

[RETURN TO MAIN INDEX](#)

# PARTS LIST FOR

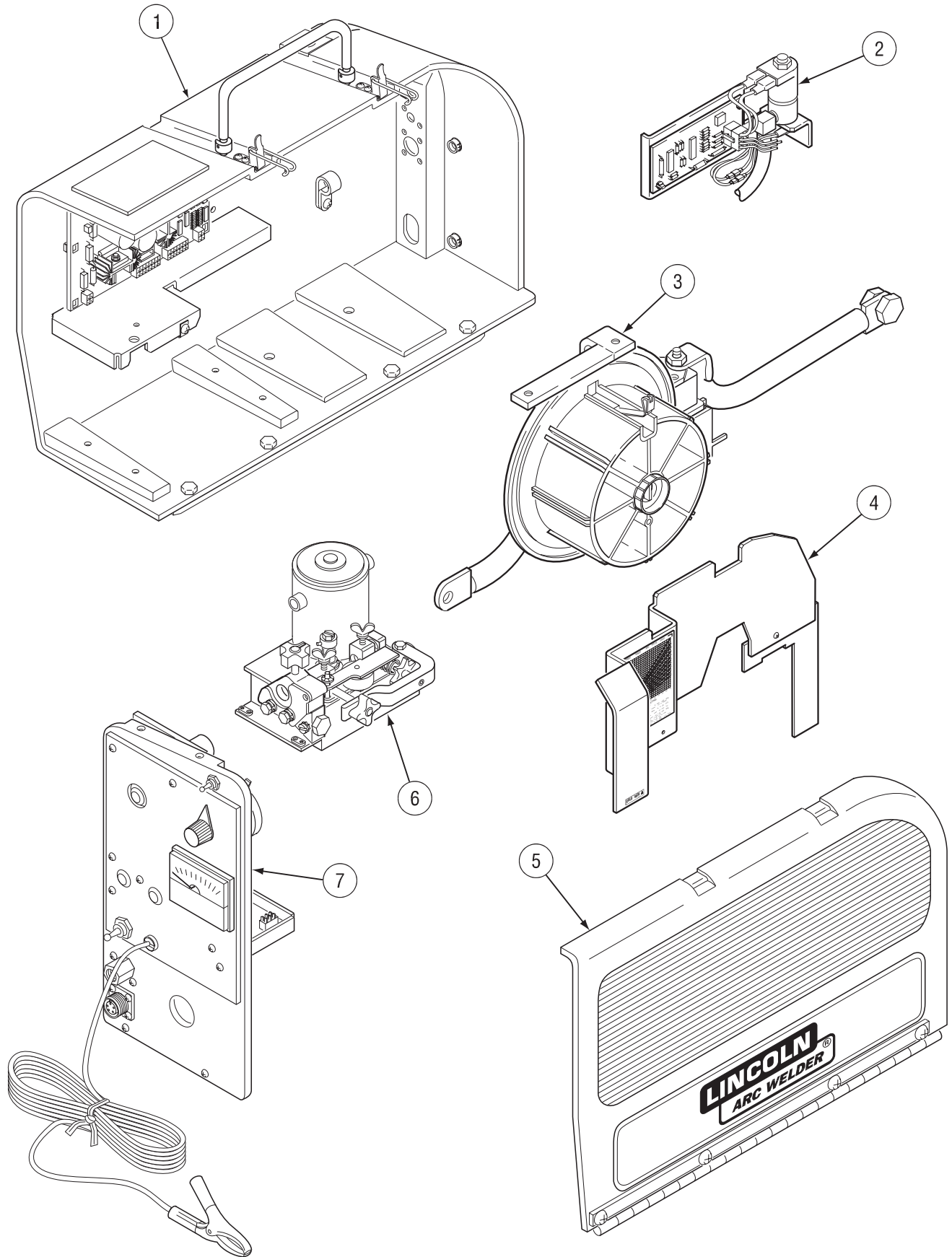
# Wire Feeder LN-25

Index of Sub Assemblies  
Illustration of Sub Assemblies  
Index of Sub Assemblies  
Illustration of Sub Assemblies  
Index of Sub Assemblies  
Illustration of Sub Assemblies  
Index of Sub Assemblies  
Illustration of Sub Assemblies

LN-25



# MAIN ASSEMBLY



Index of Sub Assemblies

# LN-25

## For Codes: 9157 to 10233 (See P-333 for Codes Above 10500)

Do Not use this Parts List for a machine if its code number is not listed. Contact the Service Department for any code numbers not listed.

Use the Main Assembly drawing on the left hand page and the table below to determine which sub assembly page and column the desired part is located on for your particular code machine.

Sub Assembly Item No.			1	2	2	3	4	5	6
SUB ASSEMBLY PAGE NAME	Optional Equipment	Miscellaneous Items	Case Assembly	K430 Gas Solenoid Kit	K430-1 Gas Solenoid Kit	Reel Stand Assembly	Box Cover Assembly	Case Door Assembly	Wire Drive Assembly
PAGE NO.	P-175-B.1	P-175-B.2	P-175-C	P-175-D	P-175-D.2	P-175-E	P-175-F	P-175-G	P-175-H
CODE NO.									
9157		1	1	•	•	1	1	1	1
9190		1	1	•	•	1	1	1	1
9218		1	1	•	•	1	1	1	1
9219		1	2	1	•	1	1	2	1
9220		1	3	1	•	2	2	2	2
9383		1	4	•	•	1	1	2	1
9810		1	5	•	•	1	1	3	1
9811		1	6	2	•	1	1	3	1
9812		1	7	2	•	2	2	3	2
10148		2	8	•	•	1	1	4	3
10149		2	9	•	1	1	1	4	4
10150		3	10	•	1	3	2	4	3
10231		2	8	•	•	1	1	4	3
10232		2	9	•	1	1	1	4	4
10233		3	10	•	1	3	2	4	3

Illustration of Sub Assemblies

# LN-25

## For Codes: 9157 to 10233 (See P-333 for Codes Above 10500)

Do Not use this Parts List for a machine if its code number is not listed. Contact the Service Department for any code numbers not listed.

Use the Main Assembly drawing on the left hand page and the table below to determine which sub assembly page and column the desired part is located on for your particular code machine.

Sub Assembly Item No.	7								
	Case Front Panel Assembly	(K431) Remote Output Control Module	(K431-1) Remote Output Control Module	42 V Remote Control Module	(K432) Remote Control Cable	(K439) Remote Cable Ext (50')	(K433) Power Source Remote Box		
SUB ASSEMBLY PAGE NAME									
PAGE NO.	P-175-I	P-175-J	P-175-K	P-175-L	P-175-M	P-175-N	P-175-O		
CODE NO.									
9157	1	1	•	1	1	1	1		
9190	1	1	•	1	1	1	1		
9218	1	1	1	1	1	1	1		
9219	2	1	1	1	1	1	1		
9220	3	1	1	1	1	1	1		
9383	4	1	1	1	1	1	1		
9810	5	1	1	1	1	1	1		
9811	6	1	1	1	1	1	1		
9812	7	1	1	1	1	1	1		
10148	8	1	1	1	1	1	1		
10149	9	1	1	1	1	1	1		
10150	10	1	1	1	1	1	1		
10231	8	1	1	1	1	1	1		
10232	9	1	1	1	1	1	1		
10233	10	1	1	1	1	1	1		

Illustration of Sub Assemblies

# NOTES

---

Index of Sub Assemblies

Index of Sub Assemblies

Index of Sub Assemblies

Index of Sub Assemblies

LN-25



# OPTIONAL EQUIPMENT LISTING

Miscellaneous Options Available for your machine are listed below:

# Indicates a change this printing.

DESCRIPTION .....	PART NUMBER
Contactors Kit .....	K443-1
Voltmeter Kit .....	K429
Gas Flow Timer Kit .....	K434-1
Remote Output Control Kit .....	K431-1
115 VAC Power Source Remote Box .....	K433
Remote Control Cable Assembly .....	K432
Remote Extension Cable Assembly .....	K439
42V Remote Output Control Module .....	K624-1
Remote Control Cable Assemblies .....	K625, K626, K627
Pulse Power Adapter Kit .....	K460-1
Pulse Power Cable Assembly .....	K461
Remote Voltage Control Kit (with Terminal Strip) .....	K444
Remote Voltage Control Kit (with 6 Pin Amphenol Connector) .....	K444-1
Remote Voltage Control Kit (with 14 Pin Amphenol Connector) .....	K444-2
Spindle Adapter for 14 lb Coils .....	K435
Spindle Adapter for 8" O.D. Spools .....	K468
Rear Handle Kit (Codes 9383 and above) .....	K577-1

Index of Sub Assemblies

**MISCELLANEOUS ITEMS**  
(THESE ITEMS ARE NOT ILLUSTRATED)

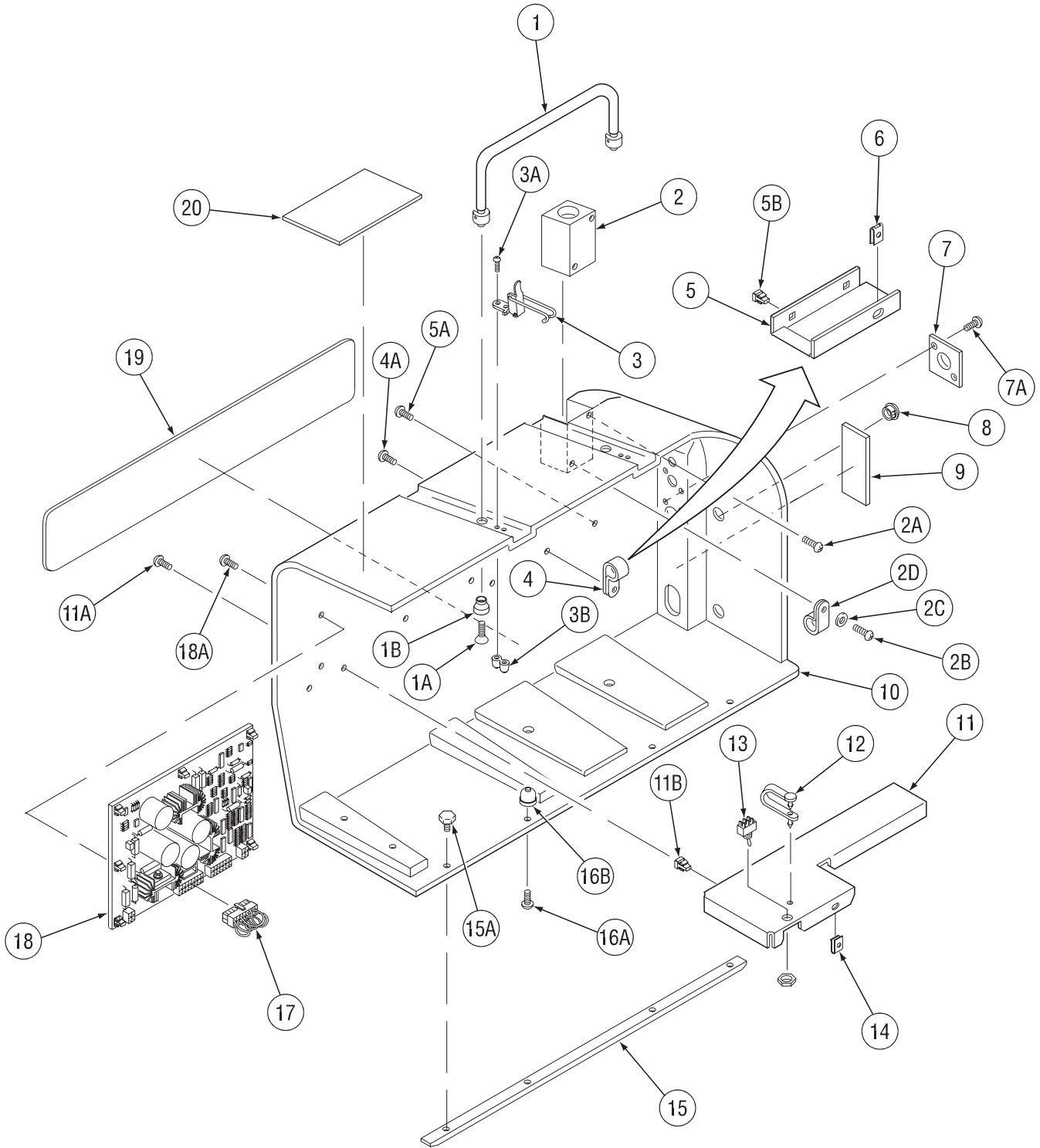
# Indicates a change this printing.

Use only the parts marked "x" in the column under the heading number called for in the model index page.

ITEM	DESCRIPTION	PART NO.	QTY.	1	2	3	4	5	6	7	8	9	10	11	12
1	Receptacle & Lead Assembly, Includes: Toggle Switch Potentiometer	S14165-398	1	x	•	•									
		T13381-6	2	X	•	•									
		T10812-92	1	X	•	•									
2	Plug & Lead Assembly, Includes: Toggle Switch Potentiometer	M17597	1	•	X	X									
		T13381-6	2	•	X	X									
		T10812-92	1	•	X	X									
3	Plug & Lead Assembly	S18250-368	1	•	•	X									

Index of Sub Assemblies

# Case Assembly



Index of Sub Assemblies

Part Numbers

Index of Sub Assemblies

Part Numbers

Index of Sub Assemblies

Part Numbers

Index of Sub Assemblies

Part Numbers



# Indicates a change this printing.

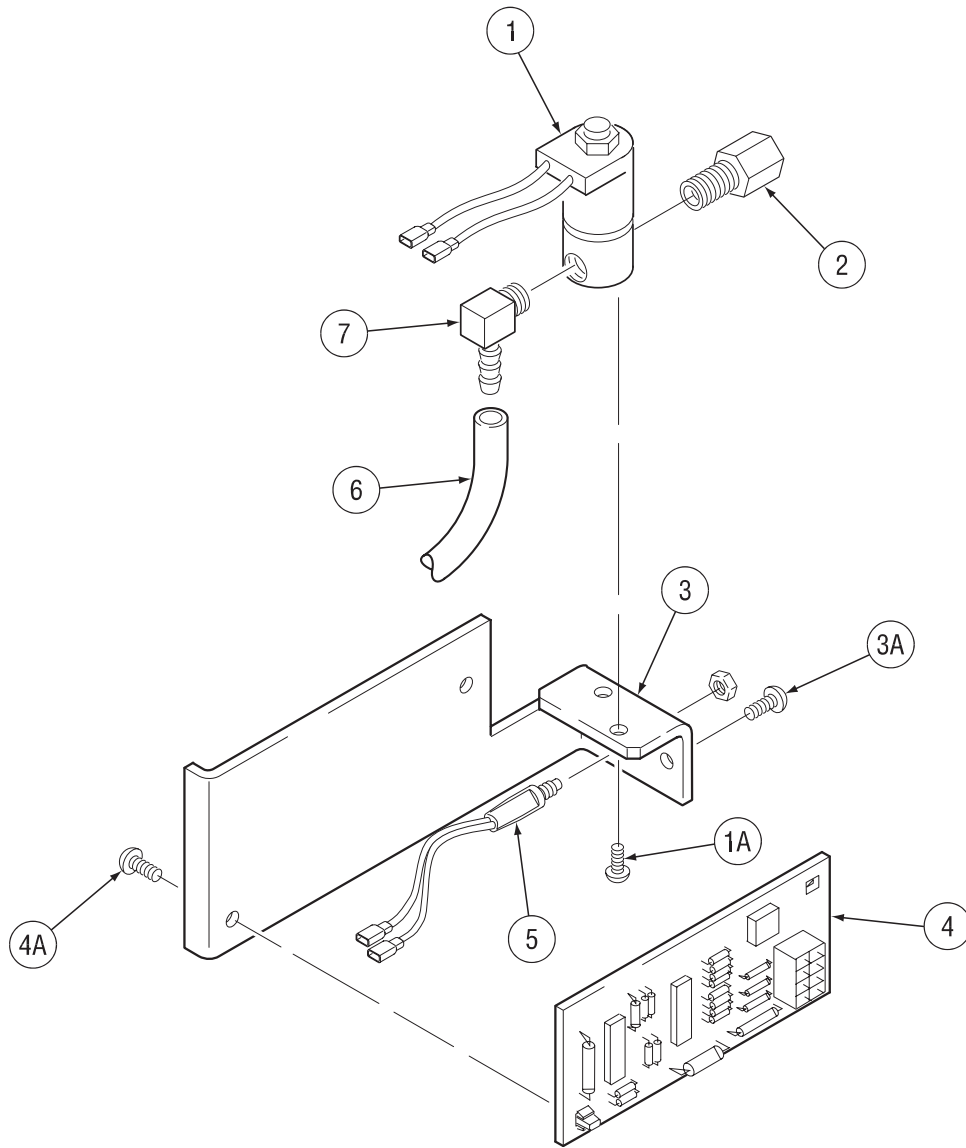
Use only the parts marked "x" in the column under the heading number called for in the model index page.

ITEM	DESCRIPTION	PART NO.	QTY.	1	2	3	4	5	6	7	8	9	10	11	12
1	Handle Assembly	S18170	1	X	X	X	X	X	X	X	X	X	X		
1A	1/4-20 x .50 FHS	CF000321	2	X	X	X	X	X	X	X	X	X	X		
1B	Handle Insulator	T15104	2	X	X	X	X	X	X	X	X	X	X		
2	Gun Holder	M15469	1	X	X	X	X	X	X	X	X	X	X		
2A	#6 x .5 Self Tapping Screw	S8025-62	1	X	X	X	X	X	X	X	X	X	X		
2B	#6 x .5 Self Tapping Screw	S8025-62	1	X	X	X	X	X	X	X	X	•	•		
2B	#6 x .75 Self Tapping Screw	S8025-82	1	•	•	•	•	•	•	•	•	X	X		
2C	Plain Washer	S9262-3	1	•	•	•	•	•	•	•	•	X	X		
2D	Lead Clamp	T12563-7	1	•	•	•	•	•	•	•	•	X	X		
3	Door Latch	S18137	2	X	X	X	X	X	X	X	X	X	X		
3A	#6 x .5 Self Tapping Screw	S8025-62	4	X	X	X	X	X	X	X	X	X	X		
3B	Insulated Latch Nut	T15090	2	X	X	X	X	X	X	X	X	X	X		
4	Lead Clamp	T8970	1	•	•	X	•	•	•	X	•	•	X		
4A	#8 x .5 Self Tapping Screw	S8025-98	1	X	X	X	X	X	X	X	X	X	X		
5	Rear Box Panel	S18144 Ø	1	X	X	•	X	X	X	•	X	X	•		
5A	#8 x .5 Self Tapping Screw	S8025-98	1	X	X	•	X	X	X	•	X	X	•		
5A	#10-24 x .375 Thread Forming Screw	S9225-61	1	•	•	•	•	•	•	X	•	•	X		
5A	#10-24 x .375 Thread Forming Screw	S9225-4	1	•	•	X	•	•	•	•	•	•	•		
5B	Expansion Nut	S14020-6	2	X	X	•	X	X	X	•	X	X	•		
6	#10-24 Speed Nut	T11525-1	1	X	X	•	X	X	X	•	X	X	•		
7	Rear Cover Plate	S18376	1	•	X	X	•	•	X	X	•	X	X		
7	Rear Cover Plate	T15100	1	X	•	•	X	X	•	•	X	•	•		
7A	#10-24 x .375 Thread Forming Screw	S9225-4	2	•	X	X	•	•	X	X	•	X	X		
7A	#10-24 x .375 Thread Forming Screw	S9225-4	4	X	•	•	X	X	•	•	X	•	•		
8	Plug Button	T10397-3	2	•	•	•	•	X	X	X	X	X	X		
9	Caution Decal	T13086-77	1	•	•	X	•	•	•	X	•	•	X		
10	Case	G2342-2	1	•	•	•	•	•	•	•	X	X	X		
10	Case (Gray)	G2342	1	•	•	•	•	X	X	X	•	•	•		
10	Case (Black)	G2342-1	1	•	•	•	•	X	X	X	•	•	•		
10	Case	G1761	1	X	X	X	X	•	•	•	•	•	•		
11	Middle Box Panel	M15230	1	X	X	X	X	X	X	X	X	X	X		
11A	#8 x .5 Self Tapping Screw	S8025-98	2	X	X	X	X	X	X	X	X	X	X		
11B	Expansion Nut	S14020-6	2	X	X	X	X	X	X	X	X	X	X		
12	Cable Hanger	T13496-2	1	•	•	•	•	•	•	•	X	X	X		
13	Toggle Switch	T13381-6	1*	X	X	X	X	X	X	X	X	X	X		
14	#10-24 Speed Nut	T11525-1	1	X	X	X	X	X	X	X	X	X	X		
15	Skid	S20195	2	•	•	•	•	X	X	X	X	X	X		
15A	Insulated Fastener	T15088	8	•	•	•	•	X	X	X	X	X	X		
16A	#6 x .375 Self Tapping Screw	S8025-73	5	•	X	X	X	•	•	•	•	•	•		
16A	#6 x .375 Self Tapping Screw	S8025-73	6	X	•	•	•	•	•	•	•	•	•		
16B	Insulation Retainer	M15335	3	X	X	X	X	•	•	•	•	•	•		
17	Jumper Plug	T13498-18	1	X	X	X	X	X	X	X	•	•	•		
17	Jumper Plug	T13498-21	1	•	•	•	•	•	•	•	X	X	X		
18	Control PC Board Assembly	M19160	1*	•	•	•	•	•	•	•	X	X	X		
18	Control PC Board Assembly	G1757-[ ]	1*	X	X	X	X	X	X	X	•	•	•		
18A	#8 x .75 Self Tapping Screw	S8025-97	8	•	•	•	•	X	X	X	X	X	X		
18A	#8 x .75 Self Tapping Screw	S8025-71	8	X	X	X	X	•	•	•	•	•	•		
19	Logo Decal	S18241	1	X	X	X	X	X	X	X	X	X	X		
20	Warning Decal	S20601	1	X	X	X	X	X	X	X	X	X	X		

Ø This part is obsolete and no longer available.

Index of Sub Assemblies  
 Sub Assembly Illustration  
 Index of Sub Assemblies  
 Sub Assembly Illustration  
 Index of Sub Assemblies  
 Sub Assembly Illustration  
 Index of Sub Assemblies  
 Sub Assembly Illustration

# K430 Gas Solenoid Kit



Index of Sub Assemblies

Part Numbers

Index of Sub Assemblies

Part Numbers

Index of Sub Assemblies

Part Numbers

Index of Sub Assemblies

Part Numbers

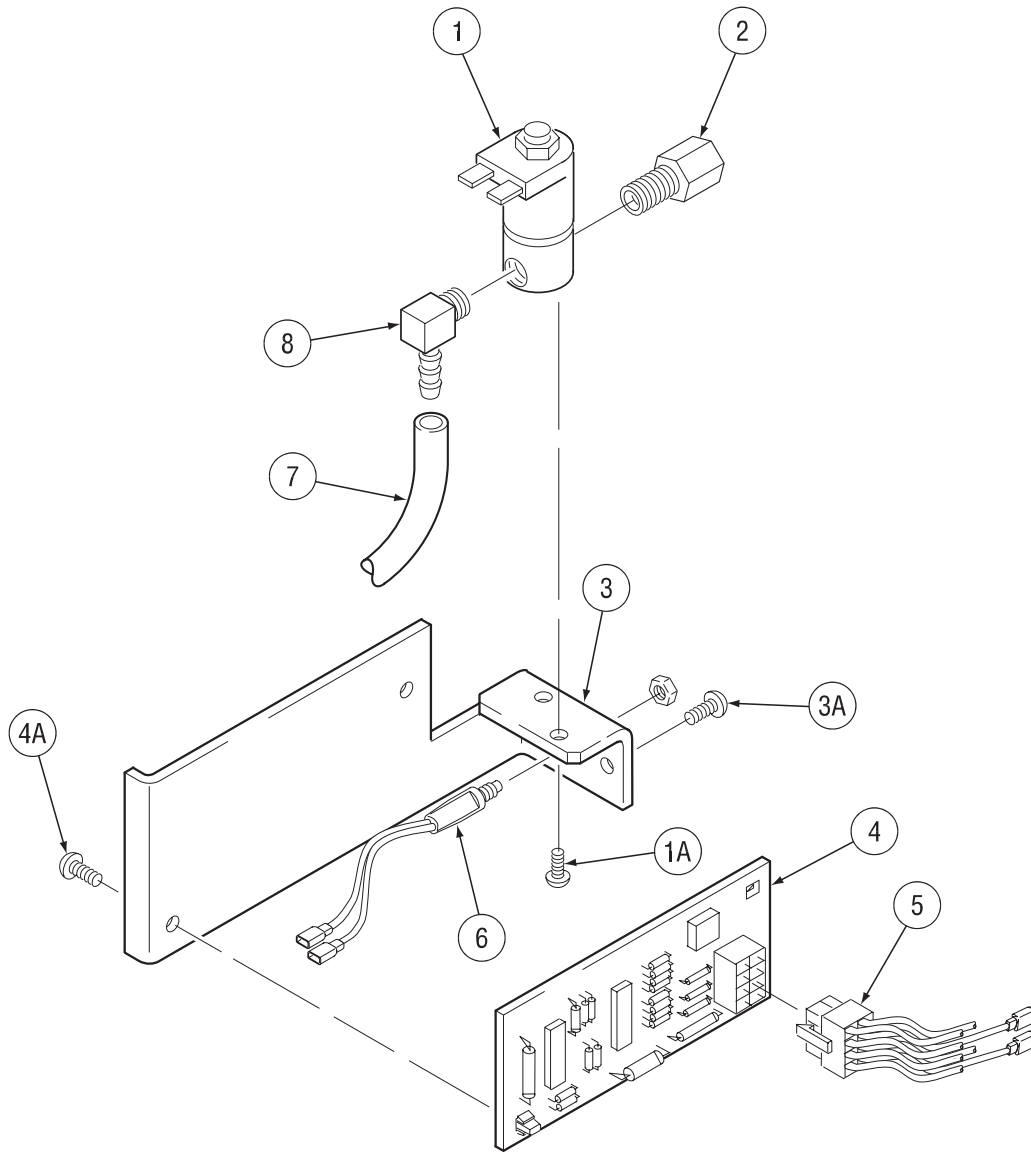
# Indicates a change this printing.

Use only the parts marked "x" in the column under the heading number called for in the model index page.

ITEM	DESCRIPTION	PART NO.	QTY.	1	2	3	4	5	6	7	8	9	10	11	12
1	Gas Solenoid & Support Asbly, Includes: (1,1A,3,&4-7)	M15231	1	X	X										
	Solenoid Valve Assembly	S18262	1*	X	X										
1A	#8-32 x .31 Sems Screw	T10082-27	2	X	X										
2	Female Connector	T11591-3	1	X	X										
3	Valve Support	M15316	1	X	X										
3A	#8 x .38 Self Tapping Screw	S8025-4	2	X	X										
4	PC Board Assembly	M15202-[ ]	1*	X	X										
4A	#8 x .76 Self Tapping Screw	S8025-71	2	X	X										
5	Purge Button Assembly	T15098	1	X	X										
6	Tubing	T10642-128	1	X	X										
7	Hose Elbow	T14557-12	1	X	X										
	<b>Items Not Illustrated</b>														
	Bulkhead Connector Asbly (Mounts to Case Front)	T15153	1	X	X										
	Hose Nipple (Mounts to Bulkhead Connector)	T15008	1	X	•										
	Inert Arc Nut (Mounts to Bulkhead Connector)	T15007-1	1	X	•										

Index of Sub Assemblies  
 Sub Assembly Illustration  
 Index of Sub Assemblies  
 Sub Assembly Illustration  
 Index of Sub Assemblies  
 Sub Assembly Illustration  
 Index of Sub Assemblies  
 Sub Assembly Illustration

# K430-1 Gas Solenoid Kit



Index of Sub Assemblies

Part Numbers

Index of Sub Assemblies

Part Numbers

Index of Sub Assemblies

Part Numbers

Index of Sub Assemblies

Part Numbers

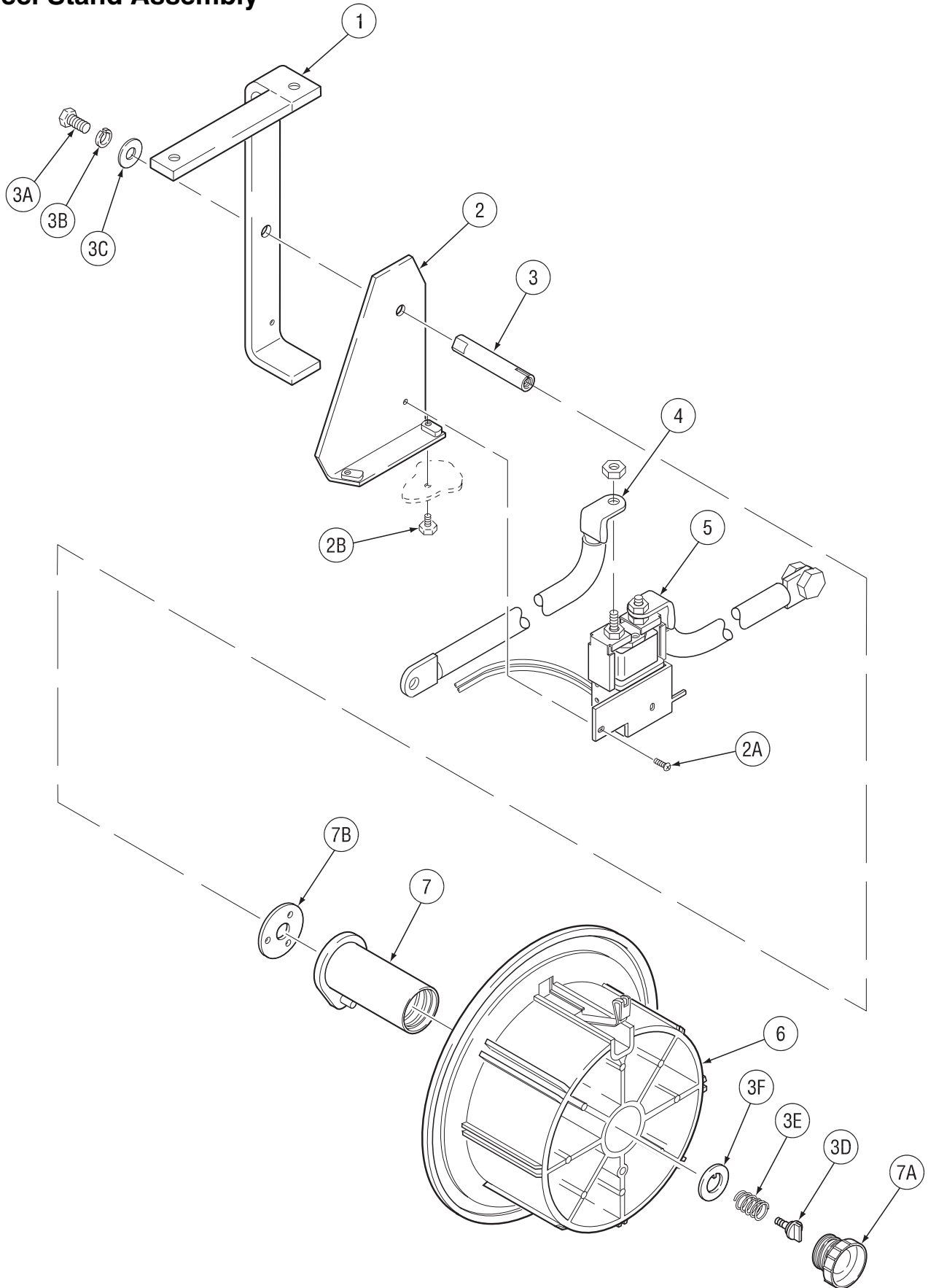
# Indicates a change this printing.

Use only the parts marked "x" in the column under the heading number called for in the model index page.

ITEM	DESCRIPTION	PART NO.	QTY.	1	2	3	4	5	6	7	8	9	10	11	12
1	Gas Solenoid & Support Asbly, Includes (1, 1A,3 & 4-7)	M17596	1	X											
	Solenoid Valve Assembly	S18262	1*	X											
1A	#8-32 x .31 Sems Screw	T10082-27	2	X											
2	Female Connector	T11591-3	1	X											
3	Valve Support	M15316	1	X											
3A	#8 x .375 Self Tapping Screw	S8025-4	2	X											
4	PC Board Assembly	M16297-[ ]	1*	X											
4A	#8 x .75 Self Tapping Screw	S8025-71	2	X											
5	Plug & Lead Assembly	S18250-366	1	X											
6	Purge Button Assembly	T15098	1	X											
7	Tubing	T10642-128	1	X											
8	Hose Elbow	T14914	1	X											
	<b>Items Not Illustrated</b>														
	Bulkhead Connector Asbly (Mounts to Case Front)	T15153	1	X											

Index of Sub Assemblies  
 Sub Assembly Illustration  
 Index of Sub Assemblies  
 Sub Assembly Illustration  
 Index of Sub Assemblies  
 Sub Assembly Illustration  
 Index of Sub Assemblies  
 Sub Assembly Illustration

# Reel Stand Assembly



LN-25

10-23-2006



Index of Sub Assemblies  
 Index of Sub Assemblies  
 Index of Sub Assemblies  
 Index of Sub Assemblies  
 Index of Sub Assemblies

Part Numbers  
 Part Numbers  
 Part Numbers  
 Part Numbers  
 Part Numbers

# Indicates a change this printing.

Use only the parts marked "x" in the column under the heading number called for in the model index page.

ITEM	DESCRIPTION	PART NO.	QTY.	1	2	3	4	5	6	7	8	9	10	11	12
1	Reel Stand Welded Assembly	M15201	1	X	X	X									
2	Reel Stand Support Assembly	T15102	1	X	X	X									
2A	#10-24 x .5 Thread Forming Screw	S9225-46	1	X	X	X									
2B	Insulated Fastener	T15088	2	X	X	X									
3	Spindle Shaft	S18138	1	X	X	X									
3A	1/2-23 x 1.5 HHCS	CF000052	1	X	X	X									
3B	Lock Washer	E106A-15	1	X	X	X									
3C	Plain Washer	S9262-14	1	X	X	X									
3D	Thumb Screw	T14813-A	1	X	X	X									
3E	Spring	T11862-14	1	X	X	X									
3F	Keyed Washer	T12965	1	X	X	X									
4	Cable Assembly	S18404	1	•	X	X									
5	Contactor Assembly & Cable	M17586	1*	•	X	X									
6	Readi-Reel Adapter	K363-P	1	X	X	X									
7	Spindle	M14560	1	X	X	X									
7A	Retaining Collar	M14587-1	1	X	X	X									
7B	Friction Washer	S17435	1	X	X	X									

Index of Sub Assemblies

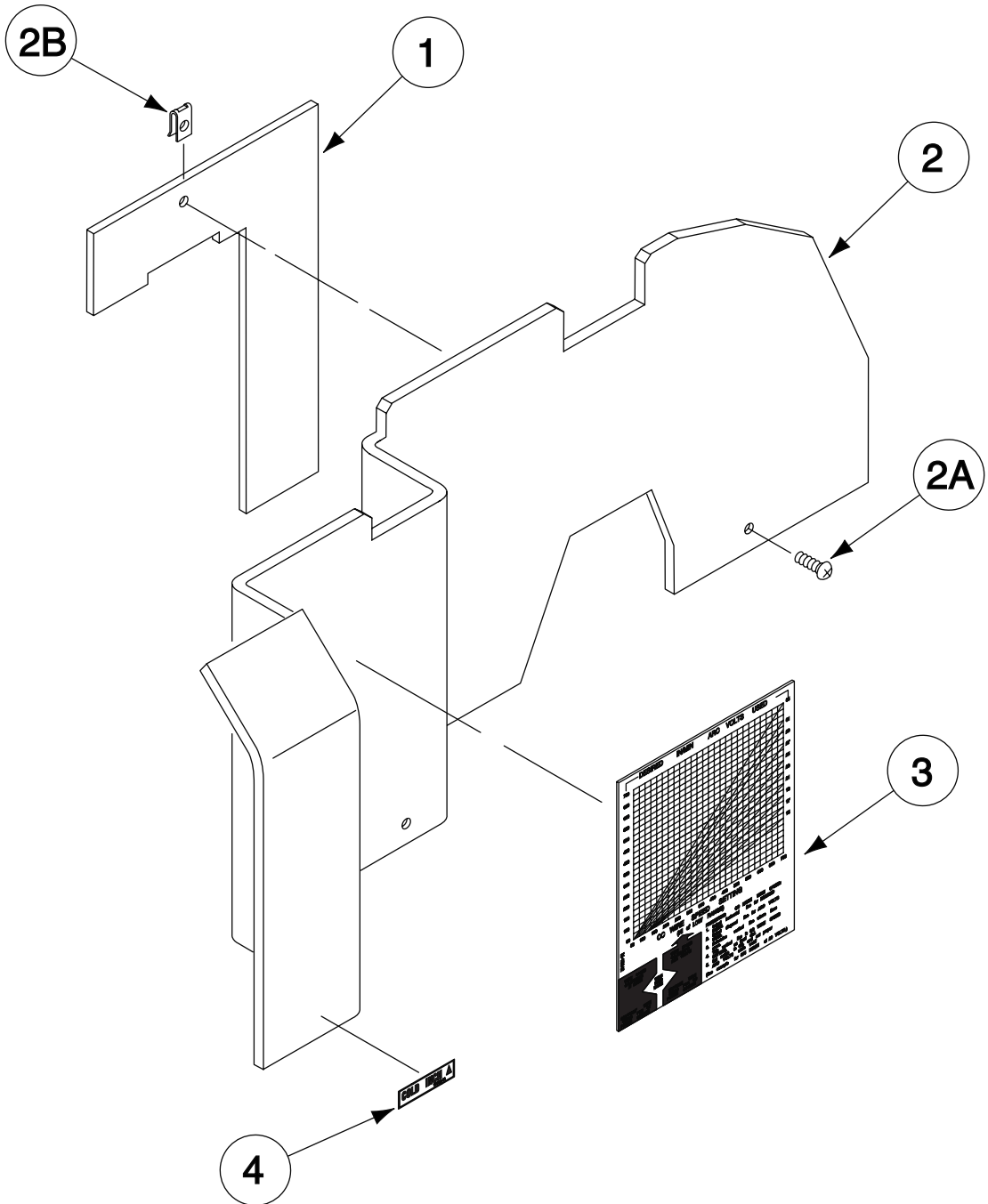
Sub Assembly Illustration

Sub Assembly Illustration

Sub Assembly Illustration

Sub Assembly Illustration

# Box Cover Assembly



Index of Sub Assemblies

Part Numbers

Index of Sub Assemblies

Part Numbers

Index of Sub Assemblies

Part Numbers

Index of Sub Assemblies

Part Numbers



# Indicates a change this printing.

Use only the parts marked "x" in the column under the heading number called for in the model index page.

ITEM	DESCRIPTION	PART NO.	QTY.	1	2	3	4	5	6	7	8	9	10	11	12
1	Baffle (Includes Speed Nut)	S18403	1	•	X										
2	Box Cover	M19854 Ø	1	X	X										
2A	#10-24 x .5 Thread Forming Screw	S9225-30	3	X	X										
2B	#10-24 Speed Nut	T11525-1	1	•	X										
3	CC Mode Decal	M15242	1	X	X										
4	Cold Inch Decal	T13086-99	1	•	X										

Ø This part is obsolete and no longer available.

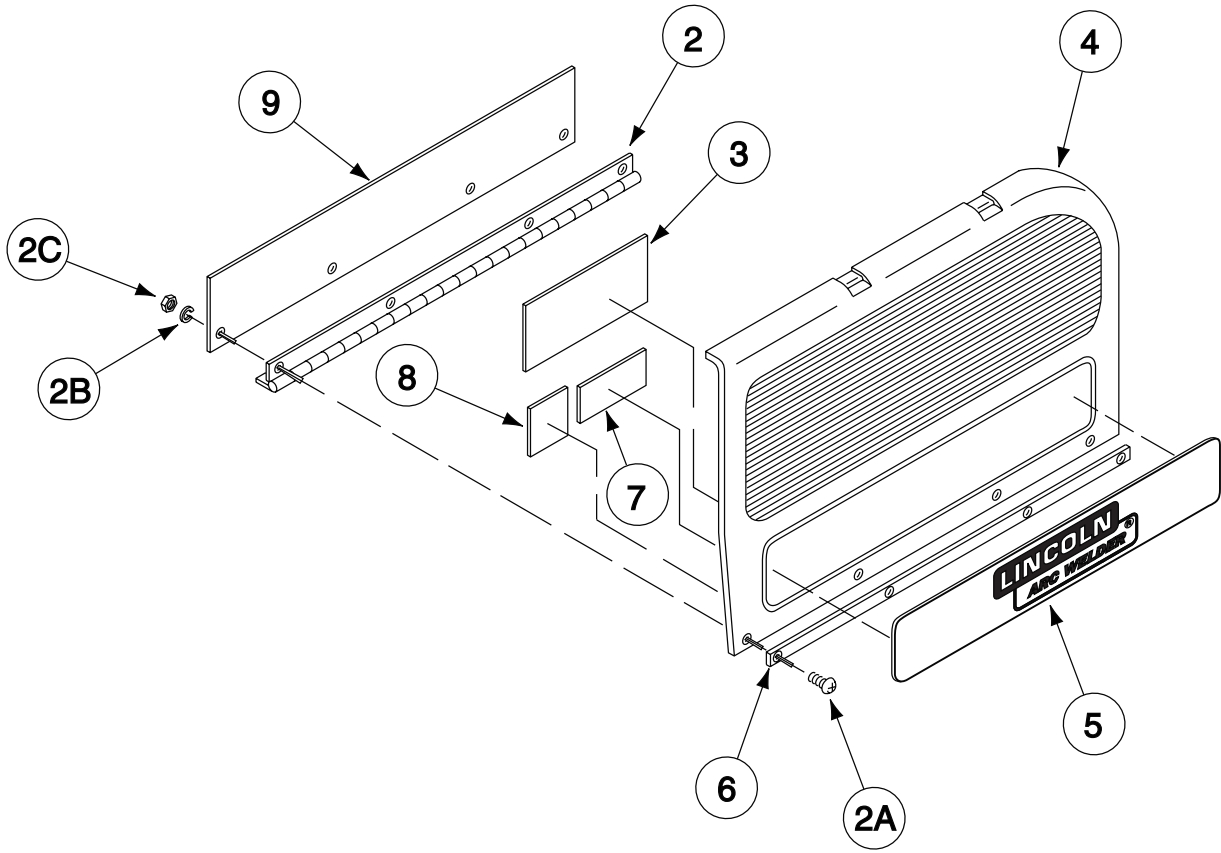
LN-25

10-23-2006



Index of Sub Assemblies  
 Sub Assembly Illustration  
 Index of Sub Assemblies  
 Sub Assembly Illustration  
 Index of Sub Assemblies  
 Sub Assembly Illustration  
 Index of Sub Assemblies  
 Sub Assembly Illustration

# Case Door Assembly



Index of Sub Assemblies

Part Numbers

Index of Sub Assemblies

Part Numbers

Index of Sub Assemblies

Part Numbers

Index of Sub Assemblies

Part Numbers

# Indicates a change this printing.

Use only the parts marked "x" in the column under the heading number called for in the model index page.

ITEM	DESCRIPTION	PART NO.	QTY.	1	2	3	4	5	6	7	8	9	10	11	12
1	Hinge Insulation	S20196	1	•	•	X	X								
1	Hinge Insulation	S18110	1	X	X	•	•								
1A	Retaining Clip (Not Shown)	M15335	3	X	X	X	X								
2	Hinge	T8755-BT	1	•	•	X	X								
2	Hinge	T8755-BH	1	X	X	•	•								
2A	#6-32 x .375 Pan Head Screw	CF000337	4	•	•	X	X								
2A	#6 x .375 Self Tapping Screw	S8025-73	5	•	X	•	•								
2A	#6 x .25 Self Tapping Screw	S8025-80	4	X	•	•	•								
2B	Lock Washer	T9695-2	4	•	•	X	X								
2C	#6-32 HN	CF000005	4	•	•	X	X								
3	Drive Roll Decal	S17973	1	X	X	X	X								
4	Case Door & Hinge Assembly	L10926	1	X	X	X	X								
5	Logo Decal	S18241	1	X	X	X	X								
6	Door Hinge Strip	S20197	1	•	•	X	X								
7	Warning Decal	T13470	1	X	X	X	X								
8	Gun Warning Decal	T13297	1	X	X	X	X								

∅ This part is obsolete and no longer available.

LN-25

10-23-2006



Index of Sub Assemblies  
 Sub Assembly Illustration  
 Index of Sub Assemblies  
 Sub Assembly Illustration  
 Index of Sub Assemblies  
 Sub Assembly Illustration  
 Index of Sub Assemblies  
 Sub Assembly Illustration

# Wire Drive Assembly

Index of Sub Assemblies

Index of Sub Assemblies

Index of Sub Assemblies

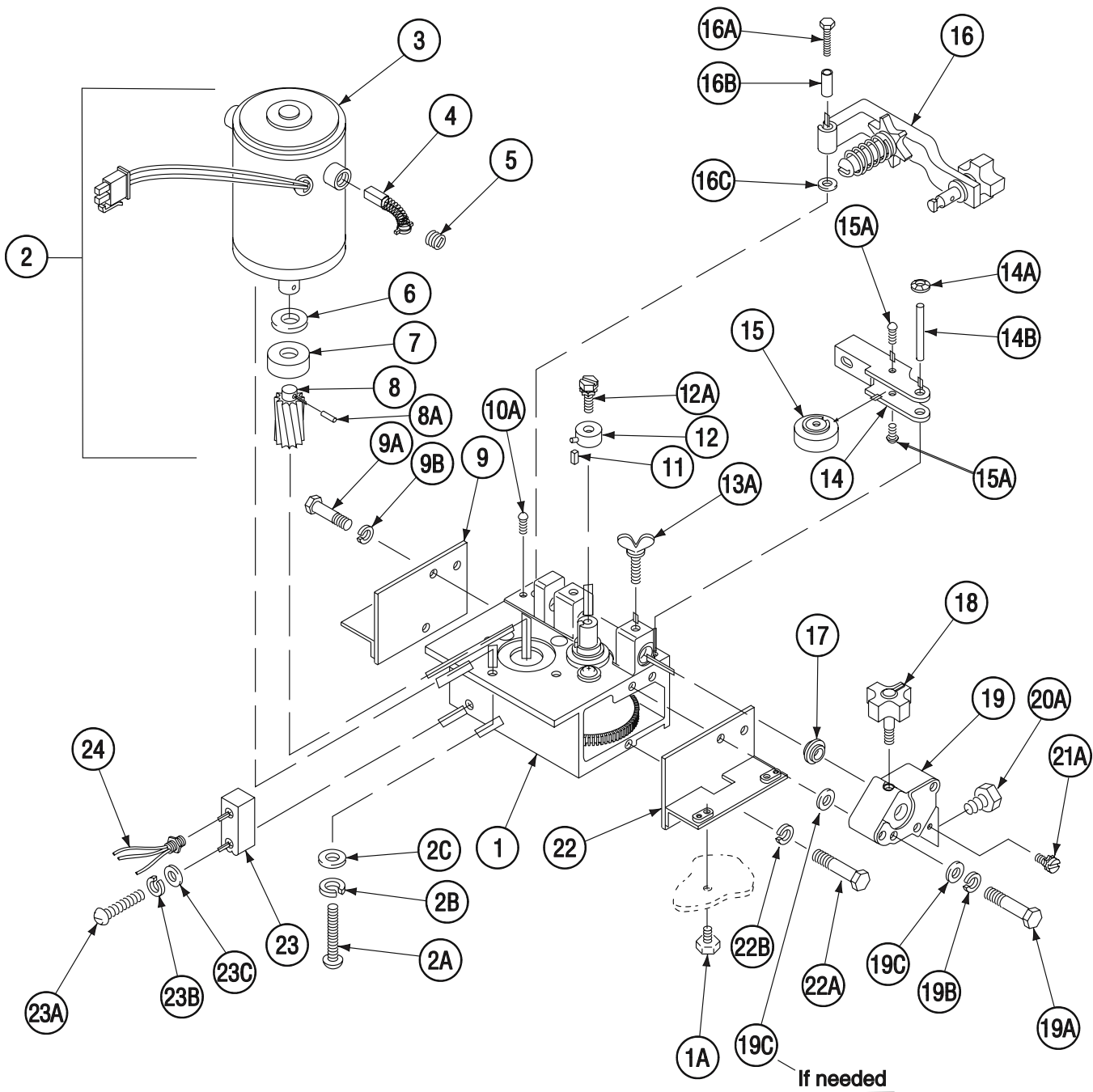
Index of Sub Assemblies

Part Numbers

Part Numbers

Part Numbers

Part Numbers



# Indicates a change this printing.

Use only the parts marked "x" in the column under the heading number called for in the model index page.

ITEM	DESCRIPTION	PART NO.	QTY.	1	2	3	4	5	6	7	8	9	10	11	12
	Wire Drive Asbly (Above Code 10200) (Includes 1, 10A, 13A-14B, & 16-20A)	L7333-3	1	•	•	X	X								
	Wire Drive Asbly (Below Code 10200) (Includes 1, 10A, 13A-14B, & 16-20A)	L7333-2	1	•	•	X	X								
	Wire Drive Asbly (Includes 1, 10A, 13A-14B, & 16-20A)	L7333	1	X	X	•	•								
1	Motor & Gearbox Asbly (Above Code 10200) (Includes 2-2C, 9-9B, & 22-24)	L7332-3	1	•	•	X	X								
1	Motor & Gearbox Asbly (Below Code 10200) (Includes 2-2C, 9-9B, & 22-24)	L7332-2	1	•	•	X	X								
1	Motor & Gearbox Asbly (Includes items 2-2C, 9-9B, & 22-24)	L7332-1 Ø	1	X	X	•	•								
1A	Insulated Fastener	T15088	4	X	X	X	X								
2	Drive Motor Asbly, Includes: 3-8A	M15078-4	1*	•	•	X	X								
2	Drive Motor Asbly, Includes: 3-8A	M15078-2	1*	X	X	•	•								
2A	#10-24 x .5 RHS	CF000047	3	X	X	X	X								
2B	Lock Washer	E106A-1	3	X	X	X	X								
2C	Plain Washer	S9262-27	3	X	X	X	X								
3	Drive Motor	<b>NSS</b>	1*	X	X	X	X								
4	Brush & Spring Asbly	M16718-F	2	X	X	X	X								
5	Brush Cap	M14907-G	2	X	X	X	X								
6	Plain Washer	S9262-70	1	X	X	X	X								
7	Ring Magnet	S18011	1	X	X	X	X								
8	Pinion Gear	S17980-2	1	X	X	X	X								
8A	Roll Pin	T9967-33	1	X	X	X	X								
9	Cover & Flange Asbly	S18119	1	X	X	X	X								
9A	1/4-20 x .5 HHCS	CF000012	2	X	X	X	X								
9B	Lock Washer	E106A-2	2	X	X	X	X								
10A	Self Tapping Screw	S8025-19	1	X	X	X	X								
11	Key (Below Code 10200)	M8776-82	1	X	X	X	X								
12	Collar Asbly (Below Code 10200)	T12341	1	X	X	X	X								
12	Collar Asbly (Above Code 10200)	S21193	1	X	X	X	X								
12A	Sems Screw	T10082-26	1	X	X	X	X								
13A	Thumb Screw	T15046	2	X	X	X	X								
14	Idle Roll Asbly, Includes: (15 & 15A)	S16666-1	1	X	X	X	X								
14A	Speed Clip	T10982-7	1	X	X	X	X								
14B	Groove Pin	T10580-9	1	X	X	X	X								
15	Bearing & Shaft Asbly	T13244	1	X	X	X	X								
15A	Drive Screw	S8025-19	2	X	X	X	X								
16	Quick Release Asbly	M15023-1	1	X	X	X	X								
16A	1/4-20 x 1.25 HHCS	CF000069	1	X	X	X	X								
16B	Pivot Spacer	S10918-7	1	X	X	X	X								
16C	Plain Washer	S9262-103	1	X	X	X	X								
17	Locator Bushing	T14031	1	X	X	X	X								
18	Molded Hand Screw	T13858	1	X	X	X	X								
19	Conductor Block	M13972-2	1	X	X	X	X								
19A	1/4-20 x 1.75 HHCS	CF000016	2	X	X	X	X								
19B	Lock Washer	E106A-2	2	X	X	X	X								
19C	Plain Washer	S9262-23	As Req'd	X	X	X	X								
20A	1/2-13 x .75 HHCS	CF000020	1	X	X	X	X								

NSS - Not Sold Separately

LN-25

10-23-2006

Ø This part is obsolete and no longer available.



Index of Sub Assemblies  
Sub Assembly Illustration  
Index of Sub Assemblies  
Sub Assembly Illustration  
Index of Sub Assemblies  
Sub Assembly Illustration  
Index of Sub Assemblies  
Sub Assembly Illustration

# Indicates a change this printing.

Use only the parts marked "x" in the column under the heading number called for in the model index page.

ITEM	DESCRIPTION	PART NO.	QTY.	1	2	3	4	5	6	7	8	9	10	11	12
21A	Sems Screw	T10082-4	1	X	•	X	•								
22	Cover & Flange Asbly	S18118	1	X	X	X	X								
22A	1/4-20 x .5 HHCS	CF000012	1	X	X	X	X								
22B	Lock Washer	E106A-2	1	X	X	X	X								
23	Switch Housing Mounting Asbly	S21227	1	X	X	X	X								
23A	#10-24 x 1.00 RHS	CF000038	1	X	X	X	X								
23B	Lock Washer	E106A-1	1	X	X	X	X								
23C	Plain Washer	S9262-27	1	X	X	X	X								
24	Hall Effect Switch Assembly	S21419	1*	•	•	X	X								
24	Hall Effect Switch Assembly	S18160-1	1*	X	X	•	•								

Index of Sub Assemblies  
 Sub Assembly Illustration  
 Index of Sub Assemblies  
 Sub Assembly Illustration  
 Index of Sub Assemblies  
 Sub Assembly Illustration  
 Index of Sub Assemblies  
 Sub Assembly Illustration

# Indicates a change this printing.

Use only the parts marked "x" in the column under the heading number called for in the model index page.

**KP653 DRIVE ROLL KITS\***

Drive Roll Kit #	Wire Size & Type	Spacer	INCLUDED WITH KIT		
			Incoming Guide	Outgoing Guide	Outgoing Guide Insert
KP653-025S	.023-.025" Solid	T14984	KP2139-1	KP2125-1	KP2124-1
KP653-030S	.030" Solid	T14984	KP2139-1	KP2125-1	KP2124-1
KP653-035C	.035" Cored	-----	KP2139-3	KP2125-1	KP2124-1
KP653-035S	.035" Solid	T14984	KP2139-3	KP2125-1	KP2124-1
KP653-052C	.045-.052" Cored	-----	KP2139-3	KP2125-1	KP2124-3
KP653-052S	.045-.052" Solid	T14984	KP2139-3	KP2125-1	KP2124-3
KP653-1/16	1/16" Cored & Solid	-----	KP2139-5	KP2125-3	KP2124-5
KP653-3/32C	.068-3/32" Cored	-----	KP2139-8	KP2125-5	KP2124-8
KP653-7/64H	7/64" Cored	-----	KP2139-8	KP2125-4	KP2124-7
KP653-120C	.120" Cored	-----	KP2139-7	KP2125-4	KP2124-7

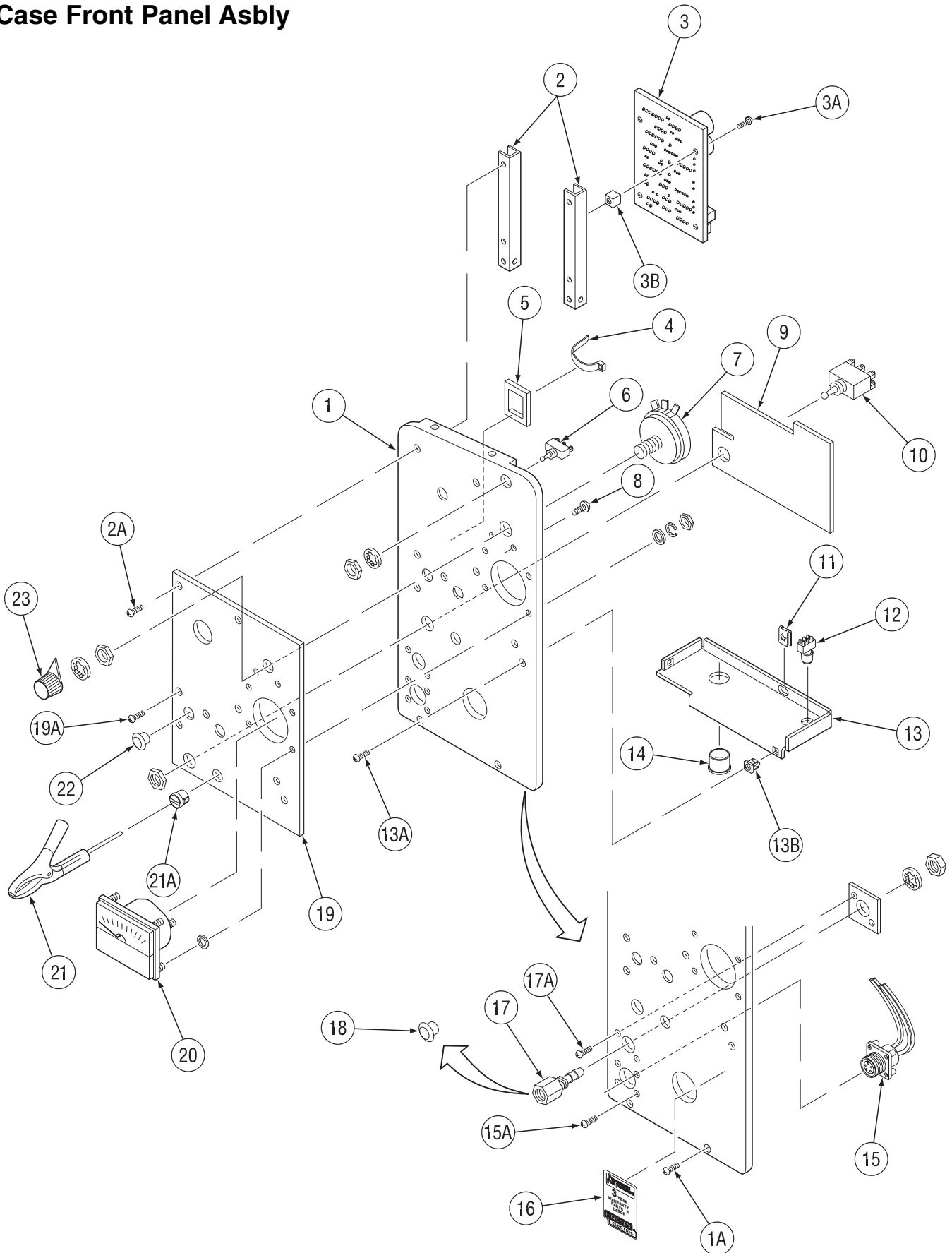
**KP654 DRIVE ROLL KITS\***

Drive Roll Kit #	Wire Size & Type	Spacer	INCLUDED WITH KIT		
			Incoming Guide	Outgoing Guide	Outgoing Guide Insert
KP654-035A	.035" Aluminum	T14984	KP2139-1	KP2125-1	KP2124-1
KP654-3/64A	3/64" Aluminum	T14984	KP2139-3	KP1999-1	KP2124-1
KP654-1/16A	1/16" Aluminum	T14984	KP2139-5	KP2125-3	KP2124-5

\* Drive Rolls Not Sold Separately

Index of Sub Assemblies

# Case Front Panel Asbly



Index of Sub Assemblies

Part Numbers

Index of Sub Assemblies

Part Numbers

Index of Sub Assemblies

Part Numbers

Index of Sub Assemblies

Part Numbers



# Indicates a change this printing.

Use only the parts marked "x" in the column under the heading number called for in the model index page.

ITEM	DESCRIPTION	PART NO.	QTY.	1	2	3	4	5	6	7	8	9	10	11	12
1	Case Front Panel (Black)	L7366-1	1	X	X	X	X	X	X	X	X	X	X		
1A	Self Tapping Screw	S8025-98	6	•	•	•	•	X	X	X	X	X	X		
1A	Self Tapping Screw	S8025-83	6	X	X	X	X	•	•	•	•	•	•		
	Contactor PC BD Asbly, Includes: (2 & 3-3B)	S21415-1	1	•	•	•	•	•	•	•	•	•	X		
	Contactor PC BD Asbly, Includes: (2 & 3-3B)	S20963	1	•	•	X	•	•	•	X	•	•	•		
2	Bracket	S18406	2	•	•	X	•	•	•	X	•	•	X		
2A	#8 x .50 Self Tapping Screw	S8025-98	4	•	•	•	•	•	•	•	•	•	X		
2A	#8 x .375 Self Tapping Screw	S8025-4	4	•	•	X	•	•	•	X	•	•	•		
3	Contactor PC Board	L9670-1	1*	•	•	•	•	•	•	•	•	•	X		
3	Contactor PC Board	L9185-2	1*	•	•	X	•	•	•	X	•	•	•		
3A	Self Tapping Screw	S8025-71	4	•	•	X	•	•	•	X	•	•	X		
3B	Standoff	S14020-3	4	•	•	X	•	•	•	X	•	•	X		
4	Cable Tie	T13770-3	1	X	X	X	X	X	X	X	X	X	X		
5	Cable Tie Mount	T13941	1	X	X	X	X	X	X	X	X	X	X		
6	Toggle Switch	T13381-6	1*	X	X	X	X	X	X	X	X	X	X		
7	Potentiometer	T10812-92	1*	X	X	X	X	X	X	X	X	X	X		
8	#6 x .25 Drive Screw	S8025-8	2	X	X	X	X	X	X	X	X	X	X		
9	Polarity Switch Shield	S19736	1	•	X	X	X	X	X	X	X	X	X		
10	Toggle Switch	T10800-7	1*	X	X	X	X	X	X	X	X	X	X		
11	#10-24 Speed Nut	T11525-1	1	X	X	X	X	X	X	X	X	X	X		
12	Cold Inch Switch Asbly	S20957	1	•	•	X	•	•	•	X	•	•	X		
12	Cold Inch Switch Asbly (For Machines with L7535-[ ] Contactor PC Board)	S19888 ø	1	•	•	X	•	•	•	•	•	•	•		
13	Front Box Panel	M15219 ø	1	X	X	X	X	X	X	X	X	X	X		
13A	#8 x .50 Self Tapping Screw	S8025-98	2	•	•	•	•	x	x	x	x	x	x		
13A	#8 x .50 Self Tapping Screw	S8025-83	2	x	x	x	x	•	•	•	•	•	•		
13B	Expansion Nut	S14020-6	2	X	X	X	X	X	X	X	X	X	X		
14	Bushing	T12380-4	1	X	X	X	X	X	X	X	X	X	X		
15	Trigger Connector	S13100-174	1	•	•	•	•	•	•	•	X	X	X		
15	Trigger Connector	S13100-109	1	X	X	X	X	X	X	X	•	•	•		
15A	#6 x .375 Self Tapping Screw	S8025-73	4	X	X	X	X	X	X	X	X	X	X		
16	Warranty Decal	S22127-1	1	X	X	X	X	X	X	X	X	X	X		
17	Bulkhead Connector Asbly	T15153	1	•	X	X	•	•	X	X	•	X	X		
17A	#8 x .375 Self Tapping Screw	S8025-4	2	•	X	X	•	•	X	X	•	X	X		
17A	#10-24 x .375 Thread Forming Screw	S9225-4	2	X	•	X	X	•	•	X	•	•	•		
18	Plug Button	T10397-4	1	X	•	•	X	X	•	•	X	•	•		
19	Nameplate - LN25	M15235	1	X	X	X	X	X	X	X	X	X	X		
19A	#10-24 x .375 Thread Forming Screw	S9225-61	3	•	•	•	•	•	•	X	•	•	X		
19A	#10-24 x .375 Thread Forming Screw	S9225-61	7	•	•	•	•	X	X	•	X	X	•		
19A	#10-24 x .375 Thread Forming Screw	S9225-4	3	•	•	X	•	•	•	•	•	•	•		
19A	#10-24 x .375 Thread Forming Screw	S9225-4	7	X	X	•	X	•	•	•	•	•	•		
20	Voltmeter	T15134	1	•	X	X	X	X	X	X	X	X	X		
21	Ground Lead Asbly, Includes:	S17211-1	1	X	X	X	X	X	X	X	X	X	X		
	Ground Clamp	M19306	1	X	X	X	X	X	X	X	X	X	X		
21A	Grommet	T9274-5	1	X	X	X	X	X	X	X	X	X	X		
22	Plug Button	T10397-19	3	X	X	X	X	X	X	X	X	X	X		
23	Control Knob	S18139-2	1	X	X	X	X	X	X	X	X	X	X		
24	Front Cover Plate (Code 9157 Only)	M15239-1	1	X	•	•	•	•	•	•	•	•	•		

ø This part is obsolete and no longer available.

LN-25

10-23-2006



Index of Sub Assemblies  
Sub Assembly Illustration  
Index of Sub Assemblies  
Sub Assembly Illustration  
Index of Sub Assemblies  
Sub Assembly Illustration  
Index of Sub Assemblies  
Sub Assembly Illustration

# Indicates a change this printing.

Use only the parts marked "x" in the column under the heading number called for in the model index page.

ITEM	DESCRIPTION	PART NO.	QTY.	1	2	3	4	5	6	7	8	9	10	11	12
	Remote PC Board Assembly	M15184-1	1	X											
	Remote Connector Asbly, Includes:	S13100-108	1	X											
	Polarized Connector	S12021-36	1	X											

Index of Sub Assemblies

# Indicates a change this printing.

Use only the parts marked "x" in the column under the heading number called for in the model index page.

ITEM	DESCRIPTION	PART NO.	QTY.	1	2	3	4	5	6	7	8	9	10	11	12
	Remote PC Board w/Mtg Brackets, Includes:	S21414	1	X											
	PC Board	M16295-[ ]	1	X											
	Self Tapping Screw	S8025-98	4	X											
	Remote Connector Asbly, Includes:	M17588	1	X											
	Potentiometer	T10812-40	1	X											
	Connector (6 Pin)	S12021-36	1	X											
	Plug Housing	S18249-4	1	X											
	Insulating Washer	S10773-75	1	X											
	Potentiometer Insulation	S18396	1	X											
	Self Tapping Screw	S8025-73	4	X											
	Knob	S18139-2	1	X											
	Lead Clamp	T12563-7	1	X											
	Self Tapping Screw	S8025-82	1	X											
	Plain Washer	S9262-3	1	X											
	Plug & Lead Asbly (Blue)	S18250-316	1	X											
	Plug & Lead Asbly (Red)	S14165-446	1	X											
	Plug & Lead Asbly (White)	S18250-323	1	X											
	Jumper Plug	T13498-22	1	X											

Index of Sub Assemblies

# Indicates a change this printing.

Use only the parts marked "x" in the column under the heading number called for in the model index page.

ITEM	DESCRIPTION	PART NO.	QTY.	1	2	3	4	5	6	7	8	9	10	11	12
	Remote Control PC Bd w/Standoffs, Includes:	S20967	1	X											
	Remote Control PC Bd Assembly	L9244-[ ]	1	X											
	PC Board Mounting Bracket	S18406	2	X											
	Plastic Expansion Nut	S10420-4	4	X											
	Self Tapping Screw	S8025-14	4	X											
	Potentiometer & Connector Asbly, Includes:	M17251	1	X											
	Potentiometer	T10812-40	1	X											
	Receptacle	S18249-8	1	X											
	Insulating Washer	S10773-75	1	X											
	Potentiometer Insulation	S18396	1	X											
	Receptacle & Lead Asbly	S14165-446	1	X											
	Plug & Lead Asbly	S18250-316	1	X											
	Plug & Lead Asbly	S18250-323	1	X											
	Control Knob	S18139-2	1	X											
	Self Tapping Screw, #8 1/2" long	S8025-98	4	X											
	Self Tapping Screw, #6 3/8" long	S8025-73	1	X											
	Self Tapping Screw, #6 3/4" long	S8025-82	1	X											
	Lead Clamp	T12563-7	1	X											
	Plain Washer	S9262-3	1	X											

Index of Sub Assemblies

# K432 REMOTE CONTROL CABLE

# Indicates a change this printing.

Use only the parts marked "x" in the column under the heading number called for in the model index page.

ITEM	DESCRIPTION	PART NO.	QTY.	1	2	3	4	5	6	7	8	9	10	11	12
	Remote Cable Asbly, Includes: (Specify Length)	K432													
	Polarized Socket Connector	S12020-28	1	X											
	Polarized Pin Connector	S12020-27	1	X											
	Connector to Cable Clamp	S12024-1	2	X											



Index of Sub Assemblies

# Indicates a change this printing.

Use only the parts marked "x" in the column under the heading number called for in the model index page.

ITEM	DESCRIPTION	PART NO.	QTY.	1	2	3	4	5	6	7	8	9	10	11	12
	Remote Cable Extension, Includes:	K439													
	Polarized Socket Connector	S12023-12	1	X											
	Polarized Pin Connector	S12020-27	1	X											
	Connector to Cable Clamp	S12024-1	2	X											

Index of Sub Assemblies

# NOTES

---

LN-25



# K433 Power Source Remote Box

Index of Sub Assemblies

Part Numbers

Index of Sub Assemblies

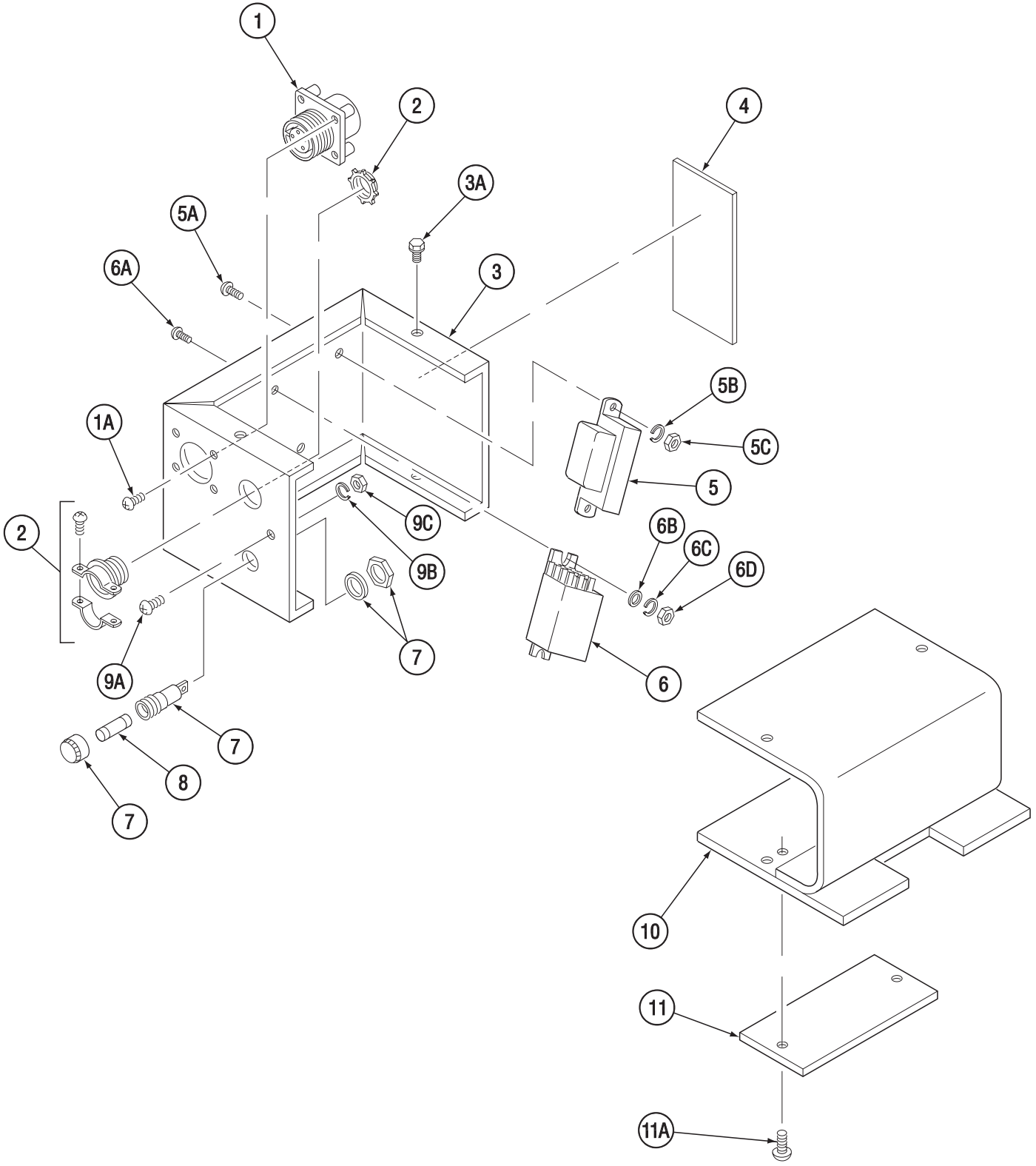
Part Numbers

Index of Sub Assemblies

Part Numbers

Index of Sub Assemblies

Part Numbers





# Indicates a change this printing.

Use only the parts marked "x" in the column under the heading number called for in the model index page.

ITEM	DESCRIPTION	PART NO.	QTY.	1	2	3	4	5	6	7	8	9	10	11	12
1	Connector	S12021-32	1	X											
1A	Self Tapping Screw	S8025-73	4	X											
2	Box Connector	T9639-2	1	X											
3	Control Box Case	L7340	1	X											
3A	Self Tapping Screw	S8025-70	4	X											
4	Warning Decal	T13470	1	X											
5	Transformer Asbly	S18128	1	X											
5A	#8-32 x .375 RHS	CF000006	2	X											
5B	Lock Washer	T4291-A	2	X											
5C	#8-32 HN	CF000042	2	X											
6	Relay	S14293-6	1	X											
6A	#6-32 x .375 RHS,	CF000003	2	X											
6B	Plain Washer	S9262-3	2	X											
6C	Lock Washer	E106A-13	2	X											
6D	#6-32 HN	CF000005	2	X											
7	Fuse Holder	S10433-1	1	X											
8	Slow Blow Fuse	T10728-11	1	X											
9A	#10-24 x .50 Thread Forming Screw	S9225-30	1	X											
9B	Lock Washer	T9695-1	1	X											
9C	#10-24 HN	CF000010	2	X											
10	Control Box Base	S18130	1	X											
11	Nameplate	S16622-C	1	X											
11A	Self Tapping Screw	S8025-80	2	X											
	<b>Items Not Illustrated:</b>														
	Misc Leads & Sleeving	S18171	1	X											
	Cable Tie	T13770-3	1	X											

Index of Sub Assemblies  
 Sub Assembly Illustration  
 Index of Sub Assemblies  
 Sub Assembly Illustration  
 Index of Sub Assemblies  
 Sub Assembly Illustration  
 Index of Sub Assemblies  
 Sub Assembly Illustration

# NOTES

---

Index of Sub Assemblies

Index of Sub Assemblies

Index of Sub Assemblies

Index of Sub Assemblies

LN-25

