

# Red-D-Arc Welderrentals

When you're ready to weld.

Red-D-Arc Welderrentals is North America's leading provider of rental welding products and services, with over 60,000 units in a fleet that includes welders, welding positioners and other welding-related equipment, for almost any type of welding process and application.

## GX200 2+4 DC Welder Generator

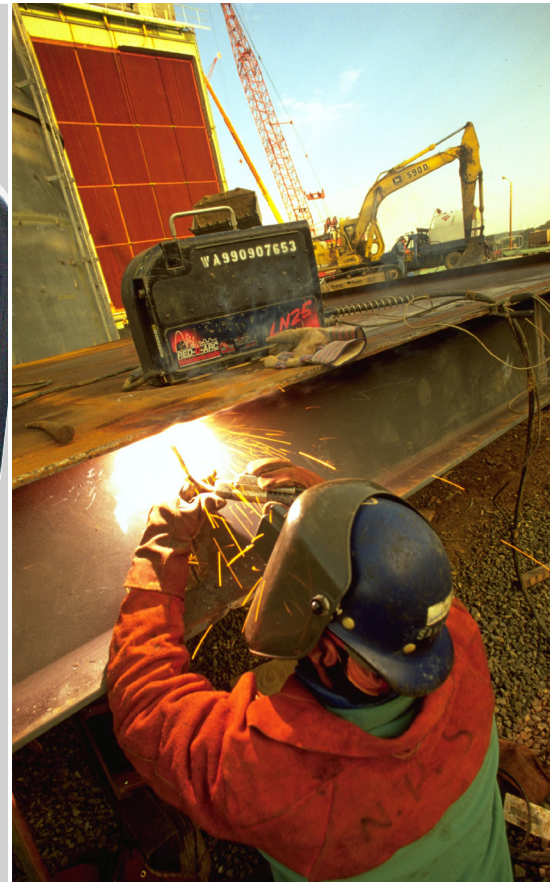


**200 AMPS DC CC WELDING**

**PULL-START AND ELECTRIC-START MODELS**

**HONDA GX390 4-STROKE ENGINE**

**4 kW 120/240 VAC AUXILIARY POWER**



**1-866-733-3272**

**Rental Centers Across North America**

## GX200 2+4 DC Welder Generator

### Processes

Stick (SMAW)

Scratch Start DC TIG (GTAW)

Aluminum MIG (GMAW) with spool guns and Flux-Cored (FCAW-SS) with voltage-sensing wirefeeders on smaller diameter wires

### Description

The GX200 2+4 is a highly portable, 200 amp at 35% duty cycle, DC stick welder with 4,000 watts 240 VAC/2,000 watts 120 VAC auxiliary electric power and comes with a Honda GX390 4-stroke gasoline engine. The asynchronous alternator delivers an exceptionally smooth welding arc with low spatter and excellent weld bead appearance. An available shop cart makes transportation around the jobsite or shop easy while occupying minimal space in the back of a pickup truck or service vehicle. Perfect for structural-steel erectors, roofdeck installers, overhead-door maintenance and installation crews, roadside tire and assistance services, and construction cleanup crews to name a few.

### Engine

Honda GX390 4-stroke gasoline engine, 13 HP @ 3600 RPM, self-recoil pull-start rope with automatic decompressor or optional electric start with 12 volt battery. This engine replaces the GX340 11 HP engine commencing with serial number 11628.

### Features

Patented, brushless asynchronous alternator delivers smooth welding output and increased efficiency in a maintenance free-design

Excellent welding-arc characteristics and arc-striking voltage, exceptional performance with all types of electrodes

Low/medium/high range amperage selection from three output taps provides more accurate current control

Honda OHV series engine provides easy starts, lower fuel consumption, and reduced engine noise

Transistorized magneto ignition, simple engine maintenance, low engine oil pressure shutdown system

Standard engine hourmeter

Light-weight, highly portable, comes with heavy-duty protective frame

120 volt 15 amp circuit breaker, 240 volt 15 amp circuit breaker

Pull-start and electric-start models

Uses regular, unleaded fuel

1.6 gallon (6.5 L) fuel tank, 1.16 qts (1.1 L) oil capacity

### Options

Electric start

Shop-type undercarriage available

### Specifications

<b>DC WELDING OUTPUT</b>	40 - 200 A DC constant current	
	200 A, 23 V @ 35% duty cycle	
	170 A, 23 V @ 60% duty cycle	
<b>AUXILIARY POWER</b>	4,000 watts, 60 Hz, 100% duty cycle on 240 VAC, circuit breaker protected	
	2,000 watts, 60 Hz, 100% duty cycle on 120 VAC, circuit breaker protected	
<b>AUXILIARY OUTLETS</b>	one 120/240 VAC single receptacle	
	one 120 VAC duplex receptacle	
<b>ENGINE</b>	Honda GX340 4-stroke, 11 HP at 3,600 RPM	
	<b>PULL START MODEL</b>	<b>ELECTRIC START MODEL</b>
<b>WEIGHT</b>	219 lb (99.3 kg)	230 lb (104.3 kg)
<b>HEIGHT</b>	20" (508 mm)	20" (508 mm)
<b>WIDTH</b>	19.25" (489 mm)	19.75" (502 mm)
<b>LENGTH</b>	30.5" (775 mm)	32.25" (819 mm)

