

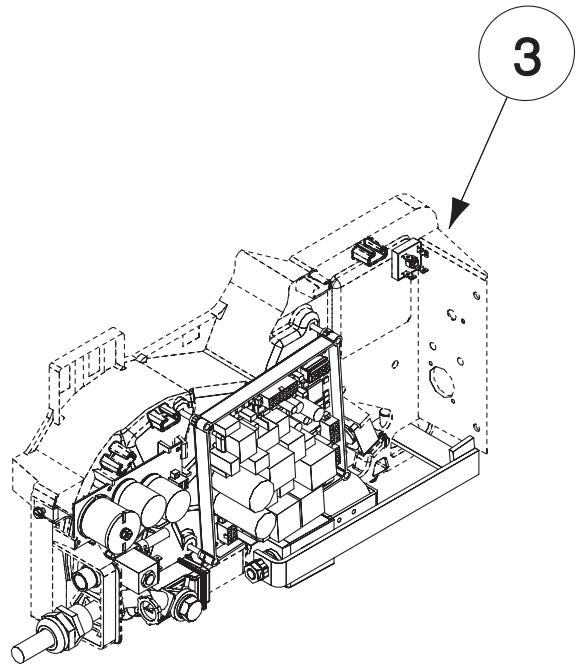
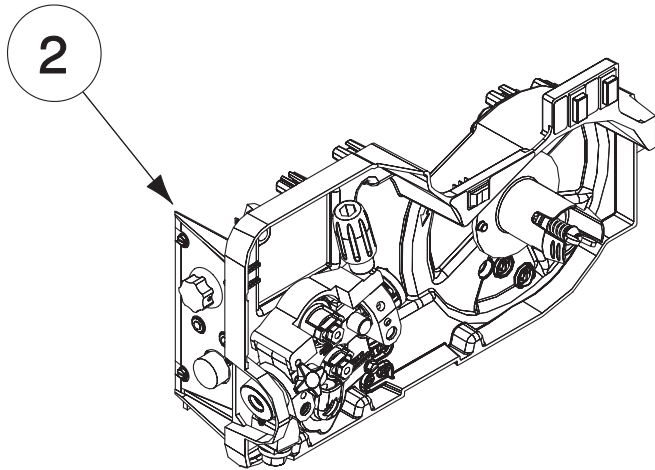
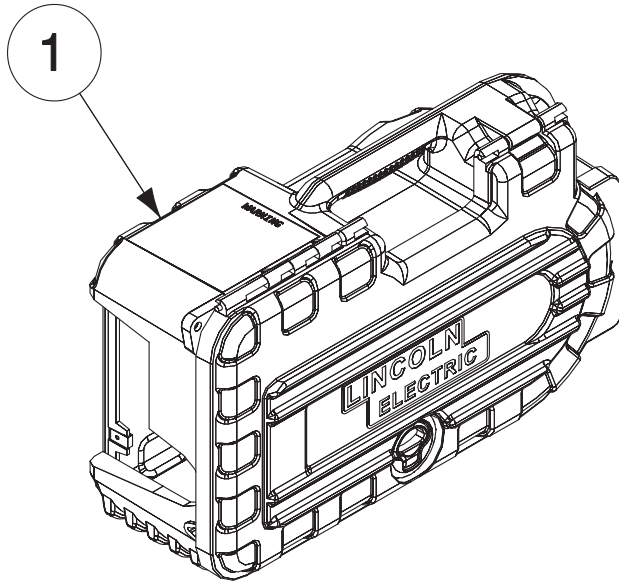
PARTS LIST FOR

ACTIV8™

Index of Sub Assemblies
Illustration of Sub Assemblies
Index of Sub Assemblies
Illustration of Sub Assemblies
Index of Sub Assemblies
Illustration of Sub Assemblies
Index of Sub Assemblies
Illustration of Sub Assemblies



ILLUSTRATION OF SUB-ASSEMBLIES



Index of Sub Assemblies

ACTIV8™

For Code: 11770, 12198

Do Not use this Parts List for a machine if its code number is not listed. Contact the Service Department for any code numbers not listed.

Use the Illustration of Sub-Assemblies page and the table below to determine which sub assembly page and column the desired part is located on for your particular code machine.

Sub Assembly Item No.		1	2	3						
	SUB ASSEMBLY PAGE NAME	Miscellaneous Items	Plastic Case Assembly	Wire Drive Assembly, Spindle & Miscellaneous	P.C. Boards, Fan & Contactor Assembly					
PAGE NO.	P-677-B.1	P-677-C	P-677-D	P-677-E						
CODE NO.										
11770	1	1	1	1						
12198	1	1	1	2						

Illustration of Sub Assemblies

MISCELLANEOUS ITEMS
(THESE ITEMS ARE NOT ILLUSTRATED)

Indicates a change this printing.

Use only the parts marked "x" in the column under the heading number called for in the model index page.

DESCRIPTION	PART NO.	QTY.	1	2	3	4	5	6	7	8	9
Inert Arc Nut (Brass)	T15007-1	1	X								
Hose Nipple (Brass)	T15008	1	X								
Flex Tube	T10642-325	1	X								
Installation Instructions	M22832	1	X								
Ground Lead Assembly	S17211-7	1	X								

Index of Sub Assemblies

NOTES

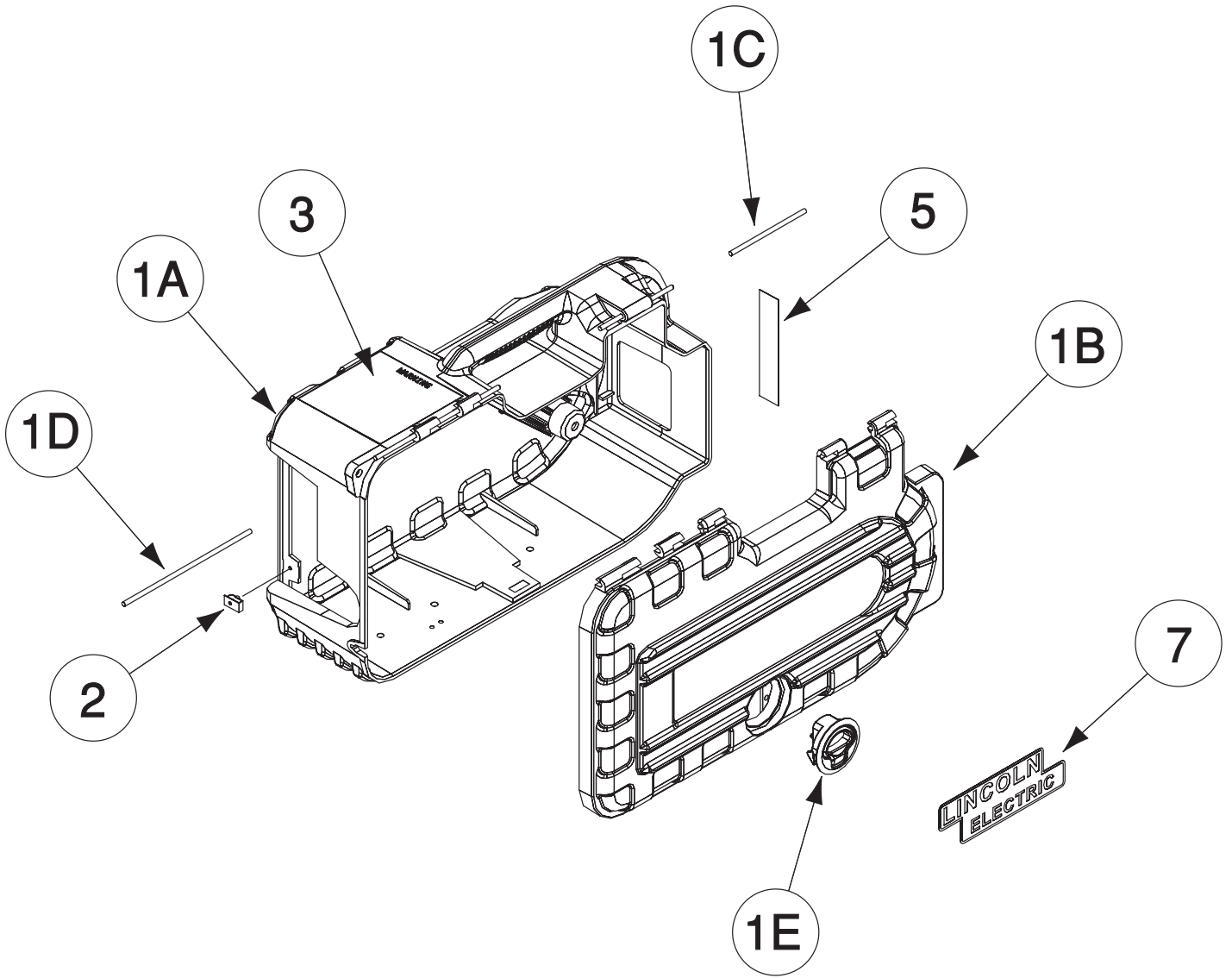
Index of Sub Assemblies

Index of Sub Assemblies

Index of Sub Assemblies

Index of Sub Assemblies

Plastic Case Assembly



Index of Sub Assemblies
Part Numbers
Index of Sub Assemblies
Part Numbers
Index of Sub Assemblies
Part Numbers
Index of Sub Assemblies
Part Numbers

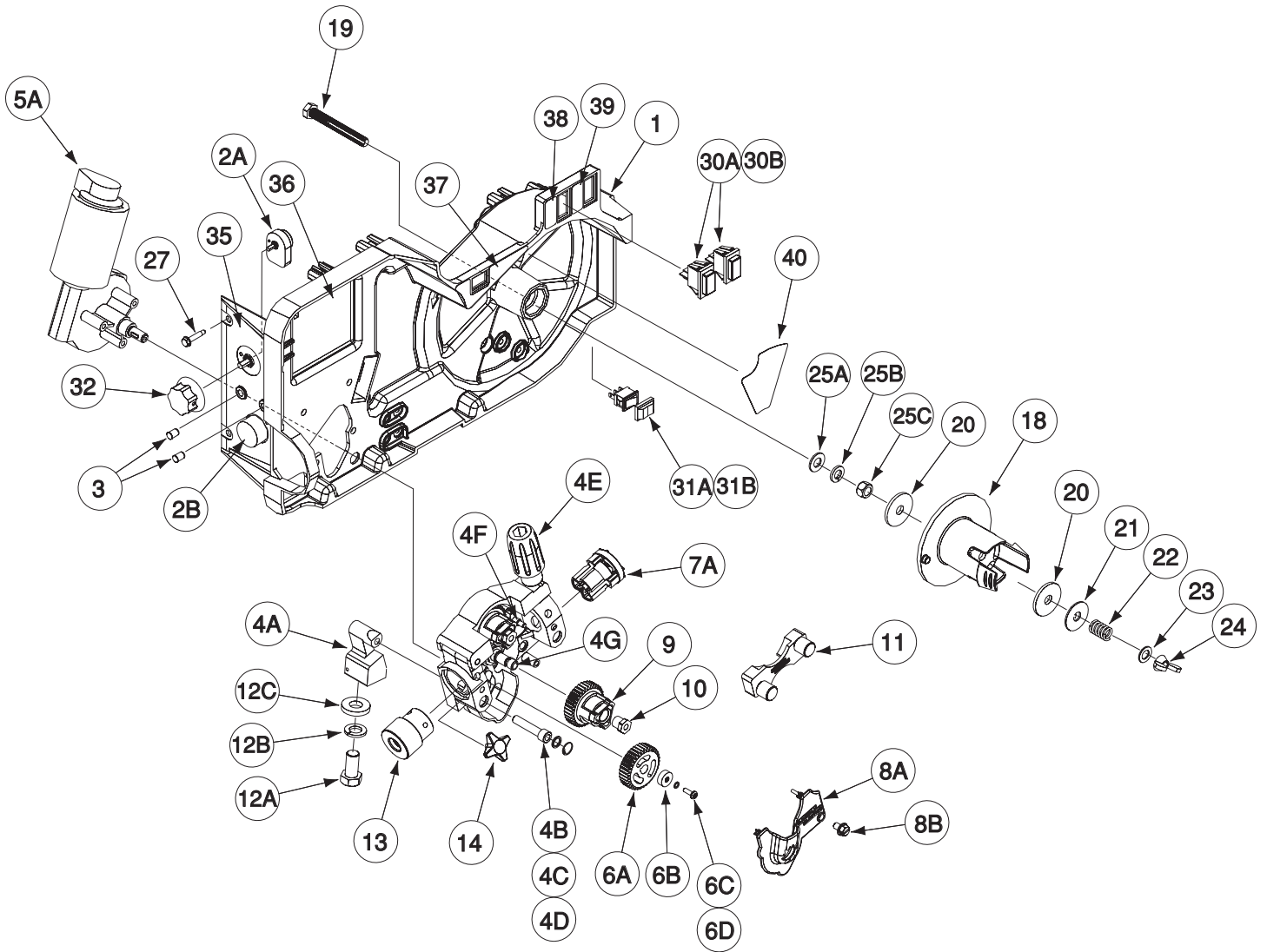
Indicates a change this printing.

Use only the parts marked "x" in the column under the heading number called for in the model index page.

ITEM	DESCRIPTION	PART NO.	QTY.	1	2	3	4	5	6	7	8	9
	Complete Plastic Case Asbly (G7039), Includes:	NSS	1	X								
	Plastic Case Asbly (G6696), Includes:	NSS	1	X								
1A	Case	NSS	1	X								
1B	Door	NSS	1	X								
1C	Hinge Pin	S26671-2	1	X								
1D	Hinge Pin	S26671-3	1	X								
1E	Door Latch	M20977-1	1	X								
1F	Metric Screw (Not Shown)	T14731-73	2	X								
2	Speed Nut	T11525-8	2	X								
3	Warning Decal	S20601-4	1	X								
4	Procedure Decal (Not Shown)	L16003	1	X								
5	Decal (Rating) (L16002-2) (Part of L16002)	NSS	1	X								
6	Decal (LECO Logo) (Not Shown) (L16002-8) (Part of L16002)	NSS	1	X								
7	Decal (Lincoln Logo) (L16002-9) (Part of L16002)	NSS	1	X								
8	Decal (Product Name) (Not Shown) (L16002-10) (Part of L16002)	NSS	1	X								
9	Decal (Product Name) (Not Shown) (L16002-11) (Part of L16002)	NSS	1	X								
10	Warning Decal (Not Shown)	S25815	1	X								
13A	Self Drilling Screw	S28933-1	3	X								#
13B	Lock Washer	E106A-1	3	X								#
13C	Plain Washer	S9262-27	3	X								#

Index of Sub Assemblies
 Sub Assembly Illustration
 Index of Sub Assemblies
 Sub Assembly Illustration
 Index of Sub Assemblies
 Sub Assembly Illustration
 Index of Sub Assemblies
 Sub Assembly Illustration

Wire Drive Assembly, Spindle & Miscellaneous



Index of Sub Assemblies

Part Numbers

Index of Sub Assemblies

Part Numbers

Index of Sub Assemblies

Part Numbers

Index of Sub Assemblies

Part Numbers

Indicates a change this printing.

Use only the parts marked "x" in the column under the heading number called for in the model index page.

ITEM	DESCRIPTION	PART NO.	QTY.	1	2	3	4	5	6	7	8
1	Wire Drive Assembly, Includes: Center Panel (Plastic)	G7040 G6695	1 1	X X							
2A	Connector & Harness Assembly, Includes:	M22646-2	1	X							
2B	Connector (5 Socket)	S12021-66	1	X							
2C	Self Tapping Screw (Not Shown)	S8025-118	2	X							
3	LED Lens (Includes S23094-1 Retaining Ring)	S23093-1	2	X							
4	Feedplate Assembly, Includes:	M19932-7	1	X							
4A	Connection Bar	M19611-1	1	X							
4B	Socket Head Cap Screw	T9447-112	1	X							
4C	Plain Washer	S9262-167	1	X							
4D	Retaining Ring	S9776-69	1	X							
4E	Adjustment Arm Assembly	M20593-3	1	X							
4F	Wire Guide Retaining Pin	S22672	2	X							
4G	Shaft	S25402	2	X							
4H	Set Screw (Not Shown)	S11604-47	1	X							
4K	Thread Forming Screw (Not Shown)	S9225-102	4	X							
5A	Motor Gearbox (with Tachometer)	L15910	1	X							
5B	Lock Washer (Not Shown)	E106A-2	3	X							
5C	M6 x1.00 PPNHS (Not Shown)	T14731-18	3	X							
6A	Drive Gear	M19870	1	X							
6B	Collar	S25414	1	X							
6C	Lock Washer	T4291-A	1	X							
6D	Metric Screw	T14731-47	1	X							
7A	Ball Bushing Assembly	M18947-1	1	X							
7B	Set Screw (Not Shown)	S11604-21	1	X							#
8A	Cover	M19999	1	X							
8B	Thread Forming Screw	S9225-102	1	X							
9	Drive Roll Shaft Assembly	S25638	2	X							
10	Retainer	S25403	2	X							
11	Wire Guide Assembly	KP2071-3	1	X							
12A	1/2-13 x 1.00 HHCS	CF000021	1	X							
12B	Lock Washer	E106A-15	1	X							
12C	Plain Washer	S9262-1	1	X							
13	Gun Adapter Assembly	S22905-2	1	X							
14	Screw Stud	T13858	1	X							
18	Spindle	L15659	1	X							
19	Spindle Bolt Rework	S28271	1	X							
20	Friction Washer	S17435-5	2	X							
21	Keyed Washer	T12965-3	2	X							
22	Compression Spring	T11862-68	1	X							
23	Plain Washer	S9262-120	1	X							
24	Wing Nut	T9968-5	1	X							
25A	Plain Washer	S9262-120	1	X							
25B	Lock Washer	E106A-16	1	X							
25C	3/8-16 HJN	CF000121	1	X							
26	Speed Nut (Not Shown)	T11525-8	1	X							
27	#10-24 x 1.00 Self Drilling Screw	S28933-1	3	X							
30A	Rocker Switch	T10800-68	2	X							
30B	Rocker Switch Boot	S28672-1	2	X							
31A	Rocker Switch	T10800-69	1	X							
31B	Rocker Switch Boot	S28672-2	1	X							

Index of Sub Assemblies
 Sub Assembly Illustration
 Index of Sub Assemblies
 Sub Assembly Illustration
 Index of Sub Assemblies
 Sub Assembly Illustration
 Index of Sub Assemblies
 Sub Assembly Illustration

Indicates a change this printing.

Use only the parts marked "x" in the column under the heading number called for in the model index page.

ITEM	DESCRIPTION	PART NO.	QTY.	1	2	3	4	5	6	7	8	9
32	Potentiometer Knob	M22778-2	1	X								
35	Decal, Nameplate (L16002-1) (Part of L16002)	NSS	1	X								
36	Decal, Pressure Arm (L16002-3) (Part of L16002)	NSS	1	X								
37	Decal, Cold Feed/Gas Purge (L16002-5) (Part of L16002)	NSS	1	X								
38	Decal, 2 Step/Trigger Interlock (L16002-6) (Part of L16002)	NSS	1	X								
39	Decal, CV/CC (L16002-7) (Part of L16002)	NSS	1	X								
40	Decal, Panel (L16002-4) (Part of L16002)	NSS	1	X								

NSS - Not Sold Separately

ACTIV8™

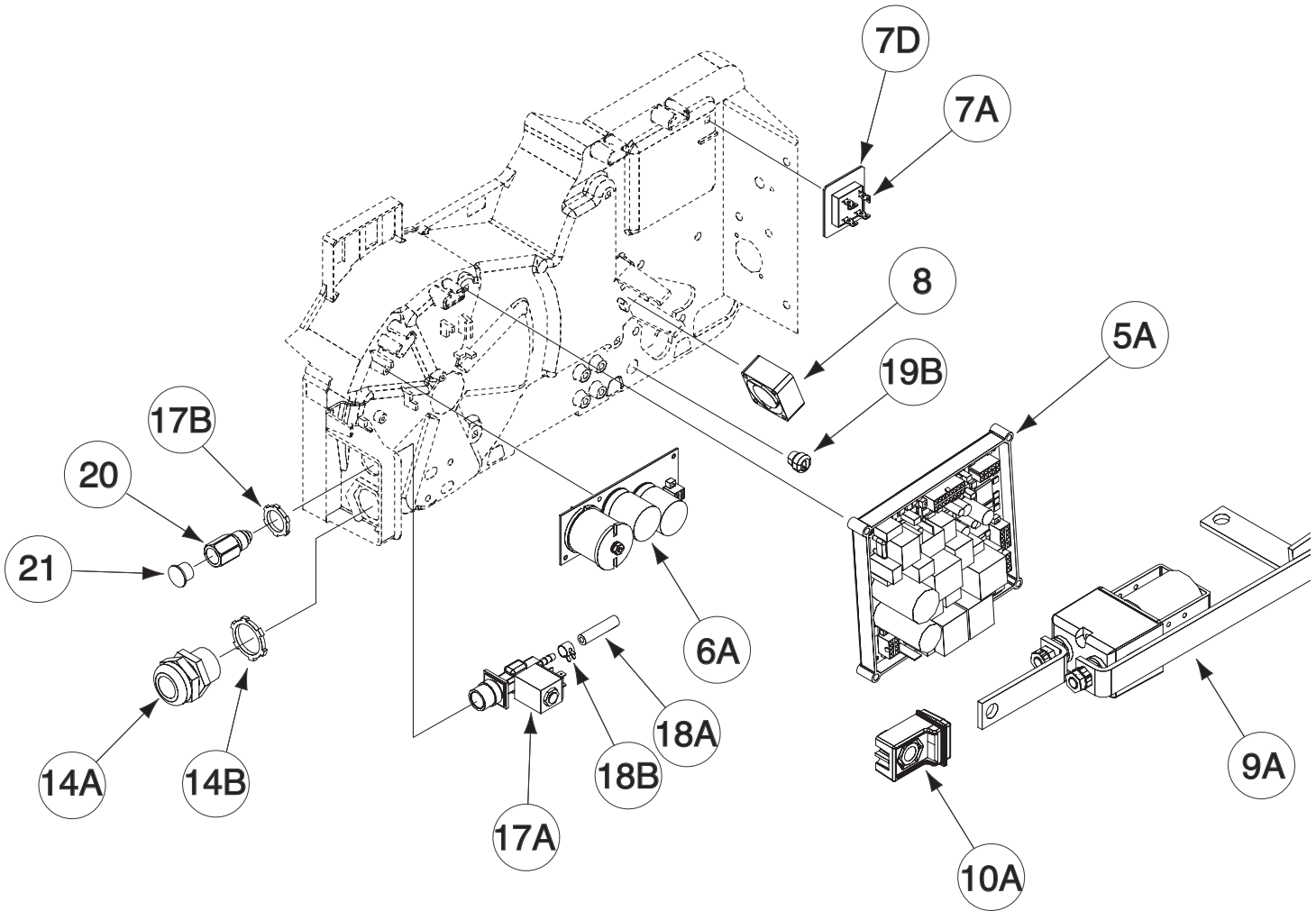
July-2014



Index of Sub Assemblies
 Sub Assembly Illustration
 Index of Sub Assemblies
 Sub Assembly Illustration
 Index of Sub Assemblies
 Sub Assembly Illustration
 Index of Sub Assemblies
 Sub Assembly Illustration

NOTES

P.C. Boards, Fan & Contactor Assembly



Index of Sub Assemblies
Part Numbers

Index of Sub Assemblies
Part Numbers

Index of Sub Assemblies
Part Numbers

Index of Sub Assemblies
Part Numbers

Indicates a change this printing.

Use only the parts marked "x" in the column under the heading number called for in the model index page.

ITEM	DESCRIPTION	PART NO.	QTY.	1	2	3	4	5	6	7	8	9
5A	Control P.C. Board	S28659-[]	1	X	X							
5B	Carriage Bolt (Not Shown)	T11827-69	4	X	X							
5C	#10-24 HN	CF000010	4	X	X							
5C	#10-24 HLN (Not Shown)	T9187-13	4	X	X							
6A	Motor Filter P.C. Board Assembly	S27506-[]	1	X	X							
6B	Self Tapping Screw (Not Shown)	S8025-118	2	X	X							
7A	Diode Bridge	T13637-5	1	X	X							
7B	Carriage Bolt (Not Shown)	T11827-49	1	X	X							
7C	#10-24 HLN (Not Shown)	T9187-13	1	X	X							
7D	Heatsink (Not Shown)	S14008-22	1	X	X							
8	Fan Assembly	S27028	1	X	X							
9A	Contacto Assembly	L15947	1	X	•							
9A	Contacto Assembly	L15947-1	1	•	X							
9B	Metric Screw (Not Shown)	T14731-73	4	X	X							
9C	Lock Washer (Not Shown)	E106A-1	4	X	X							
10A	Insulated Mounting Block	M21096	1	X	X							
10B	1/2-13 HN (Not Shown)	CF000027	1	X	X							
10C	Self Tapping Screw (Not Shown)	S9225-99	2	X	X							
11	Wiring Harness (P2, P4, P5, P6, P20, P61 & J7) (Not Shown)	G6754	1	X	X							
14A	Cord Grip Connector	S19999-5	1	X	X							
14B	Conduit Lock Nut	T14370-2	1	X	X							
17A	Solenoid Assembly	M17294-8	1	X	X							
17B	Conduit Lock Nut	T14370-1	1	X	X							
18A	Flex Tube	T10642-217	1	X	X							
18B	Hose Clamp	T13777-8	1	X	X							
19A	Toroid Assembly (Not Shown)	S22104-16	1	X	X							
19B	Grommet	T9274-5	1	X	X							
20	Shielding Gas Filter	S28863	1	X	X							
21	Hole Plug	T12250-5	1	X	X							

Note: When ordering new printed circuit boards indicate the dash number [] of the "Old" board that is to be replaced. This will aid Lincoln in supplying the correct and latest board along with any necessary jumpers or adapters. The dash number brackets [] have purposely been left blank so as to eliminate errors, confusion and updates.

Index of Sub Assemblies
 Sub Assembly Illustration
 Index of Sub Assemblies
 Sub Assembly Illustration
 Index of Sub Assemblies
 Sub Assembly Illustration
 Index of Sub Assemblies
 Sub Assembly Illustration

NOTES

Index of Sub Assemblies

Index of Sub Assemblies

Index of Sub Assemblies

Index of Sub Assemblies