

# Red-D-Arc Welderrentals

When you're ready to weld.

Red-D-Arc Welderrentals is North America's leading provider of rental welding products and services, with over 50,000 units in a fleet that includes welders, welding positioners and other welding-related equipment, for almost any type of welding process and application.

## Airman PDS185S-6C1 Air Compressor



**QUIET, HIGH-EFFICIENCY DESIGN**

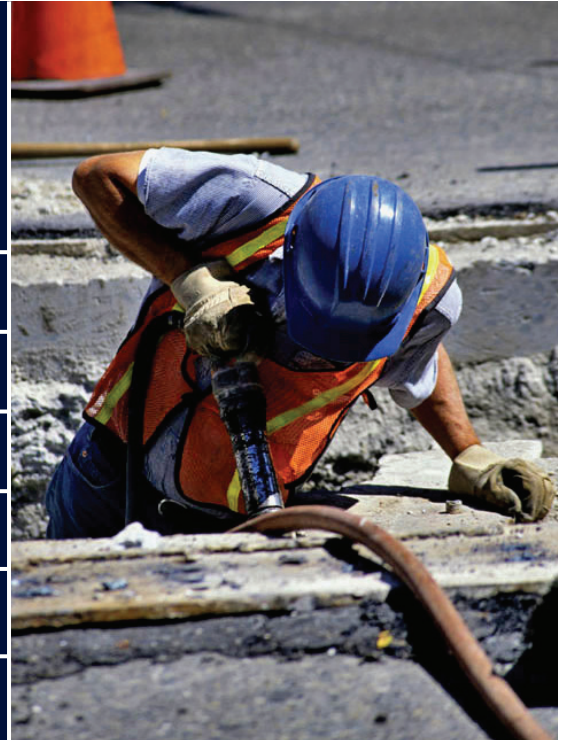
**CONVENIENT ACCESS AND STORAGE**

**DURABLE, RELIABLE CONSTRUCTION**

**TIER III AND CARB COMPLIANT**

**BEST FUEL ECONOMY IN CLASS**

**WIDER STANCE AND 14" TIRES**



**1-866-733-3272**

**Rental Centers Across North America**

## Airman PDS185S-6C1 Portable Air Compressor

### Features

The PDS185S-6C1 is one of the most advanced 185 CFM air compressors available - it's quiet, user-friendly, ruggedly dependable, already ahead of government environmental regulations, and offers the best fuel economy in its class. Additional upgraded features are included as standard equipment.

### Engine Features

The Nissan TD27 Engine carries a standard 5 year, 5000 hour Nissan warranty.

This engine is an EPA Tier III + CARB compliant internal combustion diesel engine with improved engine output providing a 13% reduction of crankshaft speed and a 20% reduction in noise (63 dBA at 23 feet when idling).

The auto idle feature increases fuel economy by 20% and further enhances the lower emissions level.

### Durable, Reliable Construction

The engine is directly coupled to the air-end by a fiber gear coupler for improved power transmission and reduced vibrations. The improved unloader valve and air pressure regulator feature O-rings instead of diaphragms.

A power-coated finish and stainless steel hardware maintain their attractive appearance.

### High-Efficiency Design

Engine idles as low as 1,300 RPM which not only increases fuel economy but also reduces component wear.

Direct-line air intake means there are no door inlets, and the rear louvers are designed to deter wind-driven rain.

Free air delivery is increased due to a step-up ratio in the air-end.

An improved cooling system allows operation at a maximum ambient temperature of 113 °F (45 °C).

Safety is enhanced with LED taillights, and a wider stance and large 14" tires for better towing stability.

Includes upgrades like full-featured gauges, a diagnostic panel, and a low fuel shutdown system.

### Service and Maintenance

An enlarged, cartridge-type fuel filter aids in cleaning the diesel fuel, reducing service time and cost.

A simplified air and oil line routing design improves serviceability and provides better access to all components.

Dual air-cleaners provide better protection of the air-end.

Side-by-side radiator and oil cooler are more efficient and easier to clean.

The engine oil and coolant drain to the outside of the machine.

The compressor oil and fuel drains are hand-operated requiring no tools.

### Convenient Access and Storage

Lockable gull-wing style doors with gas struts allow easy one-hand operation and virtually lift themselves to provide access to a larger compartment - large enough to hold 90 lb (40.8 kg) breakers, and various tools and hoses.



### Compressor

FREE AIR DELIVERY	185 CFM (5.2 m <sup>3</sup> /min)
WORKING PRESSURE	100 PSI (689 kPa)
AIR OUTLETS	3/4" X 2 (19 mm X 2)

### Operating Parameters

MAXIMUM ALTITUDE	4,921 ft (1501 m)
MAXIMUM AMBIENT TEMPERATURE	113 °F (45 °C)
MINIMUM AMBIENT TEMPERATURE	5 °F (-15 °C)
MAX INCLINE	15 degrees

### Engine

MODEL	Nissan TD27
DISPLACEMENT	162.5 cubic inches (2662.9 cm <sup>3</sup> )
HORSEPOWER (CALIFORNIA MODEL)	55 HP (49 HP)
HIGH IDLE (CALIFORNIA MODEL)	2,300 RPM (2,100 RPM)
LOW IDLE	1,250 RPM

### Weights and Dimensions

LENGTH WITHOUT TOWING FRAME	73.2" (1859 mm)
WIDTH WITHOUT TOWING FRAME	49.0" (1245 mm)
HEIGHT WITHOUT TOWING FRAME	39.3" (998 mm)
DRY WEIGHT WITHOUT TOWING FRAME	1,800 lb (816.5 kg)
WEIGHT WITHOUT TOWING FRAME	2,040 lb (925.3 kg)
LENGTH WITH TOWING FRAME	128.0" (3251 mm)
WIDTH WITH TOWING FRAME	66.0" (1676 mm)
HEIGHT WITH TOWING FRAME	55.0" (1397 mm)
DRY WEIGHT WITH TOWING FRAME	2,342 lb (1062.3 kg)
WEIGHT WITH TOWING FRAME	2,530 lb (1147.6 kg)

### Capacity

LUBRICATION SYSTEM	4.0 gallons (15.1 litres)
FUEL TANK	25 gallons (94.6 litres)
ENGINE COOLING WATER QUANTITY	2.2 gallons (8.3 litres)
ENGINE OIL	2.6 gallons (9.8 litres)