

PARTS LIST FOR

Red-D-Arc

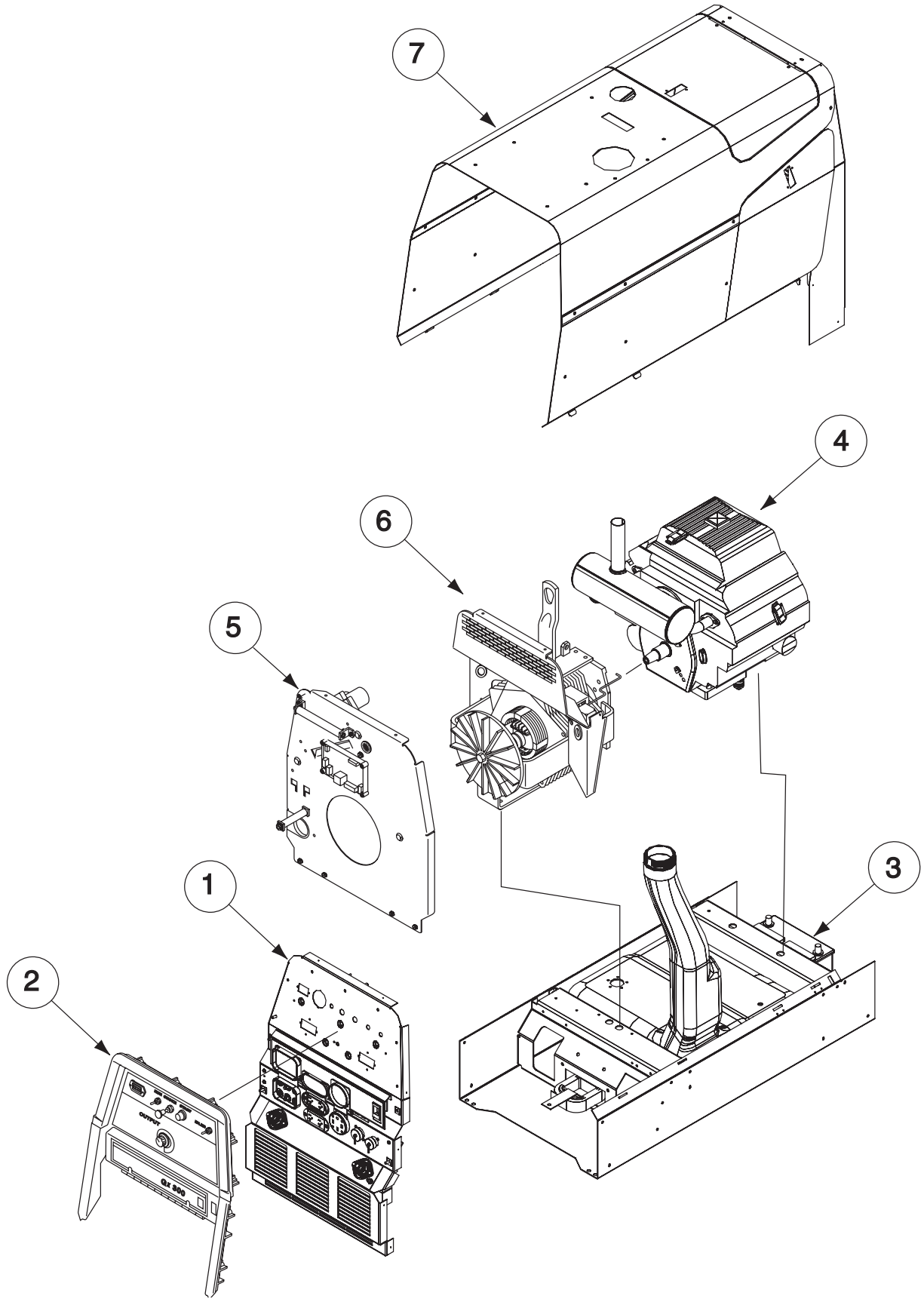
GX 300

Index of Sub Assemblies
Illustration of Sub Assemblies
Index of Sub Assemblies
Illustration of Sub Assemblies
Index of Sub Assemblies
Illustration of Sub Assemblies
Index of Sub Assemblies
Illustration of Sub Assemblies

RED-D-ARC GX 300

Red-D-Arc
Welderrentals
1-866-733-3272

ILLUSTRATION OF SUB-ASSEMBLIES



RED-D-ARC GX 300

09-21-2004

OPTIONAL EQUIPMENT LISTING

Miscellaneous Options Available for your machine are listed below:

Indicates a change this printing.

| DESCRIPTION | PART NUMBER |
|---|----------------|
| Accessory Package | Order K703 |
| Spark Arrestor | Order K1898-1 |
| Canvas Cover | Order K886-2 |
| Aux. Power Plug Kit (20 Amp) | Order K802N |
| Aux. Power Plug Kit (15 Amp) | Order K802R |
| 4-Wire Grounding Plug | Order T12513-9 |
| Undercarriage (All Terrain) | Order K1737-1 |
| Undercarriage (Factory) | Order K1770-1 |
| Cable Carrier Kit | Order K1739-1 |
| Single Cylinder Holder | Order K1745-1 |
| Small Welder Trailer, Heavy Duty | Order K957-1 |
| Rotor Pulling Kit (Available to Field Service Shops Only) | Order S20788 |
| Roll Cage | Order K1788-1 |
| Full KVA Adapter Kit | Order K1816-1 |

Index of Sub Assemblies

Indicates a change this printing.

Use only the parts marked "x" in the column under the heading number called for in the model index page.

| DESCRIPTION | PART NO. | QTY. | 1 | 2 | 3 | 4 | 5 | 6 | 7 | 8 | 9 |
|----------------------|------------|------|---|---|---|---|---|---|---|---|---|
| Harness Assembly | G4468 | 1 | X | | | | | | | | |
| Plug & Lead Assembly | M19685-3 | 1 | X | | | | | | | | |
| Plug & Lead Assembly | M19685-6 | 1 | X | | | | | | | | |
| Rotary Switch | S16670-10 | 1 | X | | | | | | | | |
| Wiring Diagram | G4570 | 1 | X | | | | | | | | |
| Plug & Lead Assembly | S18250-889 | 1 | X | | | | | | | | |

Index of Sub Assemblies

Case Front Assembly

Index of Sub Assemblies

Part Numbers

Index of Sub Assemblies

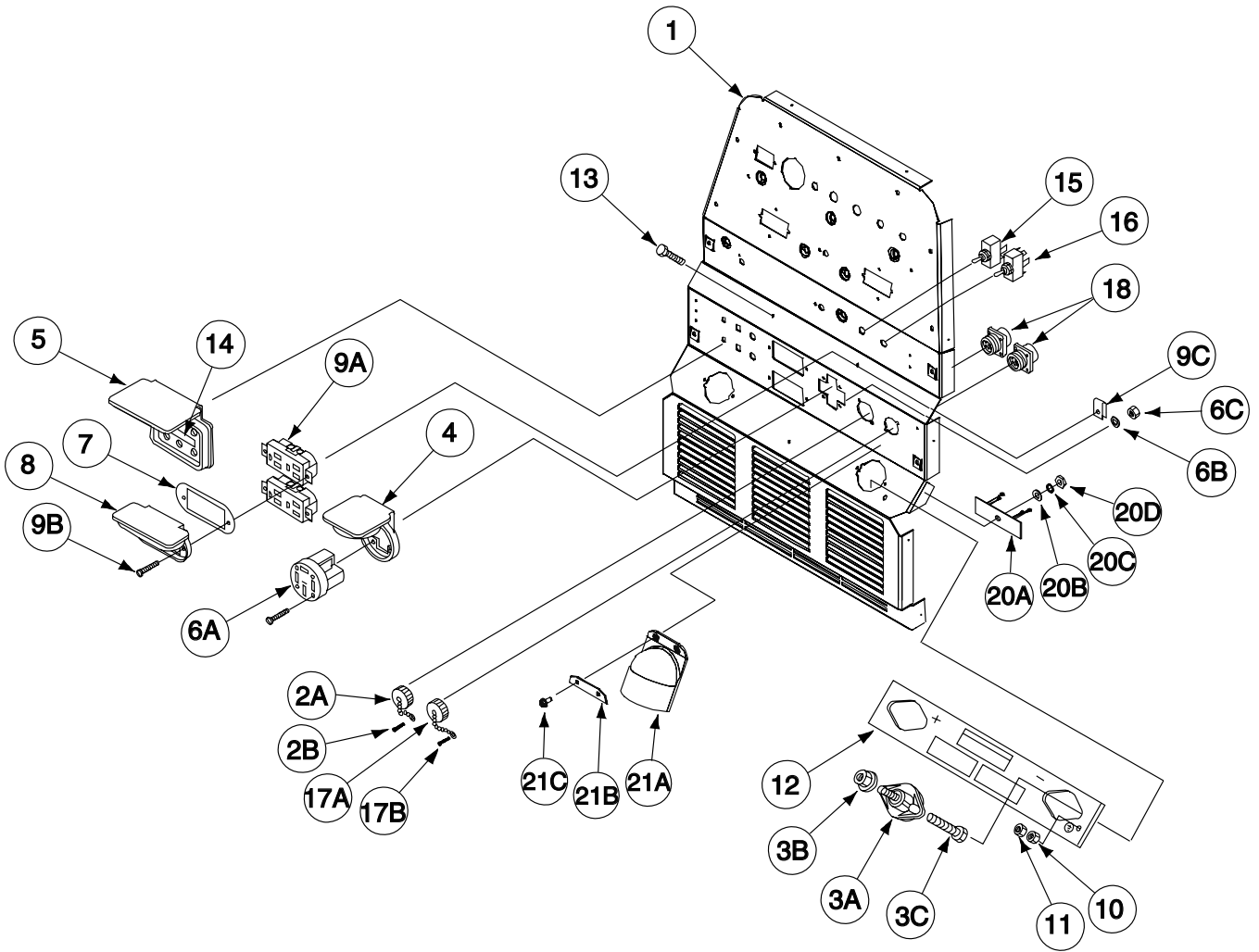
Part Numbers

Index of Sub Assemblies

Part Numbers

Index of Sub Assemblies

Part Numbers



Indicates a change this printing.

Use only the parts marked "x" in the column under the heading number called for in the model index page.

| ITEM | DESCRIPTION | PART NO. | QTY. | 1 | 2 | 3 | 4 | 5 | 6 | 7 | 8 | 9 |
|------|--|-----------|------|---|---|---|---|---|---|---|---|---|
| 1 | Case Front | G3860-5 | 1 | X | • | | | | | | | |
| 1 | Case Front | G3860-9 | 1 | • | X | | | | | | | |
| 2A | Connector Cap | S17062-3 | 1 | X | X | | | | | | | |
| 2B | Self Tapping Screw | S8025-96 | 4 | X | X | | | | | | | |
| 3A | Output Terminal Asbly, Includes: (1/2 Per Asbly) | T14166-9 | 2 | X | X | | | | | | | |
| 3B | Output Stud Nut | T3960 | 2 | X | X | | | | | | | |
| 3C | 1/2-13 x .75 HHCS | CF000344 | 2 | X | X | | | | | | | |
| 3D | Self Tapping Screw (Not Shown) | S8025-91 | 4 | X | X | | | | | | | |
| 3E | Shunt & Lead Assembly | S24097-3 | 1 | X | X | | | | | | | |
| 4 | Receptacle Cover | M18861 | 1 | X | X | | | | | | | |
| 5 | Receptacle Cover | M19161 | 1 | X | • | | | | | | | |
| 6A | Receptacle, Single | S18907-2 | 1 | X | X | | | | | | | |
| 6B | Lock Washer | T9695-3 | 4 | X | X | | | | | | | |
| 6C | #8-32 HN | CF000042 | 4 | X | X | | | | | | | |
| 7 | Receptacle, Gasket | S21088 | 2 | X | X | | | | | | | |
| 8 | Printed Cover | M16996 | 2 | X | X | | | | | | | |
| 9A | Receptacle, Duplex | S24410-1 | 2 | X | X | | | | | | | |
| 9B | Thread Forming Screw (Cutting) | S9225-63 | 4 | X | X | | | | | | | |
| 9C | Speed Nut, #10-24 | T11525-1 | 4 | X | X | | | | | | | |
| 10 | Lock Nut | T9187-1 | 1 | X | X | | | | | | | |
| 11 | 1/4-20 HN | CF000017 | 1 | X | X | | | | | | | |
| 12 | Rating Plate | L11812-5 | 1 | X | • | | | | | | | |
| 12 | Rating Plate | L12790-3 | 1 | • | X | | | | | | | |
| 13 | Self Tapping Screw | S8025-91 | 2 | X | X | | | | | | | |
| 14 | Circuit Breaker Decal | S24672-2 | 1 | X | • | | | | | | | |
| 15 | Switch, Toggle, SPST (Remotely Controlled) | T10800-38 | 1 | X | X | | | | | | | |
| 16 | Toggle Switch (Wire Feeder Voltmeter) | T10800-39 | 1 | X | X | | | | | | | |
| 17A | Connector Cap | S17062-6 | 1 | X | X | | | | | | | |
| 17B | Self Tapping Screw | S8025-96 | 4 | X | X | | | | | | | |
| 18 | Connector & Lead Assembly | M19685-6 | 1 | X | X | | | | | | | |
| 19 | By-Pass Assembly (Not Shown) | S24982 | 1 | X | X | | | | | | | |
| 20A | RF-Bypass Filter Assembly | S24982 | 1 | X | X | | | | | | | |
| 20B | Flat Washer | S9262-27 | 1 | X | X | | | | | | | |
| 20C | Lock Washer | E106A-1 | 1 | X | X | | | | | | | |
| 20D | #10-24 HN | CF000010 | 1 | X | X | | | | | | | |
| 21A | Output Stud Cover | M20007 | 2 | • | X | | | | | | | |
| 21B | Output Stud Cover Plate | S25669 | 2 | • | X | | | | | | | |
| 21C | Thread Forming Screw | S9225-68 | 4 | • | X | | | | | | | |

Index of Sub Assemblies
 Sub Assembly Illustration
 Index of Sub Assemblies
 Sub Assembly Illustration
 Index of Sub Assemblies
 Sub Assembly Illustration
 Index of Sub Assemblies
 Sub Assembly Illustration

Control Panel Assembly

Index of Sub Assemblies

Part Numbers

Index of Sub Assemblies

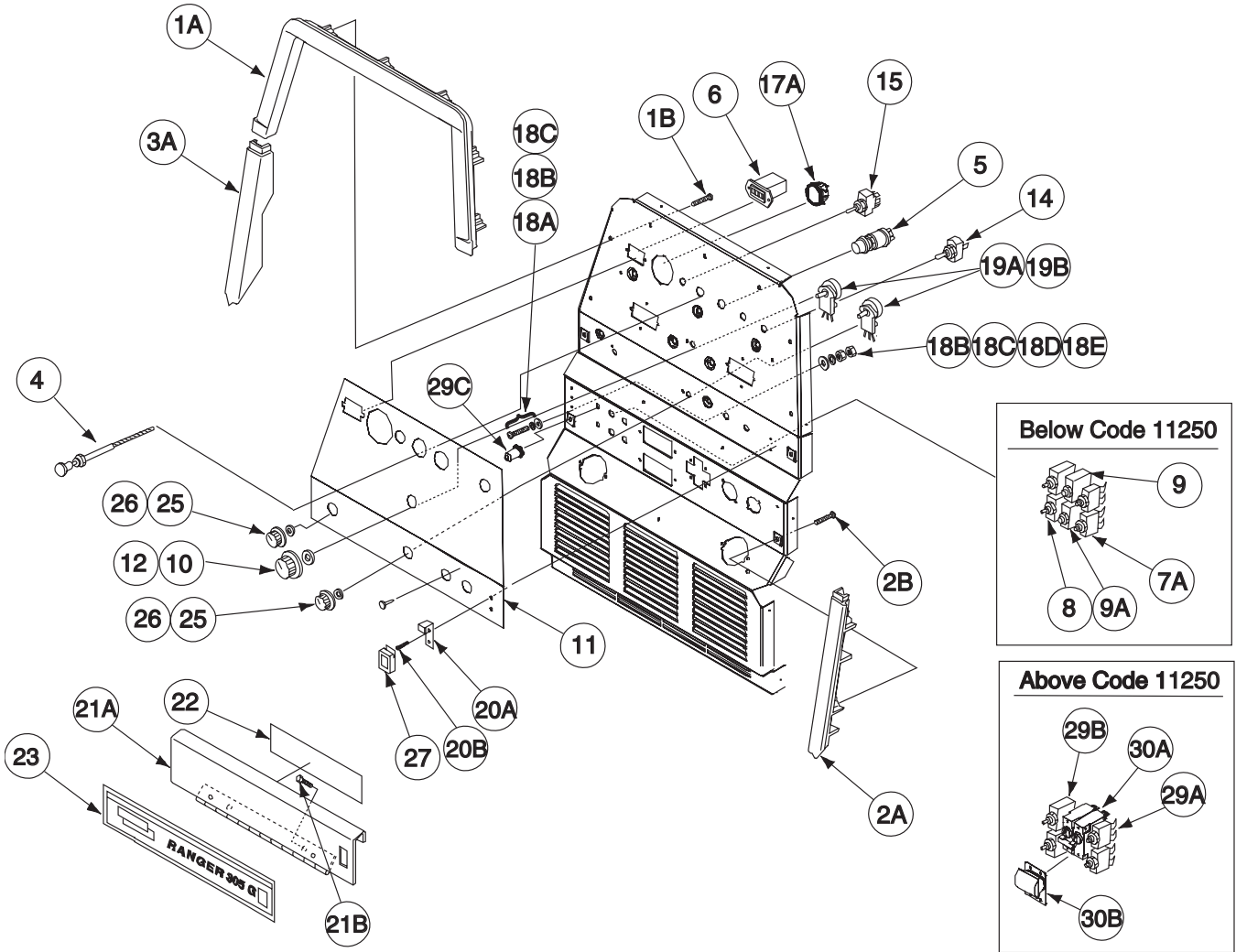
Part Numbers

Index of Sub Assemblies

Part Numbers

Index of Sub Assemblies

Part Numbers



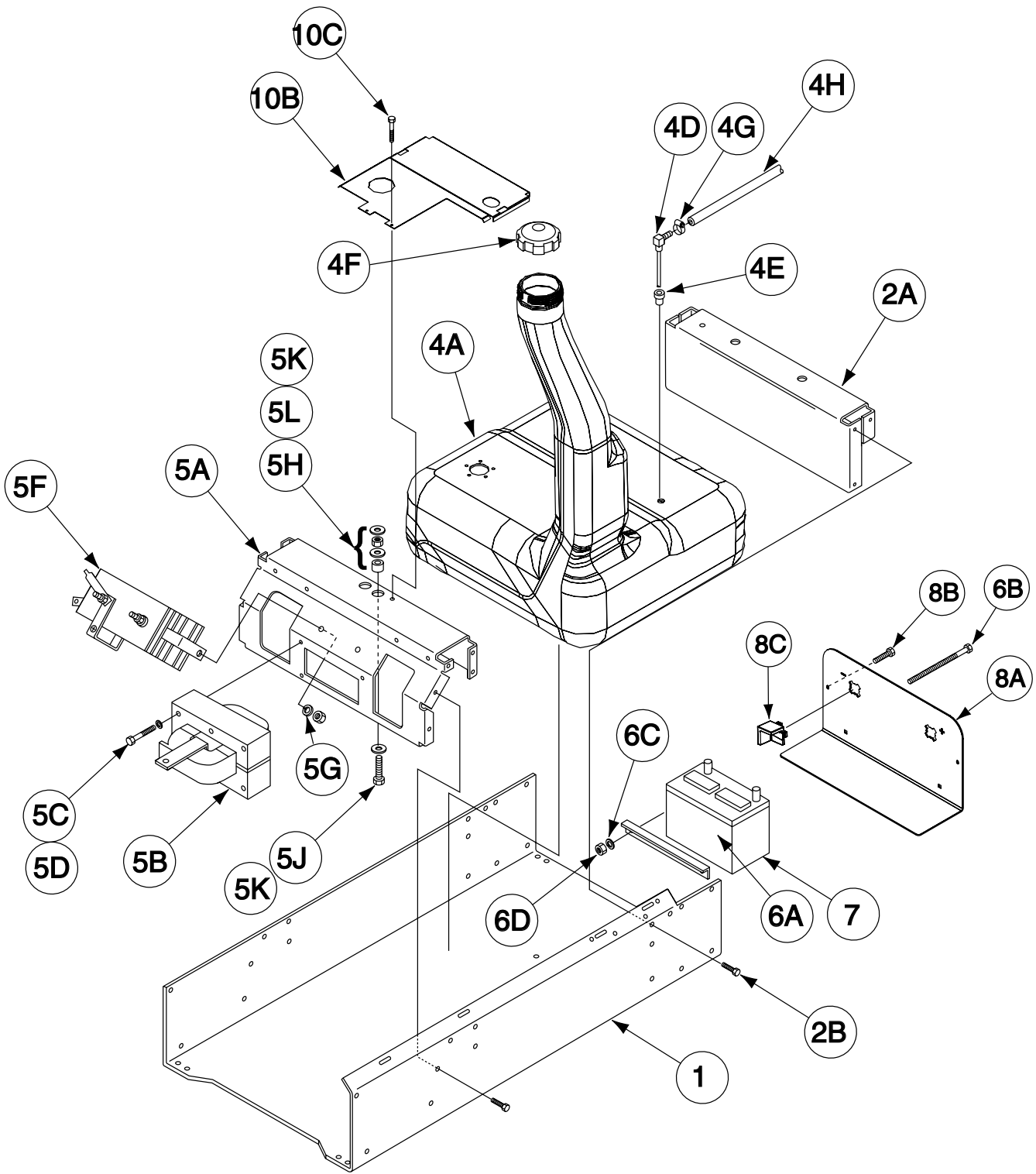
Indicates a change this printing.

Use only the parts marked "x" in the column under the heading number called for in the model index page.

| ITEM | DESCRIPTION | PART NO. | QTY. | 1 | 2 | 3 | 4 | 5 | 6 | 7 | 8 | 9 |
|------|--|------------|------|---|---|---|---|---|---|---|---|---|
| 1A | Top Bezel | G3593 | 1 | X | X | | | | | | | |
| 1B | Self Tapping Screw | S24738-1 | 3 | X | X | | | | | | | |
| 2A | Right Bezel | G3594-1 | 1 | X | X | | | | | | | |
| 2B | Self Tapping Screw | S24738-1 | 2 | X | X | | | | | | | |
| 3A | Left Bezel | G3594-2 | 1 | X | X | | | | | | | |
| 3B | Self Tapping Screw (Not Shown) | S24738-1 | 2 | X | X | | | | | | | |
| 4 | Choke Control | S7525-21 | 1 | X | X | | | | | | | |
| 5 | Start Button | S13146-1 | 1 | X | X | | | | | | | |
| 6 | Hour Meter-Miniature | S17475-3 | 1 | X | X | | | | | | | |
| 7A | Circuit Breaker - 50A, 250 VAC | T12287-19 | 2 | X | • | | | | | | | |
| 7B | #10-32 .375 RHS (Not Shown) | CF000113 | 2 | X | • | | | | | | | |
| 7C | Lock Washer (Not Shown) | E106A-1 | 2 | X | • | | | | | | | |
| 8 | Circuit Breaker - 20A, 250 VAC, 50 VDC | T12287-38 | 2 | X | • | | | | | | | |
| 9 | Circuit Breaker - 25A, 250 VAC, 24 VDC | T12287-21 | 1 | X | • | | | | | | | |
| 9A | Circuit Breaker - 15A, 250 VAC, 50 VDC | T12287-22 | 1 | X | • | | | | | | | |
| 10 | Knob | T10491-1 | 1 | X | X | | | | | | | |
| 11 | Nameplate | G4576 | 1 | X | X | | | | | | | |
| 12 | "O" Ring | T13483-7 | 1 | X | X | | | | | | | |
| 14 | Switch, Toggle (Idler) | T10800-38 | 1 | X | X | | | | | | | |
| 15 | Switch, Toggle (Run/Stop) | T10800-36 | 1 | X | X | | | | | | | |
| 17A | Electric Fuel Gauge | S17585-1 | 1 | X | X | | | | | | | |
| 17B | Plug & Lead Assembly (Not Shown) | S18250-889 | 1 | X | X | | | | | | | |
| 18A | Thread Forming Screw (Per Asbly) | S9225-76 | 1 | X | X | | | | | | | |
| 18B | Lock Washer (Per Asbly) | E106A-1 | 1 | X | X | | | | | | | |
| 18C | Plain Washer (Per Asbly) | S9262-27 | 2 | X | X | | | | | | | |
| 18D | Lock Washer (Per Asbly) | T9695-1 | 1 | X | X | | | | | | | |
| 18E | 1/4-20 HN (Per Asbly) | CF000017 | 1 | X | X | | | | | | | |
| 19A | Potentiometer (10K) | T10812-112 | 2 | X | X | | | | | | | |
| 19B | Potentiometer Spacer | S18280 | 2 | X | X | | | | | | | |
| 20A | Catch Bracket | S24659 | 1 | X | X | | | | | | | |
| 20B | Self Tapping Screw | S8025-98 | 2 | X | X | | | | | | | |
| 21A | Door Welded Assembly | L11185-1 | 1 | X | X | | | | | | | |
| 21B | Rivet | T12584-6 | 2 | X | X | | | | | | | |
| 22 | Procedure Decal | M19452-4 | 1 | X | X | | | | | | | |
| 23 | Front Door Nameplate | L11451-1 | 1 | X | X | | | | | | | |
| 25 | Knob | T10491 | 2 | X | X | | | | | | | |
| 26 | "O" Ring | T13483-7 | 2 | X | X | | | | | | | |
| 27 | Latch | S21033 | 1 | X | X | | | | | | | |
| 28 | Rotary Switch (Not Shown) | S16670-10 | 1 | X | X | | | | | | | |
| 29A | Circuit Breaker - 20A, 250 VAC, 50 VDC | T12287-38 | 3 | • | X | | | | | | | |
| 29B | Circuit Breaker - 15A, 250 VAC, 50 VDC | T12287-37 | 1 | • | X | | | | | | | |
| 29C | Sealing Boot | S22061-2 | 4 | • | X | | | | | | | |
| 30A | Circuit Breaker - 50A, 2-Pole | M20585 | 1 | • | X | | | | | | | |
| 30B | Circuit Breaker Cover Seal | S24911-2 | 1 | • | X | | | | | | | |
| 30C | Sems Screw (Not Shown) | T10082-30 | 4 | • | X | | | | | | | |
| 30D | Lock Washer (Not Shown) | T4291-A | 4 | • | X | | | | | | | |

Index of Sub Assemblies
Sub Assembly Illustration
Index of Sub Assemblies
Sub Assembly Illustration
Index of Sub Assemblies
Sub Assembly Illustration
Index of Sub Assemblies
Sub Assembly Illustration

Base/Fuel Tank/Battery Assembly



Index of Sub Assemblies

Part Numbers

Index of Sub Assemblies

Part Numbers

Index of Sub Assemblies

Part Numbers

Index of Sub Assemblies

Part Numbers

Indicates a change this printing.

Use only the parts marked "x" in the column under the heading number called for in the model index page.

| ITEM | DESCRIPTION | PART NO. | QTY. | 1 | 2 | 3 | 4 | 5 | 6 | 7 | 8 | 9 |
|------|---|------------|------|---|---|---|---|---|---|---|---|---|
| 1 | Base | G3870-1 | 1 | X | | | | | | | | |
| 2A | Engine Cross Support | L11147 | 1 | X | | | | | | | | |
| 2B | Thread Forming Screw (Cutting) | S9225-68 | 8 | X | | | | | | | | |
| 4 | Fuel Tank & Assembly, Includes: | L12164-1 | 1 | X | | | | | | | | |
| 4A | Fuel Tank | NSS | 1 | X | | | | | | | | |
| 4B | Fuel Sender (Not Shown) | M20302 | 1 | X | | | | | | | | |
| 4D | Fuel Pick-Up Tube Assembly | S19565-4 | 1 | X | | | | | | | | |
| 4E | Rubber Plug | S19563 | 1 | X | | | | | | | | |
| 4F | Fuel Cap | S20541 | 1 | X | | | | | | | | |
| 4G | Hose Clamp | T13777-7 | 2 | X | | | | | | | | |
| 4H | Flex Tube | T10642-188 | 1 | X | | | | | | | | |
| 5 | Rectifier, Choke, Stator Support Asbly, Includes: | L11135-3 | 1 | X | | | | | | | | |
| 5A | Stator Support Bracket | L11010 | 1 | X | | | | | | | | |
| 5B | Choke Asbly | M19416 | 1 | X | | | | | | | | |
| 5C | 5/16-18 x 2.75 HHCS | CF000073 | 3 | X | | | | | | | | |
| 5D | Lock Washer | E106A-14 | 3 | X | | | | | | | | |
| 5E | 5/16-18 HN (Not Shown) | CF000029 | 3 | X | | | | | | | | |
| 5F | Three Phase Rectifier Assembly | L11132-2 | 1 | X | | | | | | | | |
| 5G | Lock Washer | E106A-14 | 2 | X | | | | | | | | |
| 5H | Rubber Mounting | S24344 | 2 | X | | | | | | | | |
| 5J | 3/8-16 x 2.50 HHB | CF000196 | 2 | X | | | | | | | | |
| 5K | Plain Washer | S9262-113 | 6 | X | | | | | | | | |
| 5L | 3/8-16 HN | CF000067 | 4 | X | | | | | | | | |
| 6A | Battery Bracket | S22018 | 1 | X | | | | | | | | |
| 6B | Carriage Bolt | T11827-45 | 2 | X | | | | | | | | |
| 6C | Lock Washer | E106A-2 | 2 | X | | | | | | | | |
| 6D | 1/4-20 HN | CF000017 | 2 | X | | | | | | | | |
| 7 | 12 Volt Storage Battery | M9399-13 | 1 | X | | | | | | | | |
| 8A | Battery Tray | L10955-1 | 1 | X | | | | | | | | |
| 8B | Thread Forming Screw (Cutting) | S9225-68 | 2 | X | | | | | | | | |
| 8C | Support | M16528 | 2 | X | | | | | | | | |
| 9A | Battery Cable (Neg.) (Not Shown) | S8070-28 | 1 | X | | | | | | | | |
| 9B | Battery Cable (Pos.) (Not Shown) | S8070-11 | 1 | X | | | | | | | | |
| 10B | Cross Mounting Bracket | G4003-1 | 1 | X | | | | | | | | |
| 10C | Thread Forming Screw | S9225-68 | 2 | X | | | | | | | | |

Index of Sub Assemblies
 Sub Assembly Illustration
 Index of Sub Assemblies
 Sub Assembly Illustration
 Index of Sub Assemblies
 Sub Assembly Illustration
 Index of Sub Assemblies
 Sub Assembly Illustration

Engine Assembly

Index of Sub Assemblies

Part Numbers

Index of Sub Assemblies

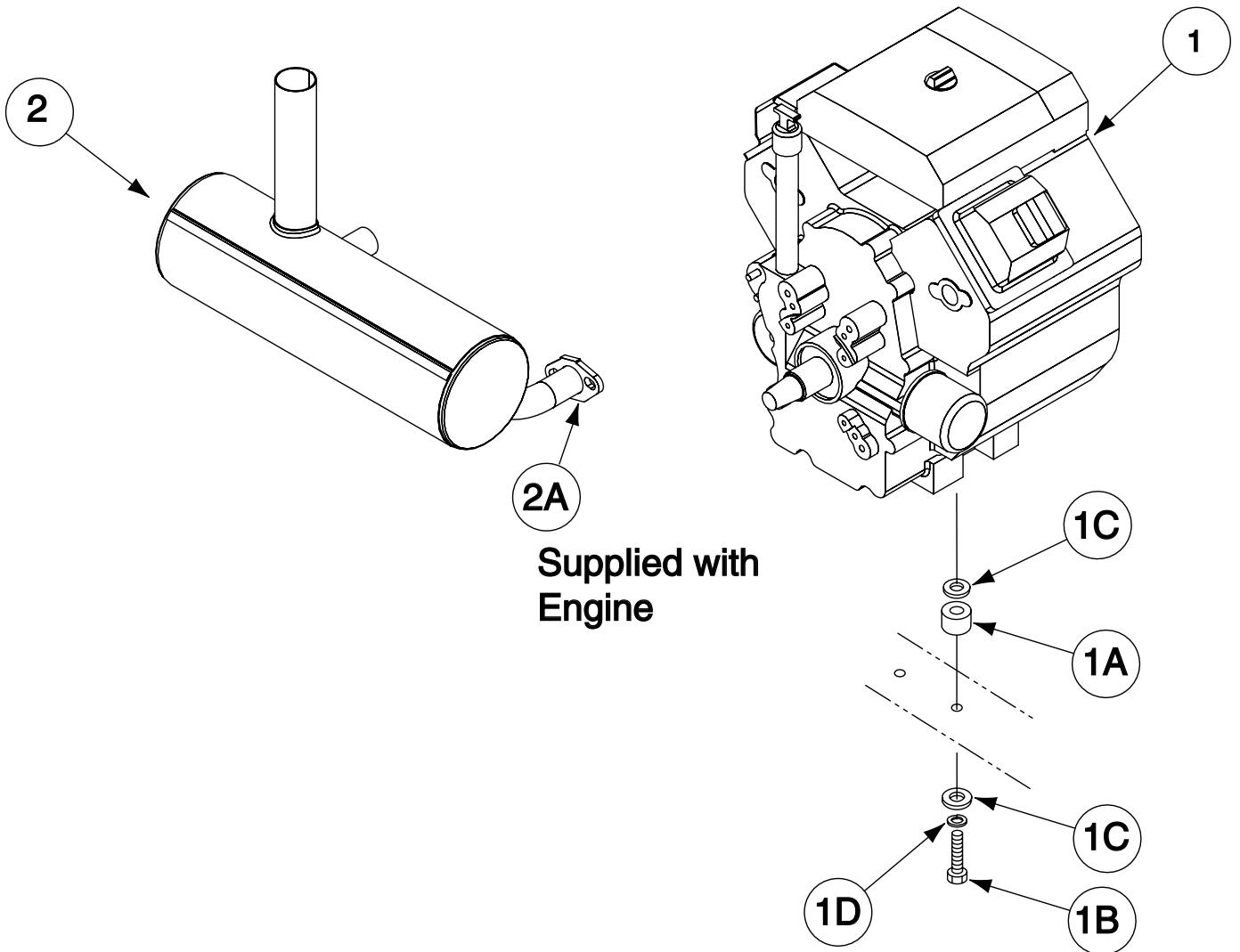
Part Numbers

Index of Sub Assemblies

Part Numbers

Index of Sub Assemblies

Part Numbers



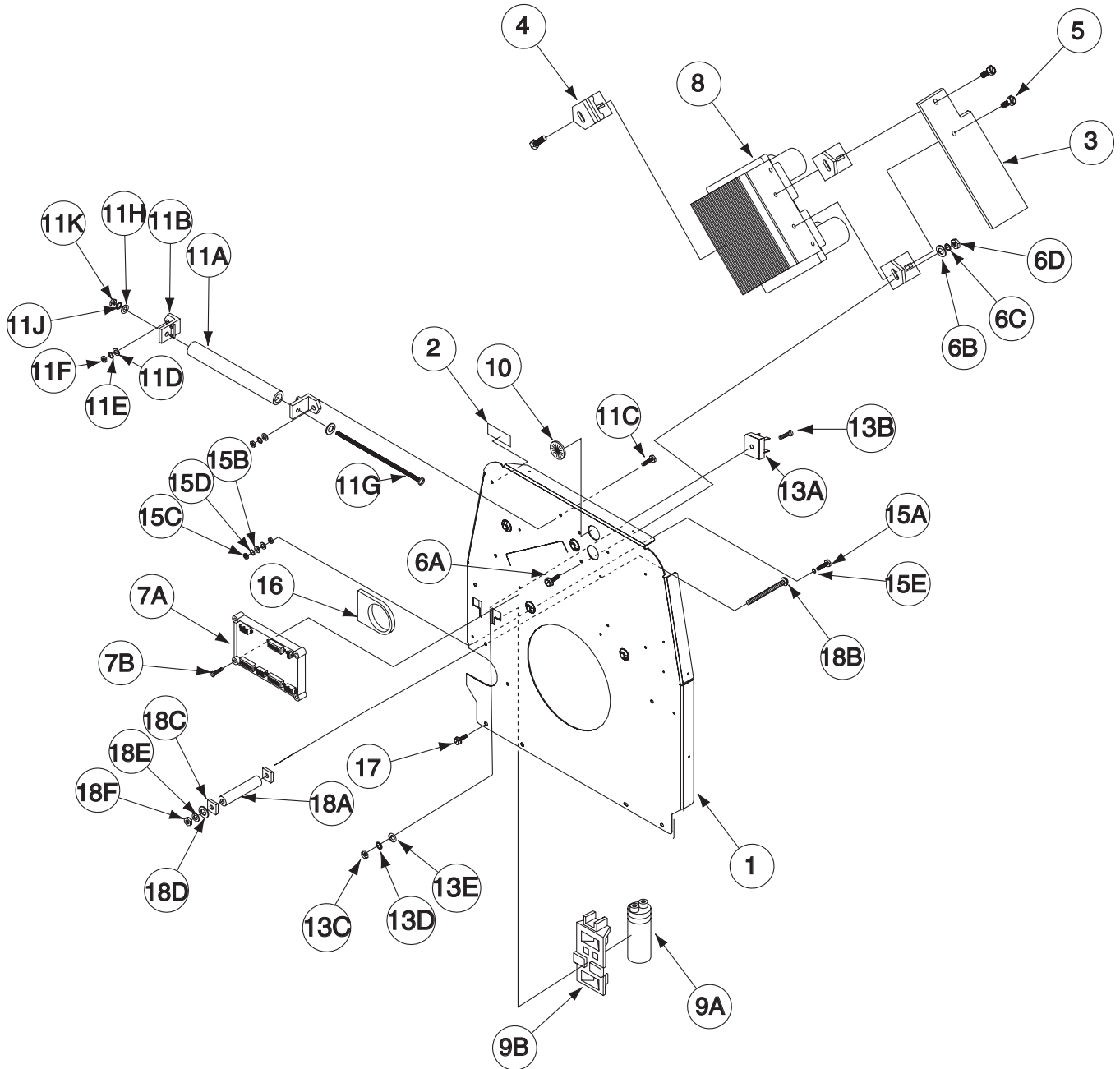
Indicates a change this printing.

Use only the parts marked "x" in the column under the heading number called for in the model index page.

| ITEM | DESCRIPTION | PART NO. | QTY. | 1 | 2 | 3 | 4 | 5 | 6 | 7 | 8 | 9 |
|------|-------------------------------------|------------|------|---|---|---|---|---|---|---|---|---|
| 1 | Engine - Kohler 22 HP | M19591 | 1 | X | • | | | | | | | |
| 1 | Engine - Kohler 23 HP | M21300 | 1 | • | X | | | | | | | |
| 1A | Rubber Mounting | S24344 | 2 | X | X | | | | | | | |
| 1B | 3/8-16 x 3.00 HHCS | CF000039 | 2 | X | X | | | | | | | |
| 1C | Plain Washer | S9262-113 | 6 | X | X | | | | | | | |
| 1D | Lock Washer | E106A-16 | 2 | X | X | | | | | | | |
| 1E | Plain Washer (Not Shown) | S9262-120 | 2 | X | X | | | | | | | |
| 1F | 3/8-16 HN (Not Shown) | CF000067 | 2 | X | X | | | | | | | |
| 2 | Muffler Assembly | G3574-4 | 1 | X | X | | | | | | | |
| 2A | Exhaust Gasket (Supplied w/Engine) | M16999-1 | 2 | X | X | | | | | | | |
| 2B | Hex Flange Nut M8 X 2.0 (Not Shown) | NSS | 2 | X | X | | | | | | | |
| 4 | Oil Drain Valve (Not Shown) | S24662 | 1 | X | X | | | | | | | |
| 5A | Outlet Pipe (Not Shown) | M16980-1 | 1 | X | X | | | | | | | |
| 5B | Spark Arrestor Clamp (Not Shown) | S20462 | 1 | X | X | | | | | | | |
| 6 | Engine Seal (Not Shown) | S22415-7 | 1 | X | X | | | | | | | |

Index of Sub Assemblies
 Sub Assembly Illustration
 Index of Sub Assemblies
 Sub Assembly Illustration
 Index of Sub Assemblies
 Sub Assembly Illustration
 Index of Sub Assemblies
 Sub Assembly Illustration

Blower Baffle Assembly



Index of Sub Assemblies

Part Numbers

Index of Sub Assemblies

Part Numbers

Index of Sub Assemblies

Part Numbers

Index of Sub Assemblies

Part Numbers

Indicates a change this printing.

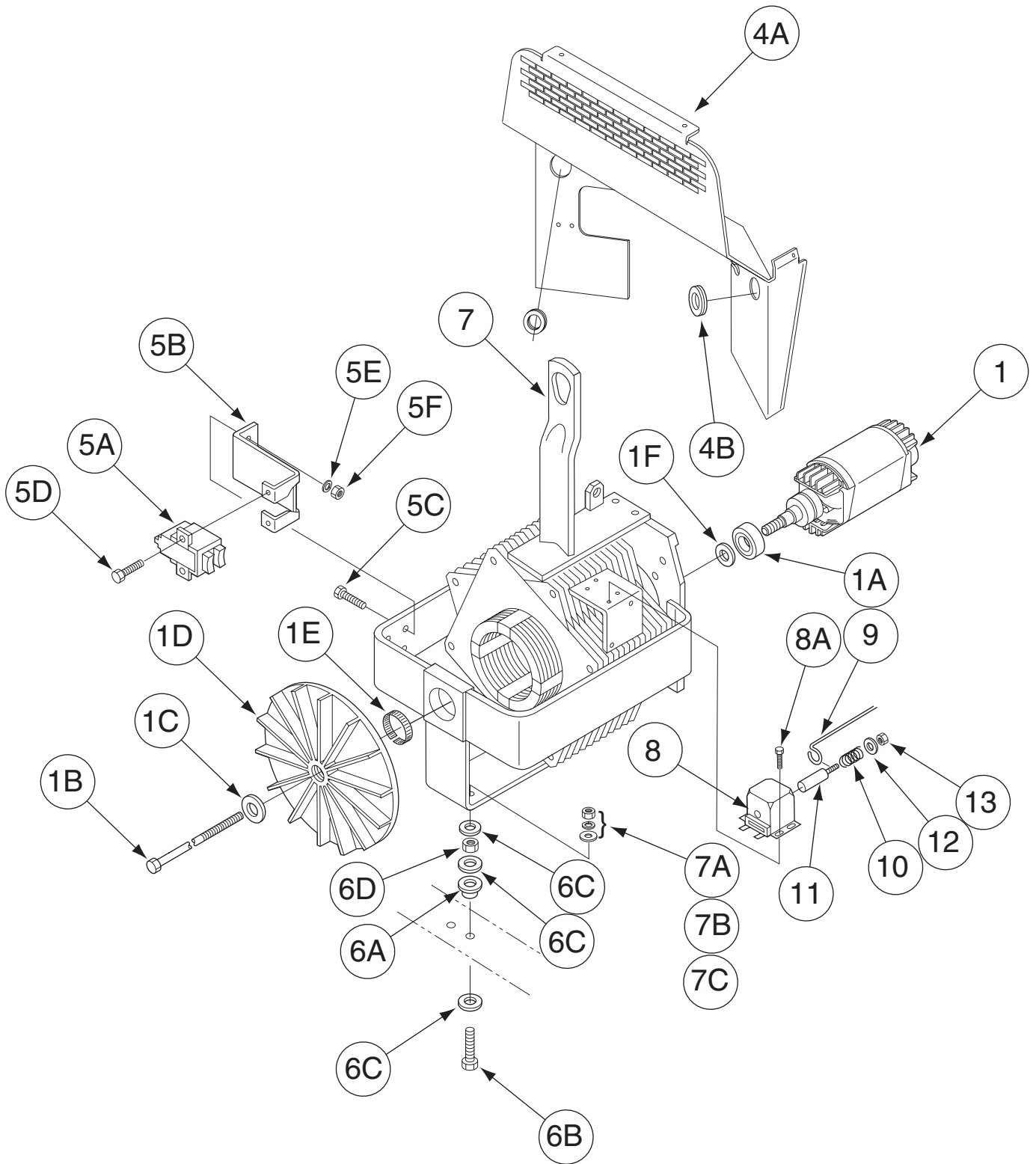
Use only the parts marked "x" in the column under the heading number called for in the model index page.

| ITEM | DESCRIPTION | PART NO. | QTY. | 1 | 2 | 3 | 4 | 5 | 6 | 7 | 8 | 9 |
|------|---------------------------------|------------|------|---|---|---|---|---|---|---|---|---|
| | Blower Baffle Assembly | NSS | 1 | X | | | | | | | | |
| 1 | Baffle | G3862-1 | 1 | X | | | | | | | | |
| 2 | Warning Decal | T13086-163 | 2 | X | | | | | | | | |
| 3 | Baffle | S24624 | 1 | X | | | | | | | | |
| 4 | Heat Sink Holder | S22168 | 3 | X | | | | | | | | |
| 5 | Thread Forming Screw (Cutting) | S9225-17 | 3 | X | | | | | | | | |
| 6A | Thread Forming Screw Cutting) | S9225-17 | 3 | X | | | | | | | | |
| 6B | Plain Washer | S9262-98 | 3 | X | | | | | | | | |
| 6C | Lock Washer | E106A-2 | 3 | X | | | | | | | | |
| 6D | 1/4-20 Hex Nut | CF000017 | 3 | X | | | | | | | | |
| 7A | Weld Control PC Board Assembly | G4107-[] | 1 | X | | | | | | | | |
| 7B | Self Tapping Screw | S8025-100 | 4 | X | | | | | | | | |
| 8 | Chopper Heatsink Assembly | L11845-[] | 1 | X | | | | | | | | |
| 9A | Capacitor | S13490-114 | 1 | X | | | | | | | | |
| 9B | Capacitor Bracket | L9250 | 1 | X | | | | | | | | |
| 10 | Bushing | T14614-1 | 2 | X | | | | | | | | |
| 11A | Resistor | S10404-122 | 1 | X | | | | | | | | |
| 11B | Heat Sink Holder | S22168 | 2 | X | | | | | | | | |
| 11C | Thread Forming Screw (Cutting) | S9225-17 | 2 | X | | | | | | | | |
| 11D | Plain Washer | S9262-98 | 2 | X | | | | | | | | |
| 11E | Lockwasher | E106A-2 | 2 | X | | | | | | | | |
| 11F | 1/4-20HN-1427 | CF000017 | 2 | X | | | | | | | | |
| 11G | #10-24 X 7.50 RHS | CF000191 | 1 | X | | | | | | | | |
| 11H | Plain Washer | S9262-27 | 2 | X | | | | | | | | |
| 11J | Lock Washer | E106A-1 | 1 | X | | | | | | | | |
| 11K | #10-24 HN | CF000010 | 1 | X | | | | | | | | |
| 13A | Diode Bridge, 35A, 400V, FW 1PH | T13637-1 | 1 | X | | | | | | | | |
| 13B | #10-24x.75 RHS (Not Shown) | CF000072 | 1 | X | | | | | | | | |
| 13C | #10-24 Hex Nut (Not Shown) | CF000010 | 1 | X | | | | | | | | |
| 13D | Lock Washer (Not Shown) | E106-A-1 | 1 | X | | | | | | | | |
| 13E | #10 Washer, Plain (Not Shown) | S9262-27 | 1 | X | | | | | | | | |
| 15A | Thread Forming Screw | S9225-76 | 1 | X | | | | | | | | |
| 15B | Plain Washer | S9262-27 | 2 | X | | | | | | | | |
| 15C | Hex Nut | CF000010 | 2 | X | | | | | | | | |
| 15D | Lock Washer | E106A-1 | 1 | X | | | | | | | | |
| 15E | Lock Washer | T9695-1 | 1 | X | | | | | | | | |
| 16 | Grommet | S18543-5 | 1 | X | | | | | | | | |
| 17 | Thread Forming Screw (Cutting) | S9225-68 | 1 | X | | | | | | | | |
| 18A | Resistor | S10404-99 | 1 | X | | | | | | | | |
| 18B | #10-24 x 3 RHS | CF000009 | 1 | X | | | | | | | | |
| 18C | Insulating Washer | T4479-A | 2 | X | | | | | | | | |
| 18D | Plain Washer | S9262-27 | 1 | X | | | | | | | | |
| 18E | Washer #10 Lock | E106A-1 | 1 | X | | | | | | | | |
| 18F | #10-24 Hex Nut | CF000010 | 1 | X | | | | | | | | |

Note: When ordering new printed circuit boards indicate the dash number [] of the "Old" board that is to be replaced. This will aid Lincoln in supplying the correct and latest board along with any necessary jumpers or adapters. The dash number brackets [] have purposely been left blank so as to eliminate errors, confusion and updates.

Index of Sub Assemblies
 Sub Assembly Illustration
 Index of Sub Assemblies
 Sub Assembly Illustration
 Index of Sub Assemblies
 Sub Assembly Illustration
 Index of Sub Assemblies
 Sub Assembly Illustration

Stator/Rotor Assembly



Index of Sub Assemblies
 Index of Sub Assemblies
 Index of Sub Assemblies
 Index of Sub Assemblies

Part Numbers
 Part Numbers
 Part Numbers
 Part Numbers

Indicates a change this printing.

Use only the parts marked "x" in the column under the heading number called for in the model index page.

| ITEM | DESCRIPTION | PART NO. | QTY. | 1 | 2 | 3 | 4 | 5 | 6 | 7 | 8 | 9 |
|------|--|-----------|------|---|---|---|---|---|---|---|---|---|
| 1 | Rotor & Shaft Assembly | L11086-2 | 1 | X | | | | | | | | |
| 1A | Bearing | M9300-85 | 1 | X | | | | | | | | |
| 1B | Special Hex Head Bolt | T14843-6 | 1 | X | | | | | | | | |
| 1C | Plain Washer | S9262-149 | 1 | X | | | | | | | | |
| 1D | Blower | L9033 | 1 | X | | | | | | | | |
| 1E | Tolerance Ring | S18044-9 | 1 | X | | | | | | | | |
| 1F | Centering Washer | S20110-3 | 1 | X | | | | | | | | |
| 4A | Upper Firewall | G3849 | 1 | X | | | | | | | | |
| 4B | Bushing | T12380-1 | 3 | X | | | | | | | | |
| 5A | Brush & Brush Holder Assembly, Includes: | M16158 | 1 | X | | | | | | | | |
| | Brush Holder Cartridge | G2114 | 1 | X | | | | | | | | |
| | Brush Assembly | S19480 | 2 | X | | | | | | | | |
| | Brush Clip | S19475 | 2 | X | | | | | | | | |
| | Compression Spring | T11862-44 | 2 | X | | | | | | | | |
| | Brush | S19474 | 2 | X | | | | | | | | |
| 5B | Brush Holder Bracket | M18336 | 1 | X | | | | | | | | |
| 5C | Self Tapping Screw | S8025-91 | 2 | X | | | | | | | | |
| 5D | 1/4-20 x .75 HHCS | CF000014 | 2 | X | | | | | | | | |
| 5E | Lock Washer | E106A-2 | 2 | X | | | | | | | | |
| 5F | 1/4-10 HN | CF000017 | 2 | X | | | | | | | | |
| 6A | Rubber Mounting | S24344 | 2 | X | | | | | | | | |
| 6B | 3/8-16 x 2.50 HHB | CF000196 | 2 | X | | | | | | | | |
| 6C | Plain Washer | S9262-113 | 6 | X | | | | | | | | |
| 6D | 3/8-16 HN | CF000067 | 4 | X | | | | | | | | |
| 7 | Stator Frame Assembly | G3541-6 | 1 | X | | | | | | | | |
| 7A | 3/8-16 HN | CF000067 | 2 | X | | | | | | | | |
| 7B | Lock Washer | E106A-16 | 2 | X | | | | | | | | |
| 7C | Plain Washer | S9262-120 | 2 | X | | | | | | | | |
| 8 | Solenoid Assembly | S20752 | 1 | X | | | | | | | | |
| 8A | Self Tapping Screw | S8025-91 | 3 | X | | | | | | | | |
| 9 | Pull Wire | S20848 | 1 | X | | | | | | | | |
| 9A | Bracket (Not Shown) | S21177 | 1 | X | | | | | | | | |
| 9B | Bushing, Linkage Retaining (Not Shown) | S21015 | 2 | X | | | | | | | | |
| 10 | Spring | T6778 | 1 | X | | | | | | | | |
| 11 | Plunger | S21020 | 1 | X | | | | | | | | |
| 12 | Plain Washer | S9262-98 | 1 | X | | | | | | | | |
| 13 | 1/4-20 HJN | T9187-1 | 1 | X | | | | | | | | |

Index of Sub Assemblies
 Sub Assembly Illustration
 Index of Sub Assemblies
 Sub Assembly Illustration
 Index of Sub Assemblies
 Sub Assembly Illustration
 Index of Sub Assemblies
 Sub Assembly Illustration

Covers & Case Back Assembly

Index of Sub Assemblies

Index of Sub Assemblies

Index of Sub Assemblies

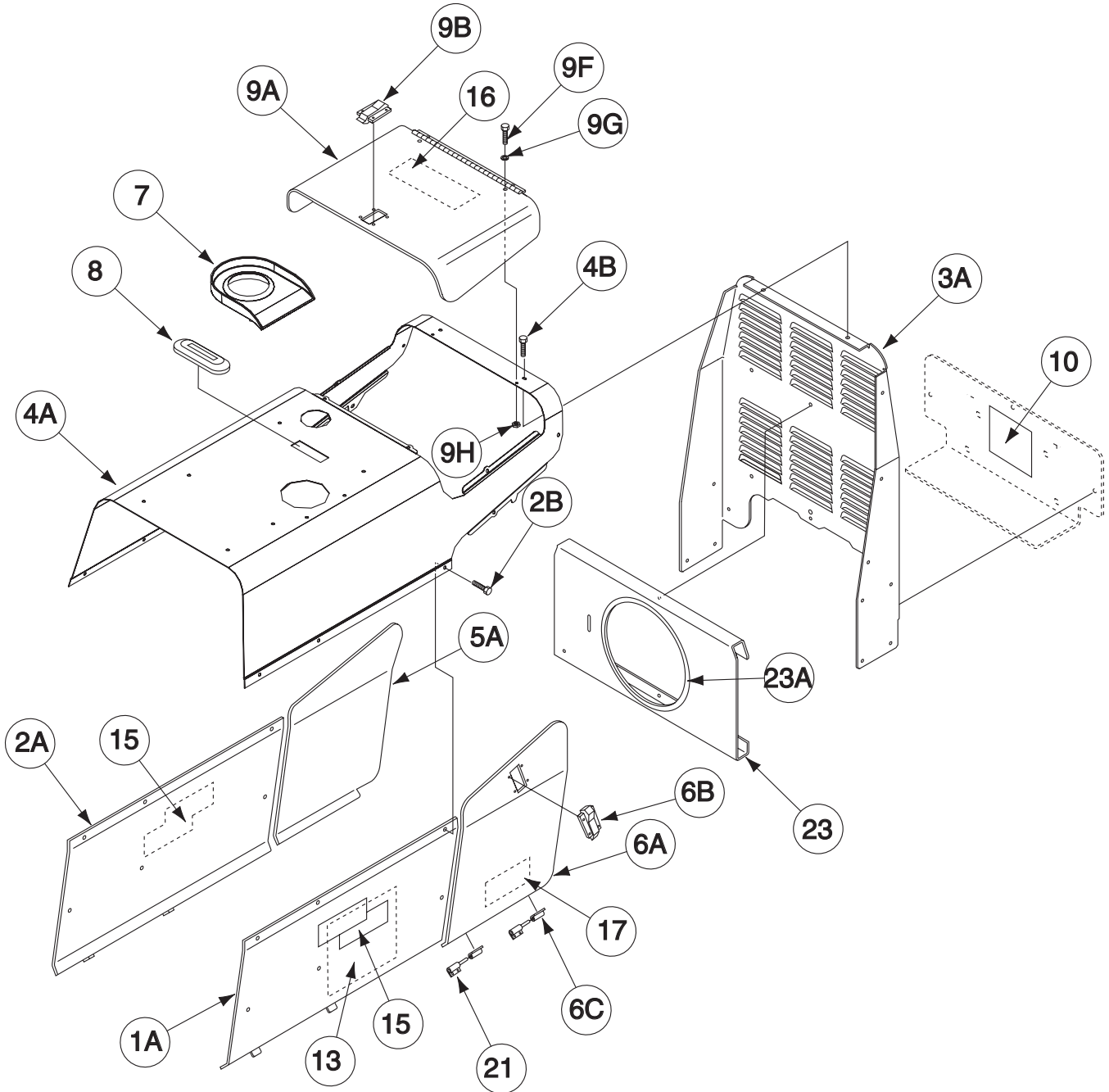
Index of Sub Assemblies

Part Numbers

Part Numbers

Part Numbers

Part Numbers



Indicates a change this printing.

Use only the parts marked "x" in the column under the heading number called for in the model index page.

| ITEM | DESCRIPTION | PART NO. | QTY. | 1 | 2 | 3 | 4 | 5 | 6 | 7 | 8 | 9 |
|------|--|------------|------|---|---|---|---|---|---|---|---|---|
| 1A | Case Side - Right | G3510-1 | 1 | X | X | | | | | | | |
| 1B | Thread Forming Screw (Cutting) (Not Shown) | S9225-68 | 3 | X | X | | | | | | | |
| 2A | Case Side - Left | G3511-1 | 1 | X | X | | | | | | | |
| 2B | Thread Forming Screw (Cutting) | S9225-68 | 3 | X | X | | | | | | | |
| 3A | Case Back | G3865-1 | 1 | X | X | | | | | | | |
| 3B | Thread Forming Screw (Cutting) (Not Shown) | S9225-68 | 4 | X | X | | | | | | | |
| 3C | Fastener Button (Not Shown) | T14659-1 | 2 | X | X | | | | | | | |
| 4A | Roof | G3882-5 | 1 | X | X | | | | | | | |
| 4B | Thread Forming Screw (Cutting) | S9225-68 | 16 | X | X | | | | | | | |
| 4C | Door Bumper (Not Shown) | T14882-1 | 2 | X | X | | | | | | | |
| 5A | Left Engine Cover | L11529-3 | 1 | X | X | | | | | | | |
| 5B | Thread Forming Screw (Cutting) (Not Shown) | S9225-68 | 1 | X | X | | | | | | | |
| 5C | Speed Nut (Not Shown) | T11525-5 | 1 | X | X | | | | | | | |
| 6A | Right Engine Cover | L11528-1 | 1 | X | X | | | | | | | |
| 6B | Latch | S24694 | 1 | X | X | | | | | | | |
| 6C | Hinge | S24348 | 2 | X | X | | | | | | | |
| 6E | Rivet (Not Shown) | T12584-9 | 8 | X | X | | | | | | | |
| 7 | Fuel Trough | L12084 | 1 | X | X | | | | | | | |
| 8 | Cover Seal | S12934 | 1 | X | X | | | | | | | |
| 9A | Engine Top Cover Welded Assembly | G3514-1 | 1 | X | X | | | | | | | |
| 9B | Latch | S24694 | 1 | X | X | | | | | | | |
| 9D | Door Bumper (Not Shown) | T14882 | 2 | X | X | | | | | | | |
| 9E | Rivet (Not Shown) | T12584-9 | 2 | X | X | | | | | | | |
| 9F | Thread Forming Screw | S9225-36 | 2 | X | X | | | | | | | |
| 9G | Lock Washer | E106A-1 | 2 | X | X | | | | | | | |
| 9H | #10-24 HN | CF000010 | 2 | X | X | | | | | | | |
| 10 | Battery Caution Decal | S17851 | 1 | X | X | | | | | | | |
| 11 | Warning Label (Not Shown) | M16197 | 1 | X | X | | | | | | | |
| 12 | Fuel Warning Decal (Not Shown) | T13086-108 | 1 | X | X | | | | | | | |
| 13 | Wiring Diagram | G4386 | 1 | X | X | | | | | | | |
| 15 | Logo Decal | G3399-1 | 2 | X | X | | | | | | | |
| 16 | Engine Decal | S24323 | 1 | X | • | | | | | | | |
| 16 | Engine Decal | S26884 | 1 | • | X | | | | | | | |
| 17 | Oil Drain Decal | S24665 | 1 | X | X | | | | | | | |
| 21 | Hinge Assembly (Right Side) | S24295-1 | 2 | X | X | | | | | | | |
| 23 | Airbox | G3569-2 | 1 | X | X | | | | | | | |
| 23A | Engine Seal | S22415-7 | 1 | X | X | | | | | | | |
| 23B | Thread Forming Screw (Cutting) (Not Shown) | S9225-68 | 4 | X | X | | | | | | | |
| 24 | Flex Tube (Not Shown) | T10642-242 | 1 | X | X | | | | | | | |

Index of Sub Assemblies
 Sub Assembly Illustration
 Index of Sub Assemblies
 Sub Assembly Illustration
 Index of Sub Assemblies
 Sub Assembly Illustration
 Index of Sub Assemblies
 Sub Assembly Illustration

NOTES

Index of Sub Assemblies

Index of Sub Assemblies

Index of Sub Assemblies

Index of Sub Assemblies

RED-D-ARC GX 300

**Red-D-Arc
Weiderentals**
1-866-733-3272