

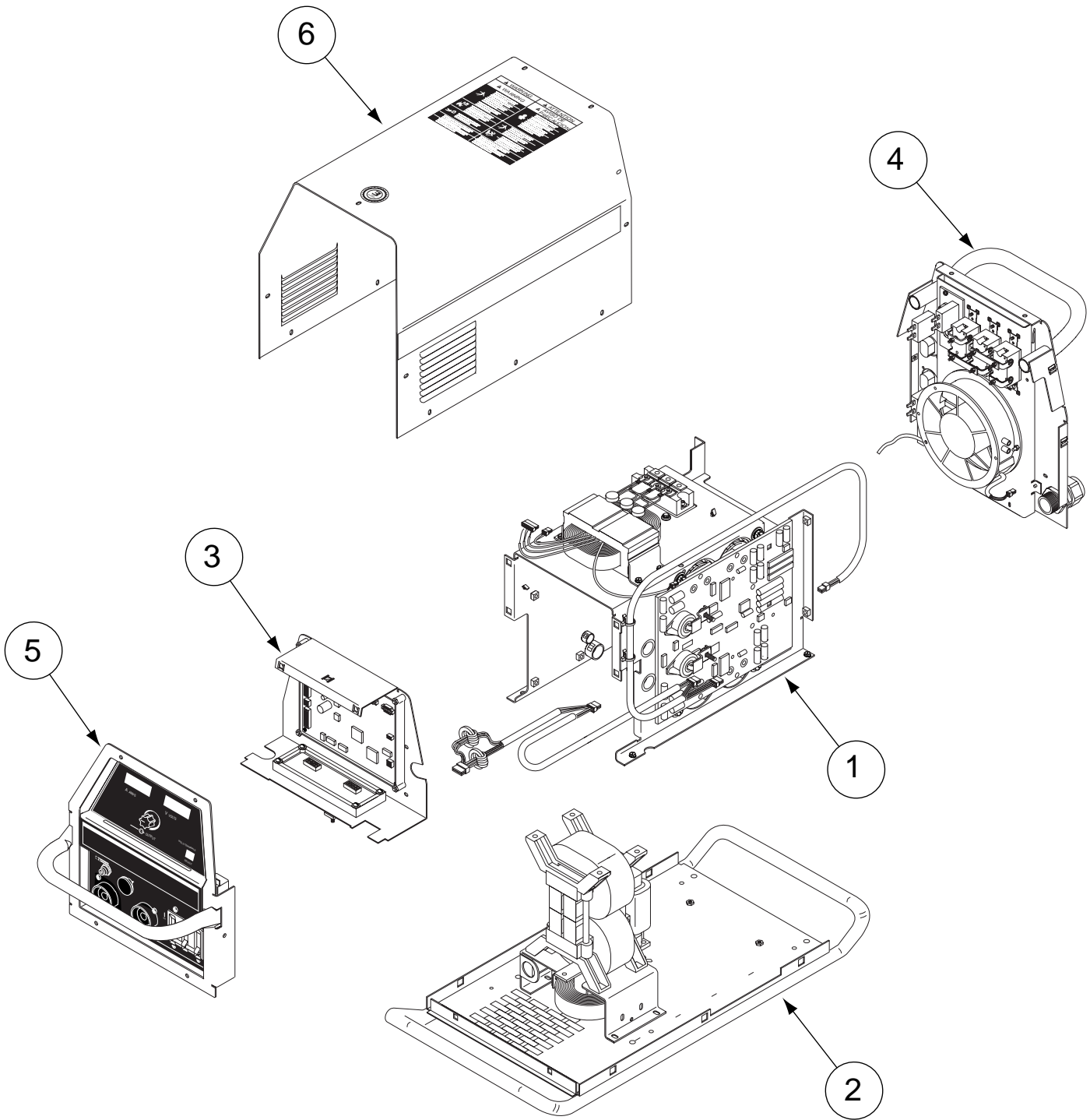
# PARTS LIST FOR

# EX350i

EX350i



# ILLUSTRATION OF SUB-ASSEMBLIES





# OPTIONAL EQUIPMENT LISTING

Miscellaneous Options Available for your machine are listed below:

# Indicates a change this printing.

DESCRIPTION .....	PART NUMBER
Tig, Gas Control Kit .....	Order K1762-1

#  
#



# Indicates a change this printing.

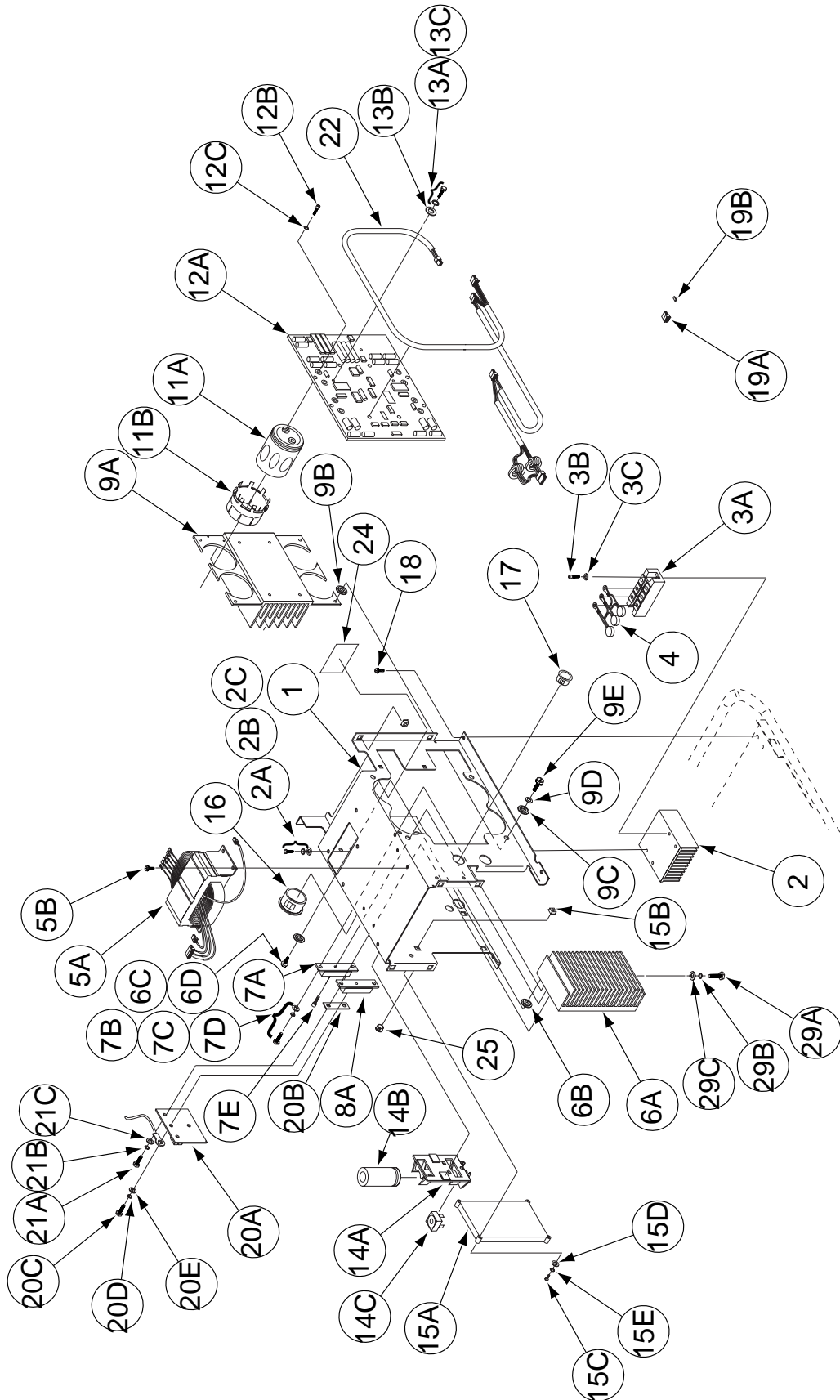
Use only the parts marked "x" in the column under the heading number called for in the model index page.

**Recommended Spare Part are Highlighted Bold**

DESCRIPTION	PART NO.	QTY.	1	2	3	4	5	6	7	8	9
Twist-Mate Cable Plug	M15479	2	X								
Plug & Lead Assembly (J56)	S18250-744	1	X								
Plug & Lead Assembly (P451)	S18250-745	1	X								
Plug & Lead Assembly (P4, P42, P43, P54)	S18250-641	1	X								
Plug & Lead Assembly (P9)	S18250-621	1	X								
Shield	M19659	2	X								



# Center Panel



# Indicates a change this printing.

Use only the parts marked "x" in the column under the heading number called for in the model index page.

Recommended Spare Parts are Highlighted in Bold

ITEM	DESCRIPTION	PART NO.	QTY.	1	2	3	4	5	6	7	8	9
1	Center Panel	G3846	1	X	•							
1	Center Panel	G3606	1	•	X							
2	Input Heatsink	S24574	1	X	X							
2A	1/4-20 x .50 Hex Head Cap Screw	CF000012	2	X	X							
2B	Lock Washer	E106A-2	2	X	X							
2C	Plain Washer	S9262-98	2	X	X							
<b>3A</b>	<b>Diode-Bridge, 160A, 1600Volt</b>	<b>M15454-8</b>	<b>1</b>	<b>X</b>	<b>X</b>							
3B	Socket Head Cap Screw 1/4-20 x .88	T9447-9	2	X	X							
3C	Spring Washer	T12735-4	2	X	X							
4	MOV Assembly	S18491-1	1	X	X							
<b>5A</b>	<b>Auxiliary Transformer Assembly</b>	<b>L11320</b>	<b>1</b>	<b>X</b>	<b>X</b>							
5B	Thread Forming Screw	S9225-8	4	X	X							
6A	Output Rectifier Heat Sink	M19349	1	X	X							
6B	Insulator	T11267-A	4	X	X							
6C	Insulator	T11267-B	4	X	X							
6D	Thread Forming Screw	S9225-17	4	X	X							
<b>7A</b>	<b>Output Rectifier</b>	<b>M15454-9</b>	<b>2</b>	<b>X</b>	<b>X</b>							
7B	1/4-20 x .50 Hex Head Cap Screw	CF000012	4	X	X							
7C	Plain Washer	S9262-98	4	X	X							
7D	Lock Washer	E106A-2	4	X	X							
7E	Socket Head Cap Screw	T9447-21	2	X	X							
<b>8A</b>	<b>Output Rectifier</b>	<b>M15454-10</b>	<b>1</b>	<b>X</b>	<b>X</b>							
8B	1/4-20 x .50 Hex Head Cap Screw (Not Shown)	CF000012	2	X	X							
8C	Plain Washer (Not Shown)	S9262-98	2	X	X							
8D	Lock Washer (Not Shown)	E106A-2	2	X	X							
8E	Socket Head Cap Screw (Not Shown)	T9447-21	1	X	X							
9A	Switch Board Heat Sink Assembly	M19691	1	X	•							
9A	Switch Board Heat Sink Assembly	L11101	1	•	X							
9B	Insulator	T11267-A	4	X	X							
9C	Insulator	T11267-B	4	X	X							
9D	Washer	S10773-77	4	X	X							
9E	Thread Forming Screw	S9225-17	4	X	X							
<b>11A</b>	<b>Capacitor</b>	<b>S13490-171</b>	<b>4</b>	<b>X</b>	<b>X</b>							
11B	Capacitor Bracket	M19144	4	X	X							
<b>12A</b>	<b>Switch Board</b>	<b>G3636-[ ]</b>	<b>1</b>	<b>X</b>	<b>X</b>							
12B	Socket Head Cap Screw	T9447-9	4	X	X							
12C	Lock Washer	E106A-2	4	X	X							
12D	Support, PCB, Nut	S19300-2	2	X	X							
12E	Self Tapping (Not Shown)	S8025-71	2	X	X							
13A	1/4-20 x .50 Hex Head Cap Screw	CF000012	1	X	X							
13B	Plain Washer	S9262-98	2	X	X							
13C	Lock Washer	E106A-2	2	X	X							
14A	Capacitor Mounting Bracket	L9250	1	X	X							
<b>14B</b>	<b>Capacitor</b>	<b>S13490-175</b>	<b>1</b>	<b>X</b>	<b>X</b>							
14C	Diode Bridge	T13637	1	X	X							
<b>15A</b>	<b>Digital Power P.C. Board Assembly</b>	<b>G3632-[ ]</b>	<b>1</b>	<b>X</b>	<b>X</b>							
15B	Nut Retainer	T10097-4	4	X	X							
15C	#10-24 x 1.25 Round Head Screw	CF000149	4	X	X							
15D	Plain Washer	S9262-27	4	X	X							



# Indicates a change this printing.

Use only the parts marked "x" in the column under the heading number called for in the model index page.

Recommended Spare Parts are Highlighted in Bold

ITEM	DESCRIPTION	PART NO.	QTY.	1	2	3	4	5	6	7	8	9
15E	Lock Washer	E106A-1	4	X	X							
16	Grommet	T12380-1	1	X	X							
17	Grommet	T12380-4	3	X	X							
18	Thread Forming Screw	S9225-8	4	X	X							
19A	Connector Molex	S24017-4	1	X	X							
19B	Connector, Locking Post	S24019-4	1	X	X							
<b>20A</b>	<b>Snubber P.C. Board Assembly</b>	<b>M19352-[ ]</b>	<b>1</b>	<b>X</b>	<b>X</b>							
20B	Lead, Flat Copper	T14190-1	2	X	X							
20C	1/4-20 x .625 Hex Head Cap Screw	CF000013	6	X	X							
20D	Lock Washer	E106A-2	6	X	X							
20E	Plain Washer	S9262-98	6	X	X							
21A	1/4-20 x .50 Hex Head Cap Screw	CF00012	4	X	X							
21B	Lock Washer	E106A-2	4	X	X							
21C	Plain Washer	S9262-98	4	X	X							
22	Harness Assembly	M19692	1	X	•							
22	Harness Assembly	M19608	1	•	X							
<b>23</b>	<b>Current Transducer</b>	<b>M19612</b>	<b>1</b>	<b>X</b>	<b>X</b>							
24	Insulation	CI001142	1	X	X							
29A	5/16-18 x .75 Hex Head Cap Screw	CF000040	1	X	X							
29B	Lock Washer	E106A-14	1	X	X							
29C	Plain Washer	S9262-30	1	X	X							

Note: When ordering new printed circuit boards indicate the dash number [ ] of the "Old" board that is to be replaced. This will aid Lincoln in supplying the correct and latest board along with any necessary jumpers or adapters. The dash number brackets [ ] have purposely been left blank so as to eliminate errors, confusion and updates.





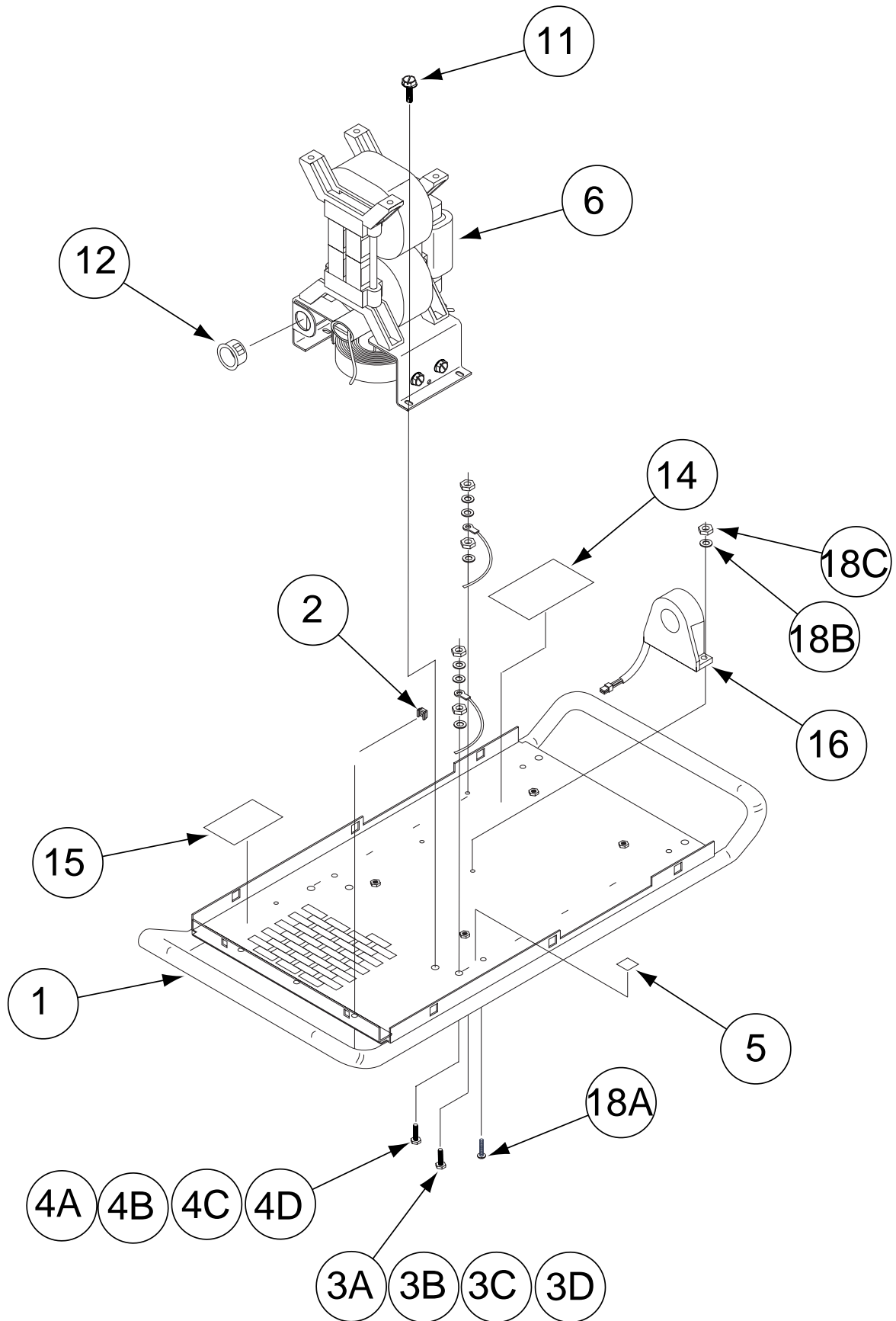
# NOTES

---

EX350i



# Base Assembly



EX350i

2-29-2000



# Indicates a change this printing.

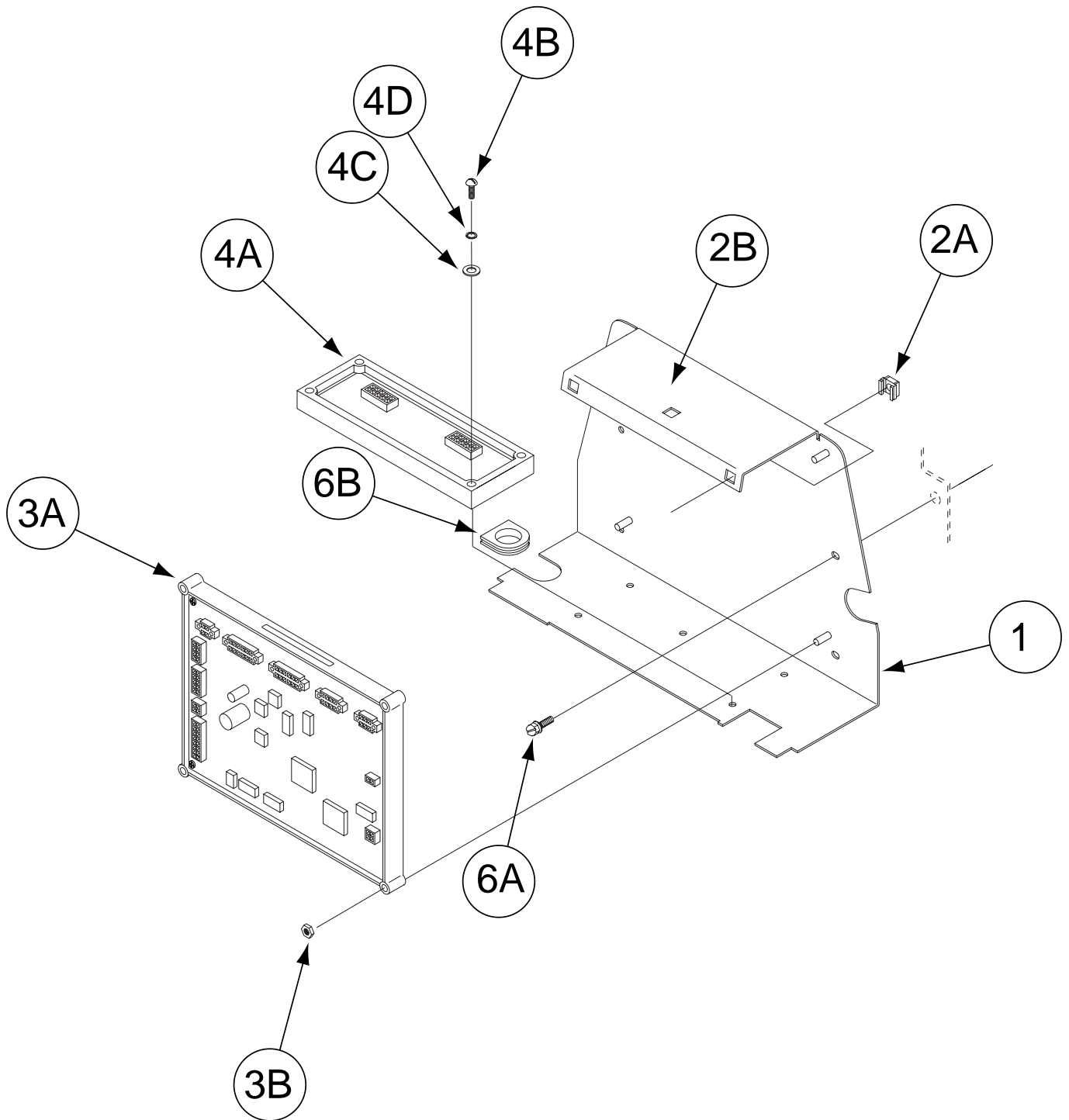
Use only the parts marked "x" in the column under the heading number called for in the model index page.

Recommended Spare Parts are Highlighted in Bold

ITEM	DESCRIPTION	PART NO.	QTY.	1	2	3	4	5	6	7	8	9
1	Base Welded Assembly	M19693	1	X	•							
1	Base Welded Assembly	M19347	1	•	X							
2	Nut Retainer	T10097-4	8	X	X							
3A	Thread Forming Screw	S9225-36	1	X	X							
3B	Plain Washer	S9262-27	2	X	X							
3C	Hex Nut	CF000010	2	X	X							
3D	Lock Washer	E106A-1	1	X	X							
3E	Lock Washer (Not Shown)	T9695-1	1	X	X							
4A	Thread Forming Screw	S9225-17	1	X	X							
4B	Plain Washer	S9262-98	2	X	X							
4C	Hex Nut	CF000017	2	X	X							
4D	Lock Washer	E106A-2	1	X	X							
4E	Lock Washer (Not Shown)	T9695-17	1	X	X							
5	Decal, Earth Ground (Supplied w/Nameplate)	L11186-8	1	X	X							
6	Transformer & Choke Assembly, Includes:	L11509	1	X	•							
6	Transformer & Choke Assembly, Includes:	L11097	1	•	X							
11	Thread Forming Screw	S9225-8	3	X	X							
12	Grommet	T12380-4	2	X	X							
13	Flex Lead (Not Shown)	M14277-41	1	X	X							
14	E2521/1-.010-3.00-5.00	CI001446	1	X	X							
15	E2521/1-.010-2-25-3.00	CI001142	1	X	X							
16	<b>Current Transducer</b>	<b>S18504-2</b>	<b>1</b>	<b>X</b>	<b>X</b>							
17	Plug & Lead Assembly (P21 & P90) (Not Shown)	M19472	1	X	X							
18A	Thread Forming Screw	S9225-52	2	X	X							
18B	Lock Washer	T9695-3	2	X	X							
18C	#8-32 Hex Nut	CF000042	2	X	X							



# Control Box Assembly



# Indicates a change this printing.

Use only the parts marked "x" in the column under the heading number called for in the model index page.

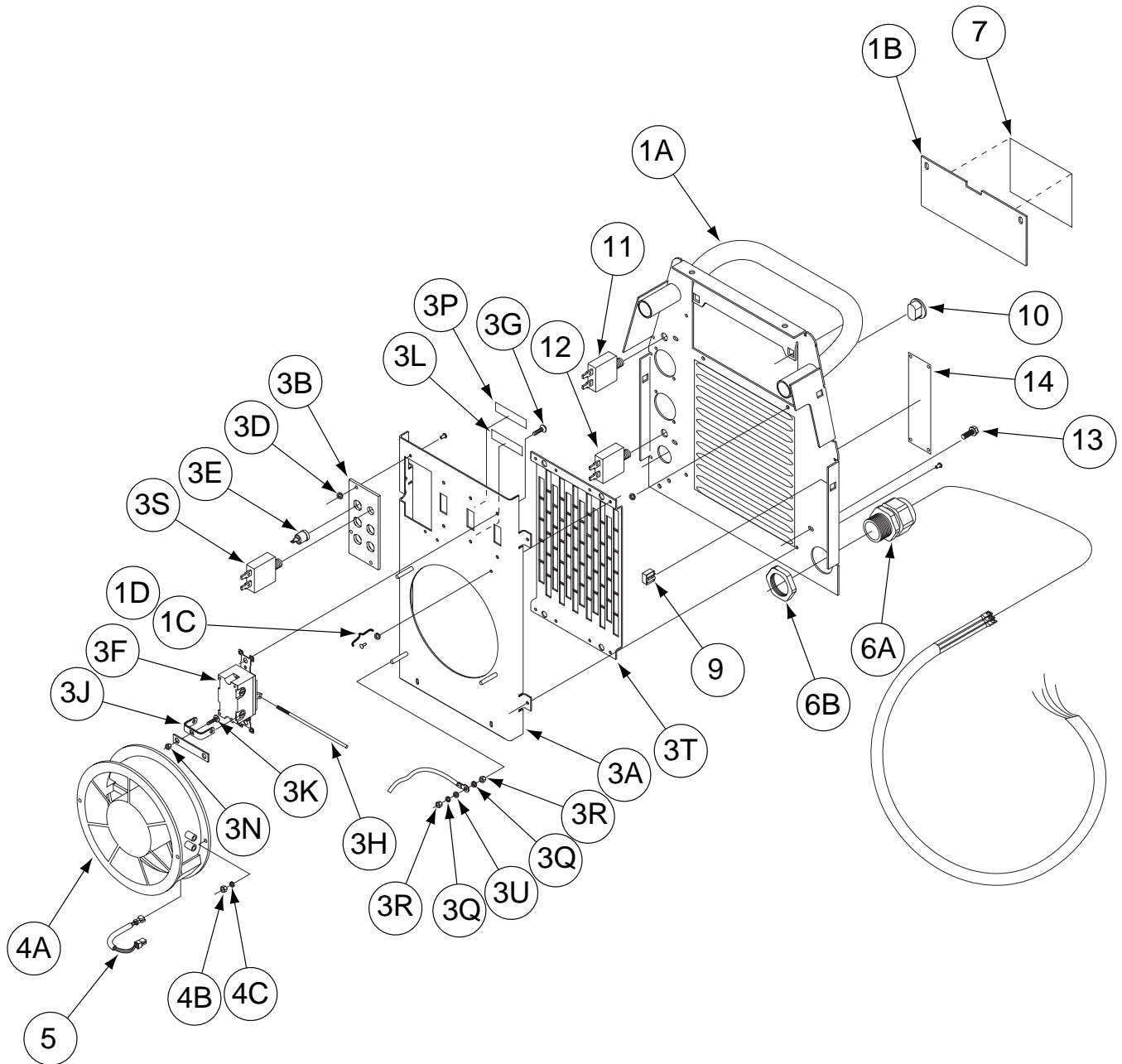
**Recommended Spare Parts are Highlighted in Bold**

ITEM	DESCRIPTION	PART NO.	QTY.	1	2	3	4	5	6	7	8	9
1	Control Box	M19695	1	X								
2A	Nut Retainer	T10097-4	3	X								
2B	Control Box Top	M19549	1	X								
2C	Self Tapping Screw (Not Shown)	S8053-65	2	X								
<b>3A</b>	<b>Control P.C. Board Assembly</b>	<b>S24832-[ ]</b>	<b>1</b>	<b>X</b>								
3B	Hex Lock Nut	T9187-13	4	X								
<b>4A</b>	<b>Remote P.C. Board Assembly</b>	<b>L11109-[ ]</b>	<b>1</b>	<b>X</b>								
4B	#10-24 x 1.25 Round Head Screw	CF000149	4	X								
4C	Plain Washer	S9262-27	4	X								
4D	Lock Washer	E106A-1	4	X								
6A	Self Tapping Screw	CF000371	4	X								
6B	Grommet	S18543-4	1	X								
6C	Grommet (Not Shown)	T12380-3	1	X								

- Note: When ordering new printed circuit boards indicate the dash number [ ] of the "Old" board that is to be replaced. This will aid Lincoln in supplying the correct and latest board along with any necessary jumpers or adapters. The dash number brackets [ ] have purposely been left blank so as to eliminate errors, confusion and updates.



# Case Back Assembly



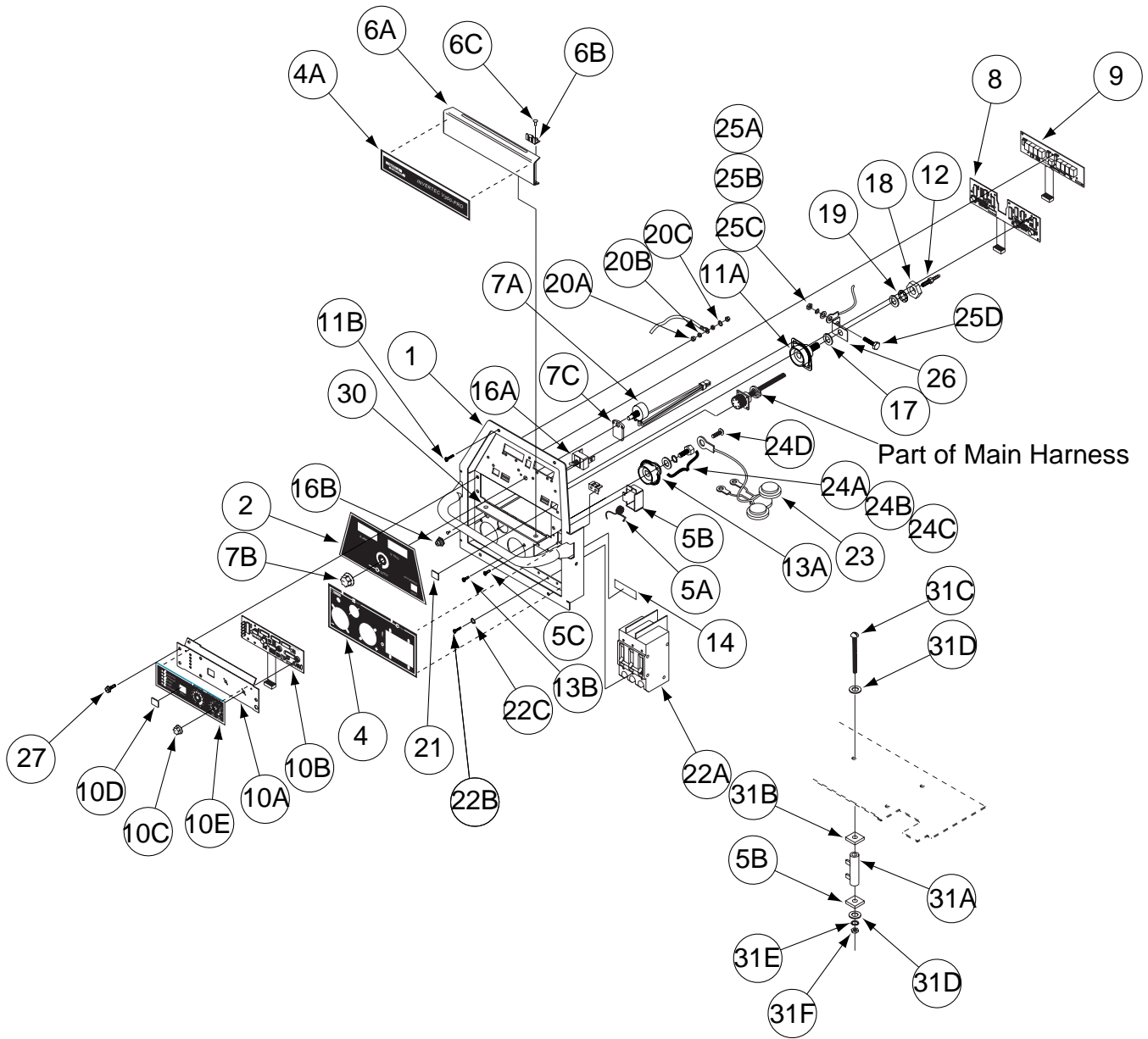
# Indicates a change this printing.

Use only the parts marked "x" in the column under the heading number called for in the model index page.

Recommended Spare Parts are Highlighted in Bold

ITEM	DESCRIPTION	PART NO.	QTY.	1	2	3	4	5	6	7	8	9
1	Case Back Riveted Assembly, Includes:	M19353-1	1	X								
1A	Case Back Welded Assembly	M19355	1	X								
1B	Access Door	S24576	1	X								
1C	Rivet	T9701-3	2	X								
1D	Plain Washer	S9262-39	2	X								
2A	Stud (Not Shown)	S24815-1	2	X								
2B	Sealing Washer (Not Shown)	S24816-1	2	X								
2C	Ejector Spring (Not Shown)	S24817-1	2	X								
2D	Nylon Wear Washer (Not Shown)	S24818-1	2	X								
2E	Retainer (Not Shown)	S24819-1	2	X								
2F	Receptical (Not Shown)	S24820-1	2	X								
3	Fan Shroud Assembly, Includes:	L11118-1	1	X								
3A	Fan Shroud	M19354	1	X								
3B	Reconnect Panel Spacer	S24908	2	X								
3D	Plain Washer	S9262-27	2	X								
<b>3E</b>	<b>Receptacle</b>	<b>T14530-1</b>	<b>5</b>	<b>X</b>								
<b>3F</b>	<b>Line Switch</b>	<b>S20456</b>	<b>3</b>	<b>X</b>								
3G	#6-32 x .375 Phillips Head Screw	CF000337	6	X								
3H	Switch Pin	S20322-1	1	X								
3J	Reconnect Bus Bar	S20360	6	X								
3K	Carriage Bolt	T11827-46	6	X								
3L	Decal 200-230 Volt (Supplied with Nameplate)	L11106-6	1	X								
3M	Lead, Flat Copper (Not Shown)	S11012-50	2	X								
3N	#10-24 Hex Nut-1427	CF000010	6	X								
3P	Decal 380-575 Volt (Supplied with Nameplate)	L11106-7	1	X								
3Q	Lock Washer	T4291-A	1	X								
3U	Plain Washer	S9262-3	2	X								
3R	#10-32 Hex Nut	CF000042	2	X								
<b>3S</b>	<b>Circuit Breaker (2 Amp)</b>	<b>T12287-25</b>	<b>1</b>	<b>X</b>								
3T	Louver Guard	M19111	1	X								
3U	Plain Washer	S9262-3	2	X								
3W	Rivet (Not Shown)	T9701-3	4	X								
3X	Plain Washer (Not Shown)	S9262-39	4	X								
<b>4A</b>	<b>Fan</b>	<b>M19076-1</b>	<b>1</b>	<b>X</b>								
4B	#8-32 Hex Nut	CF000042	2	X								
4C	Lock Washer	T9695-3	2	X								
5	Plug & Lead Assembly	S18250-643	1	X								
6A	Box Connector	S19999	1	X								
6B	Conduit Nut	T14370-3	1	X								
7	Warning Decal	S24724	1	X								
9	Nut Retainer	T10097-4	6	X								
10	Plug Button	T10397-3	1	X								
<b>11</b>	<b>Circuit Breaker (6Amp)</b>	<b>T12287-1</b>	<b>1</b>	<b>X</b>								
<b>12</b>	<b>Circuit Breaker (2Amp)</b>	<b>T12287-14</b>	<b>1</b>	<b>X</b>								
13	#10-24 x .50 Hex Head Cap Screw	CF000371	4	X								
14	Rear Nameplate	S24579	1	X								
15A	Harness Assembly (Not Shown) (Connectors included)	G3815	1	X								
15B	Self Tapping Screw (Not Shown)	S8025-96	10	X								
15C	Cable Connector Cap (Not Shown) (Small)	S17062-2	1	X								
15D	Cable Connector Cap (Not Shown) (Large)	S17062-3										

# Case Front Assembly





# Indicates a change this printing.

Use only the parts marked "x" in the column under the heading number called for in the model index page.

**Recommended Spare Parts are Highlighted in Bold**

ITEM	DESCRIPTION	PART NO.	QTY.	1	2	3	4	5	6	7	8	9
1	Case Front Welded Assembly	M19351	1	X								
2	Nameplate (L11186-1)	L11186	1	X								
4	Nameplate (L11186-3)	L11186	1	X								
4A	Nameplate (L11186-4)	L11186	1	X								
5A	Spring	S24049A	1	X								
5B	Spring Box	M19469	1	X								
5C	Self Tapping Screw	S8025-96	2	X								
6A	Case Front Door	M19460-1	1	X								
6B	Mounting Bracket	S24049-B	1	X								
6C	Rivet	T12584-4	4	X								
7A	Plug & Lead, Control Potentiometer	S18250-645	1	X								
7B	Knob	T10491	1	X								
7C	Potentiometer Spacer	S18250	1	X								
<b>8</b>	<b>Status P.C. Board Assembly</b>	<b>L11107-[ ]</b>	<b>1</b>	<b>X</b>								
<b>9</b>	<b>Standard Display Board Assembly</b>	<b>L11130-[ ]</b>	<b>1</b>	<b>X</b>								
10	Mode Panel Assembly, Includes:	M19346-1	1	X								
10A	Mode Panel Welded Assembly	S24644-1	1	X								
<b>10B</b>	<b>Mode Select P.C. Board Assembly</b>	<b>L11110-[ ]</b>	<b>1</b>	<b>X</b>								
10C	Knob	T13639-5	1	X								
10D	Button Cover	S23055	1	X								
10E	Nameplate (L11186-2)	L11186	1	X								
11A	Output Terminal Molding	M13896-7	1	X								
11B	#10-24 x .50 Hex Head Cap Screw	CF000371	3	X								
11C	Self Tapping Screw (Not Shown)	S9225-63	2	X								
12	Barbed Hose Fitting	T14557-8	1	X								
13A	Output Terminal	M13896-3	1	X								
13B	Self Tapping Screw	S9225-63	2	X								
14	Decal (Supplied w/Nameplate)	L11186-5	1	X								
<b>16A</b>	<b>Toggle Switch</b>	<b>T13562</b>	<b>1</b>	<b>X</b>								
16B	Toggle Boot	S22061-4	1	X								
17	Plain Washer	S9262-41	2	X								
18	5/8-11 Hex Nut	CF000140	1	X								
19	Lock Washer	T9695-16	1	X								
20A	#10-24	CF000010	2	X								
20B	Plain Washer	S9262-27	2	X								
20C	Lock Washer	E106A-1	1	X								
21	Button Cover	S23055	2	X								
<b>22A</b>	<b>Breaker Switch</b>	<b>M19234</b>	<b>1</b>	<b>X</b>								
22B	#6-32 x .375 Phillips Head Screw	CF000337	6	X								
22C	Lock Washer	E106A-13	6	X								
22D	Input Lead Assembly (Not Shown)	S18573-9	1	X								
23	Noise Suppressor Assembly	S24685	1	X								
24A	Terminal Screw	T8930-4	1	X								
24B	Plain Washer	S9262-1	1	X								
24C	Lock Washer	E106A-15	1	X								
24D	Sems Screw	T10082-4	1	X								
25A	Lock Washer	E106A-14	1	X								
25B	Plain Washer	S9262-121	1	X								
25C	5/16-18 Hex Nut	CF000029	1	X								
25D	5/16-18 x 1.00 Hex Head Cap Screw	CF000062	1	X								



# Indicates a change this printing.

Use only the parts marked "x" in the column under the heading number called for in the model index page.

**Recommended Spare Parts are Highlighted in Bold**

ITEM	DESCRIPTION	PART NO.	QTY.	1	2	3	4	5	6	7	8	9
26	Rectifier Bracket Arm	T11655-8	1	X								
27	10-24 x .50 Hex Head Cap Screw	CF000371	4	X								
28	Snap-Top Standoff	S20514-2	4	X								
29	1/4 x 20 Self Clinching Stud	S19110-6	2	X								
30	Hinge	S21250-11	1	X								
31A	Resistor	S10404-76	1	X								
31B	Insulation	T4479-A	2	X								
31C	#10-24 x 3.00 Round Head Screw	CF000009	1	X								
31D	Plain Washer	S9262-27	2	X								
31E	Lock Washer	E106-A1	1	X								
31F	#10-24 Hex Nut	CF000010	1	X								

Note: When ordering new printed circuit boards indicate the dash number [ ] of the "Old" board that is to be replaced. This will aid Lincoln in supplying the correct and latest board along with any necessary jumpers or adapters. The dash number brackets [ ] have purposely been left blank so as to eliminate errors, confusion and updates.



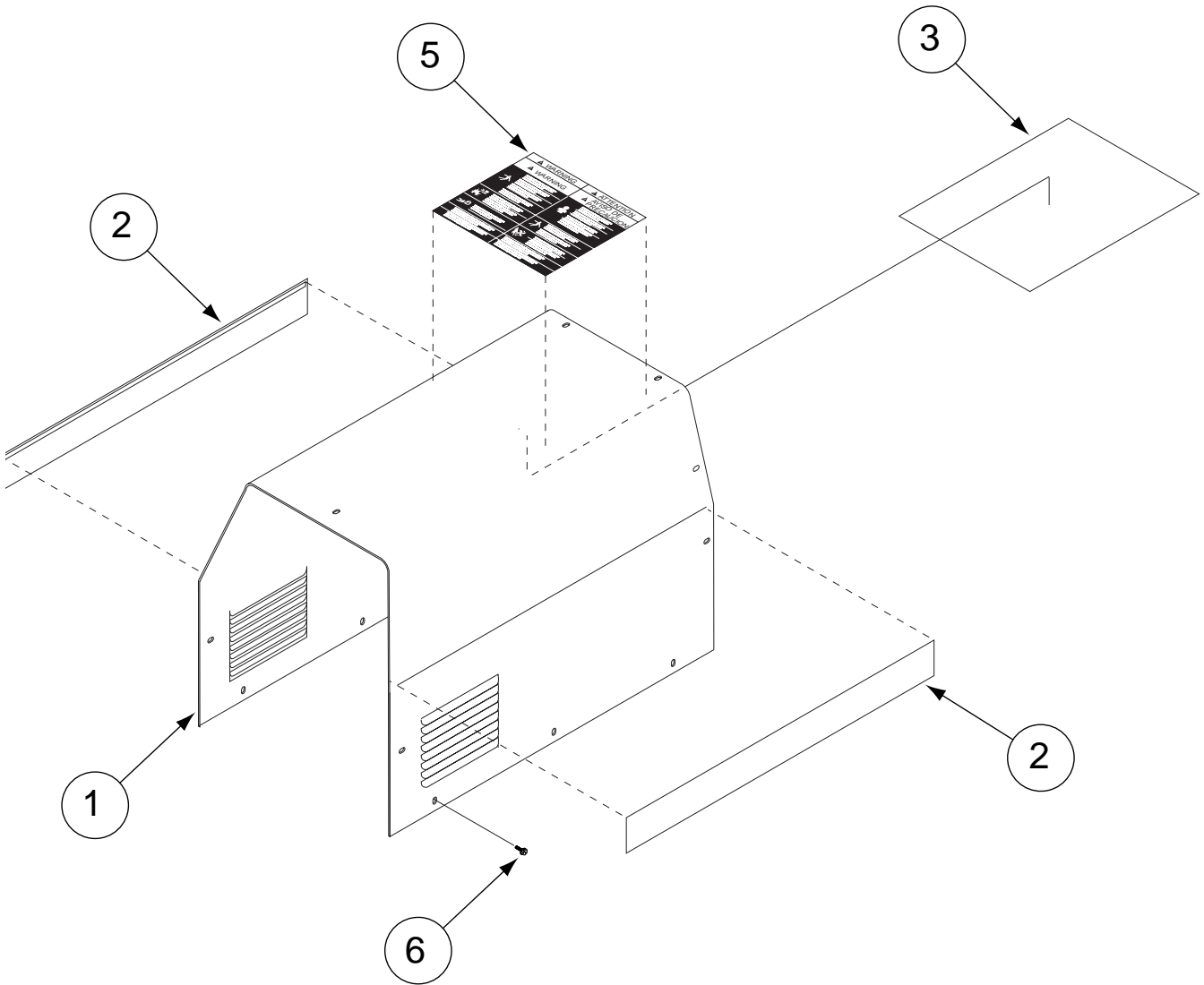
# NOTES

---

EX350i



# Wraparound Assembly



# Indicates a change this printing.

Use only the parts marked "x" in the column under the heading number called for in the model index page.

**Recommended Spare Parts are Highlighted in Bold**

ITEM	DESCRIPTION	PART NO.	QTY.	1	2	3	4	5	6	7	8	9
1	Wraparound	L11511	1	X	•							
1	Wraparound	L11464	1	•	X							
2	Side Decal (Right & Left)	L11187	1	X	X							
3	Wiring Diagram	G3847	1	X	•							
3	Wiring Diagram	G3810	1	•	X							
5	Warning Decal	L8064-1	1	X	X							
6	10 x 24 x .50 Hex Head Cap Screw	S24739-2	15	X	X							



# NOTES

---

EX350i

