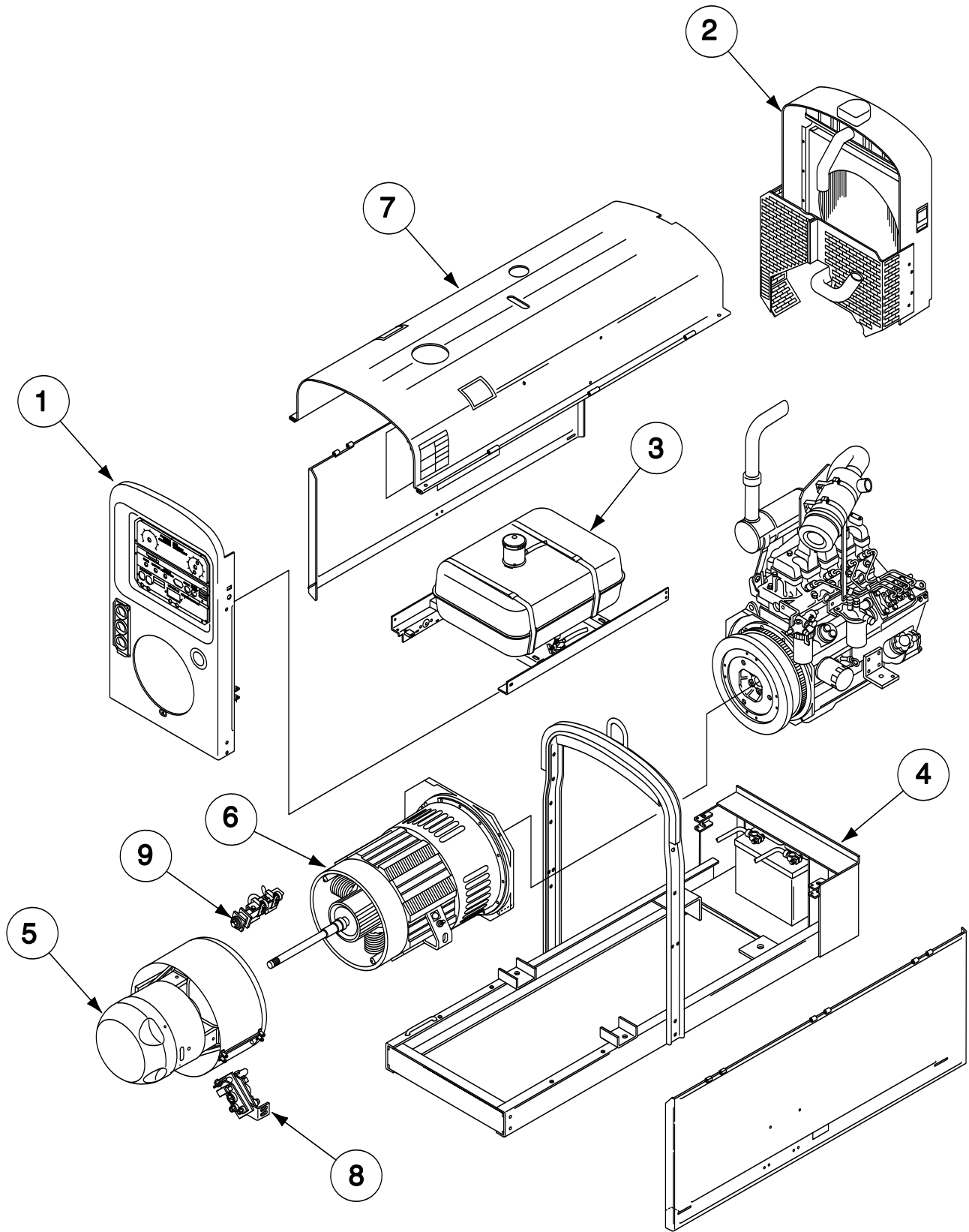


PARTS LIST FOR
D300K 3+3 KUBOTA

Red-D-Arc
Welderentals®

ILLUSTRATION OF SUB-ASSEMBLIES



D300K 3+3 KUBOTA

For Codes: C1/056/10156,10567,10636,10956, 11214, 11488 & 11549

Do Not use this Parts List for a machine if its code number is not listed. Contact the Service Department for any code numbers not listed.

Use the Illustration of Sub-Assemblies page and the table below to determine which sub assembly page and column the desired part is located on for your particular code machine.





Sub Assembly Item No. ↔		1	2	3	4	5	6	7	8
SUB ASSEMBLY PAGE NAME ↔	Miscellaneous Items	Case Front Assembly	Radiator Assembly	Fuel Tank Assembly	Base & Lift Bale Assembly	Welding Generator & Coupling (1 of 2)	Welding Generator & Coupling (2 of 2)	Roof & Doors	Alternator Brush Holder
PAGE NO. ↔	P-485-B	P-485-C	P-485-D	P-485-E	P-485-F	P-485-G	P-485-H	P-485-J	P-485-K
CODE NO. ↓									
C1/056/10156	1	2	1	1	2	1	1	1	1
10567	1	2	1	1	2	1	1	1	1
10636	1	2	1	1	2	1	1	1	1
10956	1	1	1	1	1	1	1	1	1
11214	2	1	1	2	1	1	1	1	1
11488	3	3	2	2	1	1	1	1	1
11549	4	4	3	3	1	2	1	1	1

D300K 3+3 KUBOTA

For Codes: C1/056/10156,10567,10636,10956, 11214, 11488 & 11549

Do Not use this Parts List for a machine if its code number is not listed. Contact the Service Department for any code numbers not listed.

Use the Illustration of Sub-Assemblies page and the table below to determine which sub assembly page and column the desired part is located on for your particular code machine.

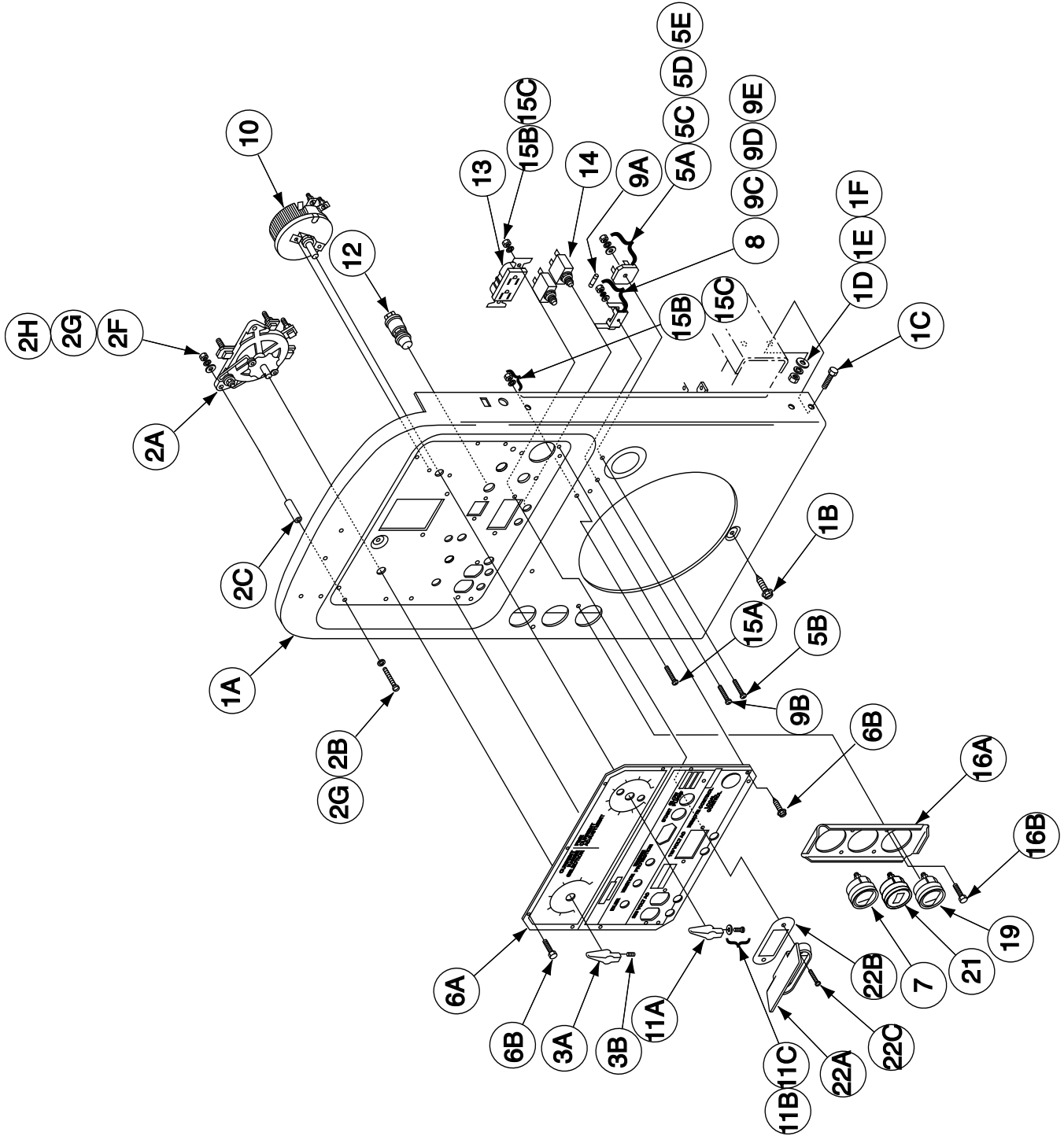
 Sub Assembly Item No.	9								
SUB ASSEMBLY PAGE NAME 	Generator Brush Holder	Cross Reference List							
PAGE NO. 	P-485-L	P-485-M							
CODE NO. 									
C1/056/10156	1	1							
10567	1	1							
10636	1	1							
10956	1	1							
11214	1	1							
11488	1	1							
11549	1	1							

Indicates a change this printing.

Use only the parts marked "x" in the column under the heading number called for in the model index page.

DESCRIPTION	PART NO.	QTY.	1	2	3	4	5	6	7	8	9
Armature Specification	FJW27.6G	1	X	X	X	X					
Alternator Armature Spec.	ALT214-3A	1	X	X	X	X					
Plug & Lead Assembly (P10)	S14165-462	1	X	X	X	•					
Plug & Lead Assembly (P10)	S14165-472	1	•	•	•	X					
Plug & Lead Assembly (J5)	S14165-468	1	X	X	X	•					
Plug & Lead Assembly (J5)	S14165-473	1	•	•	•	X					
Engine Mounting Ref.	M8859-93	1	X	X	X	X					
Air Filter	M19618-43 Ω	1	X	X	X	X					
Air Filter Mounting Bracket	M19618-44 Ω	1	X	X	X	X					
Rubber Pad	M19618-45 Ω	1	X	X	X	X					
Lock Washer	M19618-46 Ω	2	X	X	X	X					
Bolt	M19618-47 Ω	2	X	X	X	X					
Air Filter Intake Hose Clamp	M19618-51 Ω	2	X	X	X	X					
Air Intake Hose	M19618-50 Ω	1	X	X	X	X					
Muffler	M19618-64 Ω	1	X	X	X	X					
Gasket	M19618-63 Ω	1	X	X	X	X					
Bolt	M19618-62 Ω	4	X	X	X	X					
Oil Pressure Switch	S14446	1	X	X	X	X					
45° Street Elbow	S25853	1	X	X	X	X					
Engine Assembly	M19618-38 Ω	1	X	•	•	•					
Engine Assembly	M19618-75 Ω	1	•	X	•	•					
Engine Assembly	M19618-76 Ω	1	•	•	X	X					
Engine Shutoff Rod	S25705	1	X	X	•	•					
Engine Shutoff Rod	S27210	1	•	•	X	X					
Engine Shutoff Spring	S27402	1	•	•	X	X					
Temperature Sensor (Supplied w/Engine)	M19618-81 Ω	1	•	•	X	X					
Temperature Sender	S27248	1	•	•	X	X					
1/4-1/8 Fitting	T15138	1	•	•	X	X					
Knob	T10889	1	X	X	X	X					
Bushing	T12380-6	1	X	X	X	X					
Fuel Solenoid	M19618-6 Ω	1	X	X	•	•					
Fuel Solenoid Bracket	M19618-7 Ω	1	X	X	•	•					
Fuel Filter	M19618-13 Ω	1	X	X	X	X					
Wiring Harness	G6227	1	•	•	X	X					

Case Front Assembly



Indicates a change this printing.

Use only the parts marked "x" in the column under the heading number called for in the model index page.

ITEM	DESCRIPTION	PART NO.	QTY.	1	2	3	4	5	6	7	8	9
	Case Front Assembly (Standard), Includes:	G4491	1	X	•	•	•					
	Case Front Assembly, Includes:	NA	1	•	X	•	•					
	Case Front Assembly (Standard), Includes:	G6098	1	•	•	X	•					
	Case Front Assembly (Standard), Includes:	G6928	1	•	•	•	X					
1A	Front Panel Welded Assembly	L8703-3	1	X	X	•	•					
1A	Front Panel Welded Assembly	L8703-11	1	•	•	X	X					
1B	Self Tapping Screw	S8025-79	1	X	X	X	X					
1C	3/8-16 x 1.00 HHCS	CF000019	4	X	X	X	X					
1D	Plain Washer	S9262-120	4	X	X	X	X					
1E	Lock Washer	E106A-4	4	X	X	X	X					
1F	3/8-16 HN	CF000067	4	X	X	X	X					
2A	Selector Switch Assembly	M13335	1	X	X	X	X					
2B	#10-24 x 1.75 RHS	CF000127	1	X	X	X	X					
2C	Spacer	S10918-60	1	X	X	X	X					
2F	Plain Washer	S9262-27	2	X	X	X	X					
2G	Lock Washer	T9695-1	4	X	X	X	X					
2H	#10-24 HN	CF000010	2	X	X	X	X					
2J	#10-24 x 1.50 RHS (Not Shown)	CF000122	1	X	X	X	X					
2K	Spacer (Not Shown)	S10918-69	1	X	X	X	X					
3A	Handle	M13989-1	1	X	X	X	X					
3B	Self Tapping Screw	S8025-22	1	X	X	X	X					
5A	Diode Bridge	T13637	As Req	X	X	X	X					
5B	#8-32 x .875 RHS	CF000059	As Req	X	X	X	X					
5C	Plain Washer	S9262-3	As Req	X	X	X	X					
5D	Lock Washer	T4291-A	As Req	X	X	X	X					
5E	#8-32 HN	CF000042	As Req	X	X	X	X					
6A	Nameplate	M19618-73 Ω	1	X	X	•	•					
6A	Nameplate (Upper)	M19618-84 Ω	1	•	•	X	X					
6B	Self Tapping Screw	S8025-92	2	X	X	•	•					
6B	Self Tapping Screw	S8025-92	4	•	•	X	X					
6C	Nameplate (Bottom) (Not Shown)	M19618-77 Ω	1	•	•	X	X					
6D	Self Tapping Screw (Not Shown)	S8025-92	4	•	•	X	X					
7	Ammeter	S7514-4	1	X	X	X	X					
8	Fuse Holder	T15011-1	1	X	X	X	X					
9A	Fuse	T10728-8	1	X	X	X	X					
9B	#4-40 x .375 RHS	CF000001	1	X	X	X	X					
9C	Plain Washer	S9262-39	1	X	X	X	X					
9D	Lock Washer	T4291-B	1	X	X	X	X					
9E	#4-40 HN	CF000002	1	X	X	X	X					
10	Rheostat	M5090-C	1	X	X	X	X					
11A	Rheostat Handle	S16664-13	1	X	X	X	X					
11B	1/4-20 x .375 RHS	CF000107	2	X	X	X	X					
11C	Lock Washer	E106A-2	2	X	X	X	X					
12	Starter Switch	M19618-49 Ω	1	X	X	X	X					
13	Receptacle (Duplex GFCI)	S24410	1	X	•	X	X					
13	Receptacle (Duplex)	S20143-1	1	•	X	•	•					
14	Circuit Breaker (20 Amps)	T12287-31	1	X	•	X	X					
14	Circuit Breaker (15 Amps)	T12287-22	2	•	X	•	•					
15A	Thread Forming Screw (Ground Screw)	S9225-36	2	X	X	X	X					
15B	Lock Washer	T9695-1	2	X	X	X	X					
15C	#10-24 HN	CF000010	4	X	X	X	X					
16A	Meter Guard	M16240-2	1	X	X	X	X					

Ω - "Red-D-Arc Supplied"

D300K 3+3 KUBOTA

05-31-2011

NA - Not Available

Red-D-Arc
Welderrentals.

Indicates a change this printing.

Use only the parts marked "x" in the column under the heading number called for in the model index page.

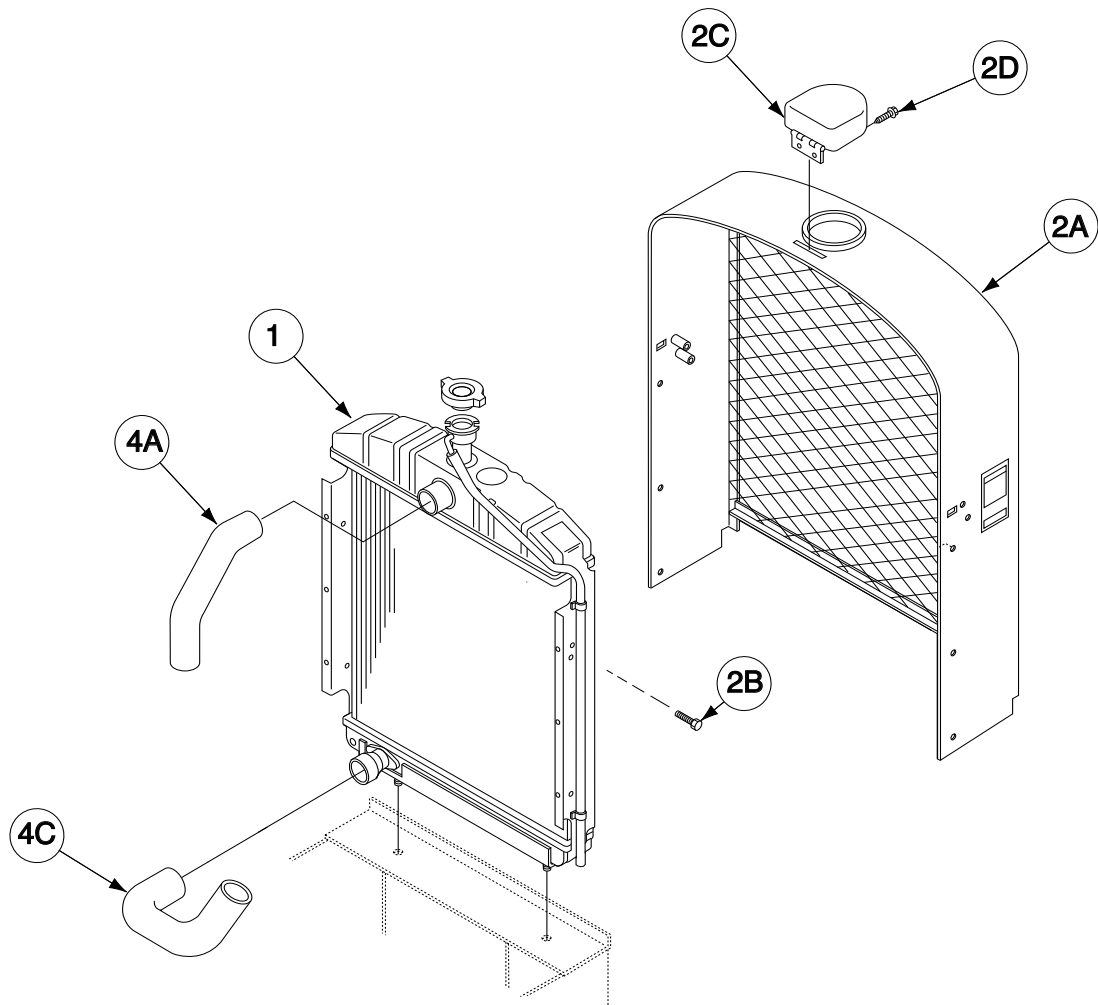
ITEM	DESCRIPTION	PART NO.	QTY.	1	2	3	4	5	6	7	8	9
16B	Self Tapping Screw	S8025-92	2	X	X	X	X					
17A	Copper Lead (Not Shown)	S24652	1	X	X	X	X					
17B	Plain Washer (Not Shown)	S9262-30	1	X	X	X	X					
17C	Lock Washer (Not Shown)	E106A-14	1	X	X	X	X					
17D	5/16-18 HN (Not Shown)	CF000029	1	X	X	X	X					
19	Water Temperature Gauge	M19618-36 Ω	1	X	X	•	•					
20	Murphy Extension Nut (Not Shown)	M19618-37 Ω	1	X	X	•	•					
21	Engine Hour Meter	S17475-5	1	X	X	X	X					
22A	Receptacle Cover	S21316	1	X	•	X	X					
22B	Receptacle Gasket	S21088	1	X	•	X	X					
22C	Thread Forming Screw	S9225-63	2	X	•	X	X					
22D	Speed Nut (Not Shown)	T11525-1	2	X	•	X	X					
23	Hole Plug (9/32) (Not Shown)	T10397-9	2	X	X	•	•					
24	Local Remote Plug Assembly (Not Shown)	S20231	1	X	X	X	X					
25	Water Temperature Gauge (Not Shown)	S25154	1	•	•	X	X					
26A	Engine Control Unit (ECU) (Not Shown)	M19618-79 Ω	1	•	•	X	X					
26B	Plain Washer (Not Shown)	S9262-27	4	•	•	X	X					
26C	Lock Washer	T9695-1	2	•	•	X	X					
26D	#10-24 HN	CF000010	2	•	•	X	X					
26E	Spacer (Not Shown)	S10918-82	2	•	•	X	X					
26F	#10-24 x 3.50 RHS	CF000404	2	•	•	X	X					
27	GFCI Cover (Not Shown)	L13286	1	•	•	X	X					
28	GFCI Mounting Bracket (Not Shown)	S27167	1	•	•	X	X					
29	Receptacle Seal (Not Shown)	S27176	1	•	•	X	X					
30	Thermoplastic Screw (Not Shown)	S24738-3	2	•	•	X	X					

NOTES

D300K 3+3 KUBOTA

**Red-D-Arc
Welderrentals.**

Radiator Assembly

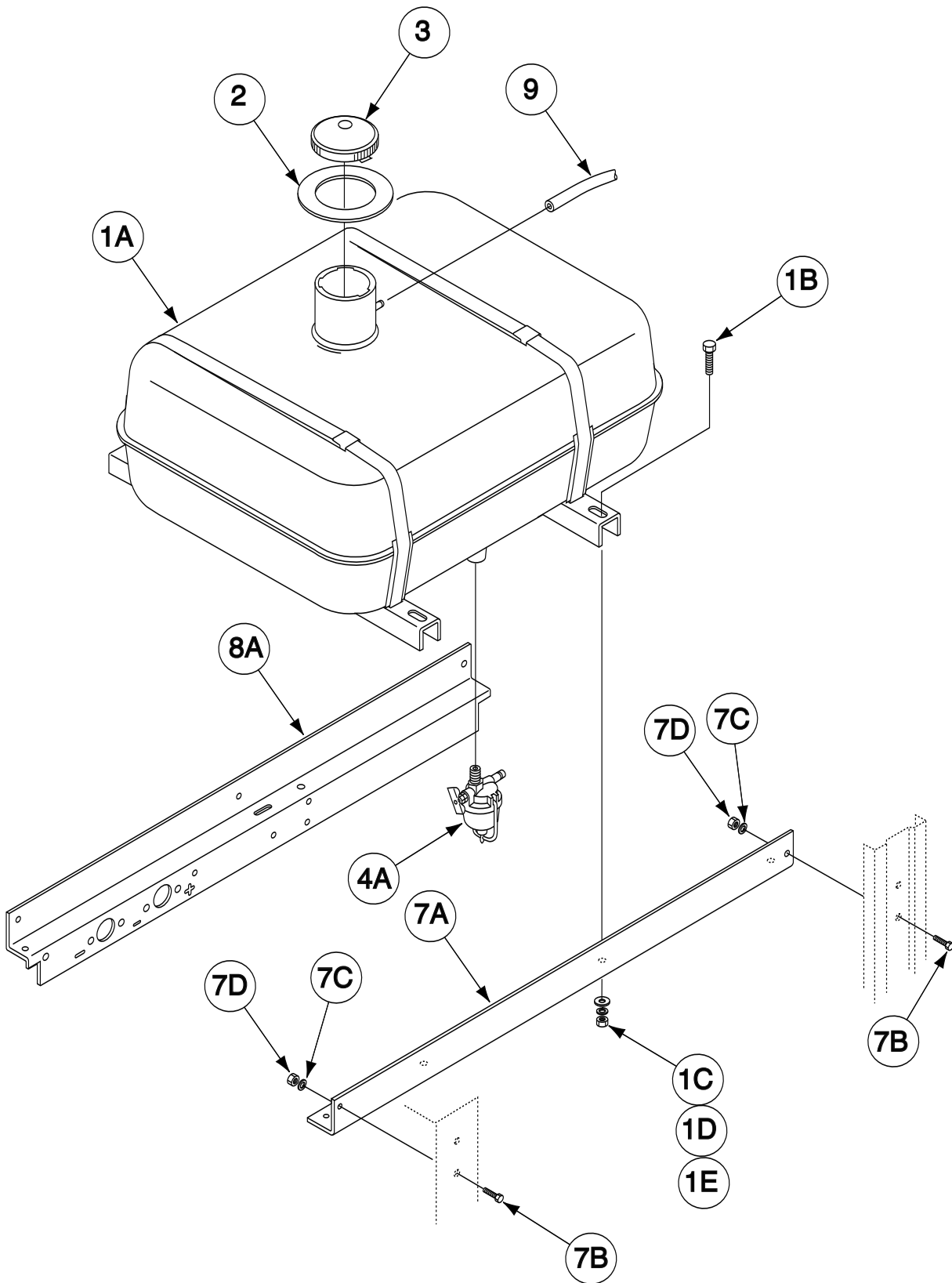


Indicates a change this printing.

Use only the parts marked "x" in the column under the heading number called for in the model index page.

ITEM	DESCRIPTION	PART NO.	QTY.	1	2	3	4	5	6	7	8	9
1	Radiator	M19618-35 Ω	1	X	•	•						
1	Radiator w/Fan Shroud (V1903)	M19618-83 Ω	1	X	•	•						
1	Radiator w/Fan Shroud (V2003)	M19618-82 Ω	1	•	X	X						
2A	Radiator Shell	L5163-3	1	X	X	X						
2B	Thread Forming Screw	S9225-8	4	X	X	X						
2C	Radiator Cap Cover	M8003	1	X	X	X						
2D	Self Tapping Screw	S8025-12	2	X	X	X						
3	Rubber Washer (Not Shown)	T11135-19	2	X	X	X						
4A	Top Radiator Hose	M19618-54 Ω	1	X	X	X						
4B	Clamp (Not Shown)	M19618-55 Ω	4	X	X	•						
4B	Clamp (Not Shown)	M19618-44 Ω	4	•	•	X						
4C	Bottom Radiator Hose	M19518-58 Ω	1	X	X	X						
4D	Clamp (Not Shown)	M19618-55 Ω	4	•	•	X						
5A	Left Finger Guard (Not Shown)	L12127	1	X	•	•						
5A	Left Fan Guard (Not Shown)	L13318	1	•	X	X						
5B	Self Tapping Screw (Not Shown)	S8025-79	3	X	•	•						
5C	Right Fan Guard (Not Shown)	L12131	1	X	•	•						
5C	Right Fan Guard (Not Shown)	L13319	1	•	X	X						
5D	Self Tapping Screw (Not Shown)	S8025-79	3	X	•	•						
5E	Lower Belt Guard (Not Shown)	L13687	1	•	X	X						
5F	M10 x 1.25 (Not Shown)	T14731-49	2	•	X	X						
5G	M8 x 1.25 (Not Shown)	T14731-3	1	•	X	X						
6	Finger Guard Brace (Not Shown)	M20264	1	X	•	•						

Fuel Tank & Mounting

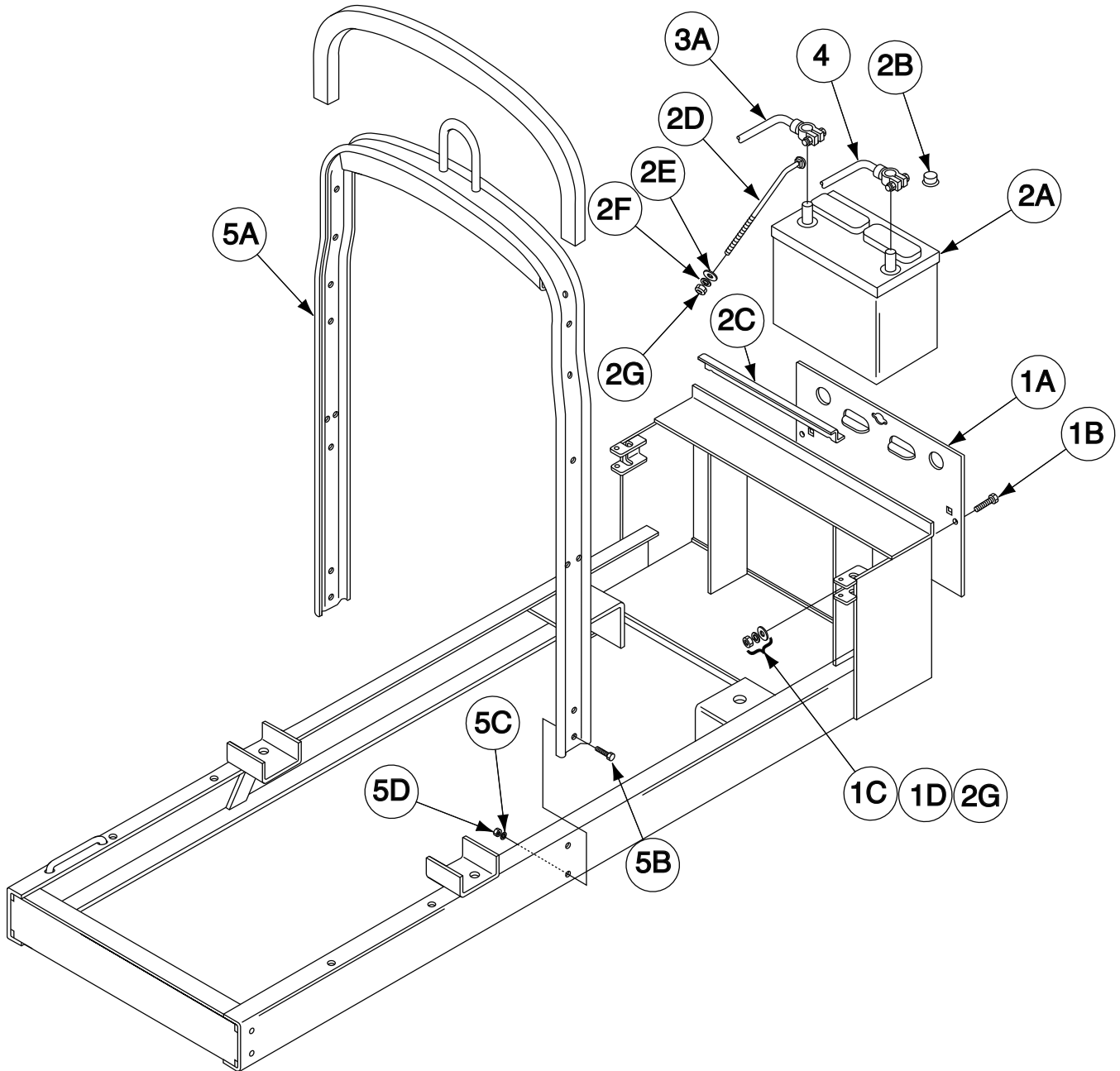


Indicates a change this printing.

Use only the parts marked "x" in the column under the heading number called for in the model index page.

ITEM	DESCRIPTION	PART NO.	QTY.	1	2	3	4	5	6	7	8	9
1A	Fuel Tank Asbly (Steel Tank) (Replaced by Plastic Tank)	L3398-22	1	X	X	•						
1A	Fuel Tank Asbly (Plastic Tank)	L15079	1	X	X	X						
1B	3/8-16 x 2.00 HHCS	CF000071	4	X	X	X						
1C	Plain Washer	S9262-56	8	X	X	X						
1D	Lock Washer	E106A-4	4	X	X	X						
1E	3/8-16 HN	CF000067	4	X	X	X						
2	Gasket (for Steel Tank)	S10437-A	1	X	X	•						
2	Gasket (for Plastic Tank)	S10437-G	1	X	X	X						
3	Fuel Cap (for Steel Tank)	S10149	1	X	X	•						
3	Fuel Cap (for Plastic Tank)	M21278-1	1	X	X	•						
3	Fuel Cap (for Plastic Tank without Gauge)	S20541	1	•	•	X						
4A	Fuel Strainer	S6185	1	X	•	•						
4B	Elbow Fitting (Not Shown)	S25908	1	•	X	•						
5A	Hose Connector (Not Shown)	T13595	1	X	•	•						
5B	Gear Clamp (Not Shown)	S10888-35	2	X	X	X						
7A	Fuel Tank Rail	M12479-1	1	X	X	X						
7B	Thread Forming Screw	S9225-22	2	X	X	X						
7C	Lock Washer	T9860-3	2	X	X	X						
7D	5/16-18 HN	CF000029	2	X	X	X						
7E	Water Separator Bracket (Not Shown)	S25827	1	•	X	X						
7F	Speed Nut (Not Shown)	T11825-5	2	•	X	X						
7G	Thread Forming Screw (Not Shown)	S9228-66	2	•	X	X						
7H	Water Separator (Not Shown)	M19618-74	1	•	X	X						
7J	5/16-18 x 2.75 HHCS (Not Shown)	CF000073	1	•	X	X						
7K	Lock Washer (Not Shown)	E106A-3	2	•	X	X						
7L	5/16-18 HN (Not Shown)	CF000029	1	•	X	X						
7M	Plain Washer (Not Shown)	S9262-121	2	•	X	X						
	Output Panel Asbly, Includes:	M16685-3	1	X	X	X						
8A	Output Rail	M13946-1	1	X	X	X						
8B	Thread Forming Screw (Not Shown)	S9225-22	2	X	X	X						
8C	Lock Washer (Not Shown)	T9860-3	2	X	X	X						
8D	5/16-18 HN (Not Shown)	CF000029	2	X	X	X						
8E	Remote/Local Receptacle Asbly (Not Shown)	M16779-1	1	X	X	X						
8F	Thread Forming Screw (Not Shown)	S9225-8	2	X	X	X						
8G	Output Stud (Not Shown)	M13900	2	X	X	X						
8H	Self Tapping Screw (Not Shown)	S8025-91	4	X	X	X						
8J	Cable Clamp (Not Shown)	T13891	1	X	X	X						
8K	Self Tapping Screw (Not Shown)	S8025-75	1	X	X	X						
9	Fuel Return Line (.1875 ID / .406 OD x 27.00)	T10642-231	1	X	X	X						
10	Fuel Hose (Tank to Separator) (.312 ID/.562ODx10.5)	T10642-86	1	•	X	X						
	Fuel Hose (Separator to Filter) (.312 ID/.562ODx10.5)	T10642-86	1	•	X	X						
	Fuel Hose (Tank to Filter) (.312 ID/.562OD x 26)	T10642-91	1	X	•	•						
	Fuel Hose (Filter to Pump) (.312 ID/.562OD x 16.50)	T10642-187	1	X	X	X						
12A	1/2-13 HJN (Not Shown)	CF000054	1	X	X	X						
12B	Lock Washer (Not Shown)	E106A-15	1	X	X	X						

Base & Lift Bale Assembly

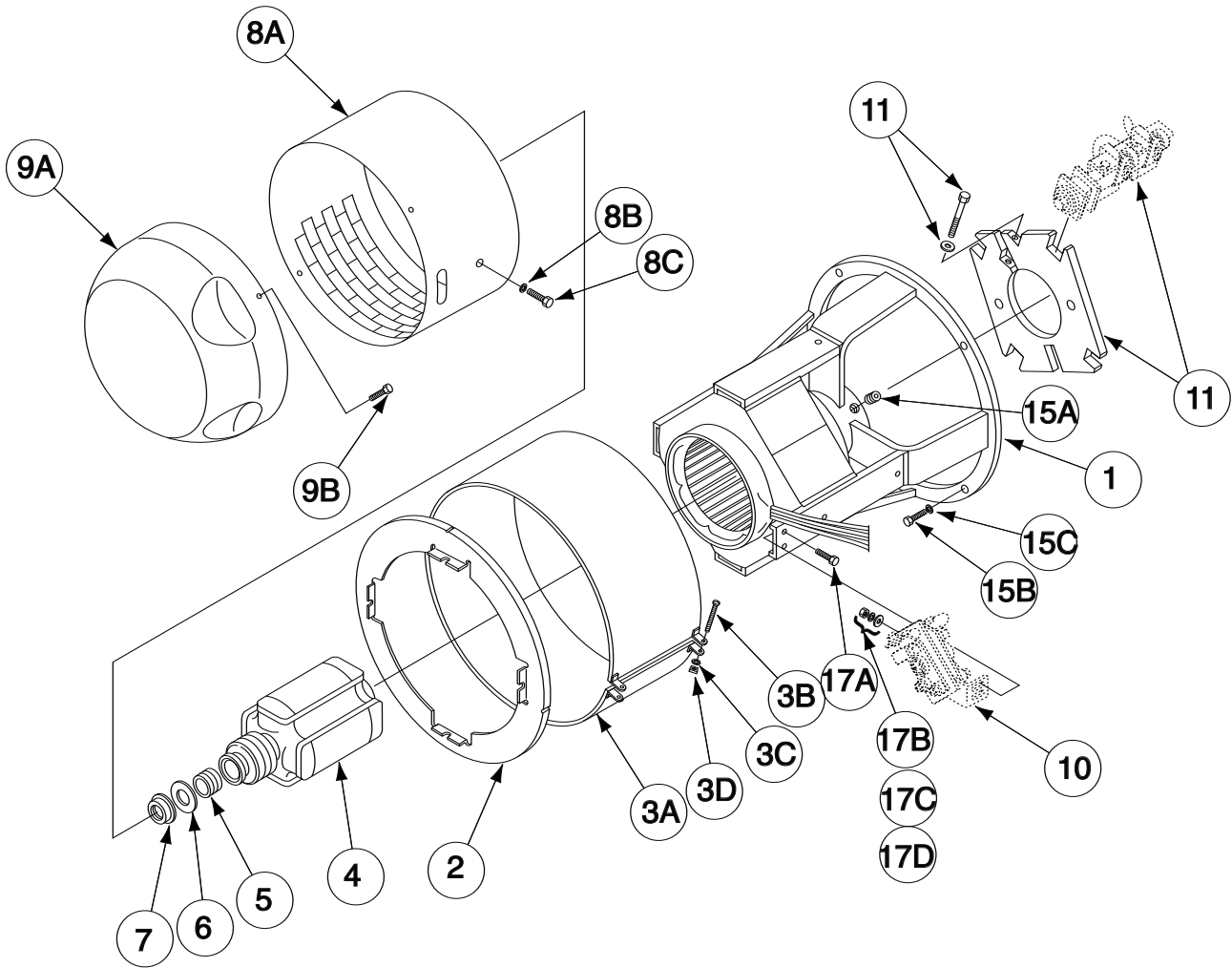


Indicates a change this printing.

Use only the parts marked "x" in the column under the heading number called for in the model index page.

ITEM	DESCRIPTION	PART NO.	QTY.	1	2	3	4	5	6	7	8	9
1	Base Assembly	G2678-1	1	X	•							
1	Base Assembly	N/A	1	•	X							
1A	Battery Mounting Panel	S15639-1	1	X	X							
1B	1/4-20 x .50 HHCS	CF000012	2	X	X							
1C	Lock Washer	E106A-2	2	X	X							
1D	Plain Washer	S9262-23	2	X	X							
2A	Battery (M9399-4)	N/A	1	X	X							
2B	Cap (Insulates Neg. Terminal)	T14654	1	X	X							
2C	Battery Bracket	S12128	1	X	X							
2D	Carriage Bolt	T11888	2	X	X							
2E	Plain Washer	S9262-23	2	X	X							
2F	Lock Washer	E106A-2	2	X	X							
2G	1/4-20 HN	CF000017	2	X	X							
3A	Positive Battery Cable	S8070-29	1	X	•							
3A	Positive Battery Cable	M19618-32 Ω	1	•	X							
4	Negative Battery Cable & Ground Strap	S14922-1	1	X	•							
4	Negative Battery Cable	M19618-33 Ω	1	•	X							
4A	Thread Forming Screw (For Securing Cable & Strap)	S9225-26	2	X	•							
4B	Negative Cable Jumper Cable	M19618-65 Ω	1	•	X							
5A	Lift Bale & Hook Assembly	L9084	1	X	X							
5B	1/2-13 x 1.25 HHCS	T8833-24	4	X	X							
5C	Lock Washer	E106A-5	4	X	X							
5D	1/2-13 HN	CF000027	4	X	X							

Welding Generator & Coupling (1 of 2)

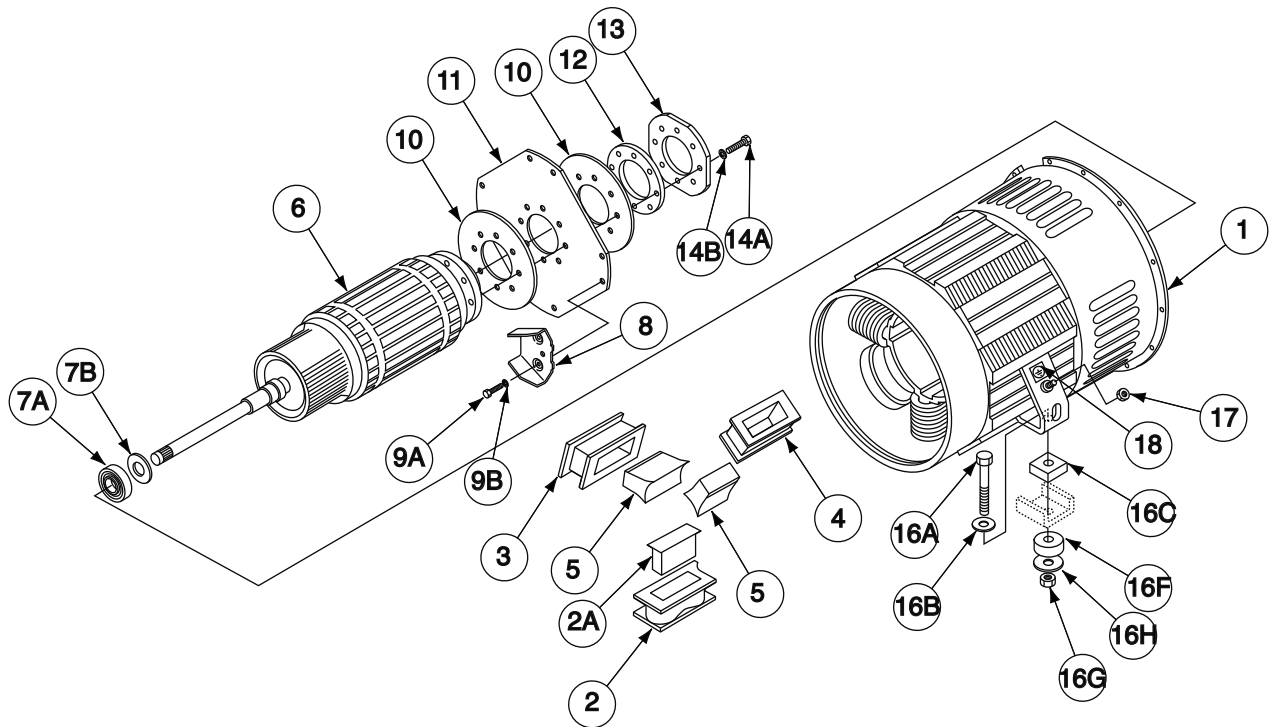


Indicates a change this printing.

Use only the parts marked "x" in the column under the heading number called for in the model index page.

ITEM	DESCRIPTION	PART NO.	QTY.	1	2	3	4	5	6	7	8	9
1	Exciter End Bracket	L6061-5	1	X	X							
2	Baffle	M13683	1	X	X							
2A	Thread Forming Screw (Not Shown)	S9225-8	4	X	X							
2B	Plain Washer (Not Shown)	S9262-23	4	X	X							
2C	Lock Washer (Not Shown)	T9860-6	4	X	X							
3A	Bracket Cover	L3391-46	1	X	X							
3B	1/4-20 x 2.00 RHS	CF000143	2	X	X							
3C	Lock Washer	E106A-2	2	X	X							
3D	Square Nut	CF000232	2	X	X							
4	Rotor Assembly 3.0 KVA Alternator	M13641-4	1	X	X							
5	Armature Sleeve Collar	T14337	1	X	X							
6	Exciter Nut Washer	T7090-1	1	X	X							
7	Exciter Nut	T6225-1	1	X	X							
8A	Exciter Shroud	L8254	1	X	X							
8B	Lock Washer	T9860-6	3	X	X							
8C	Thread Forming Screw	S9225-8	3	X	X							
9A	Blower Shroud	L6129-1	1	X	X							
9B	Self Tapping Screw	S8025-91	4	X	X							
10	Alternator Brush Holder & Bracket	See P-485-K1	1	X	X							
11	Rocker & Brush Holder Assembly	See P-485-L.1	1	X	X							
14	Generator Brush (Not Shown)	T2687	8	X	X							
15A	Pipe Plug	S10780-4	1	X	X							
15B	7/16-14 x 1.50 HHCS	T8833-2	4	X	X							
15C	Lock Washer	E106A-8	4	X	X							
16	Alternator Diode & Heat Sink Assembly, Includes: Diode (Not Shown)	T11976-6	1	X	•							
		T12705-24	1	X	•							
17A	1/4-20 x .75 HHCS	CF000014	2	X	X							
17B	Plain Washer	S9262-23	2	X	X							
17C	Lock Washer	E106A-2	2	X	X							
17D	1/4-20 HN	CF000017	2	X	X							

Welding Generator & Coupling (2 of 2)

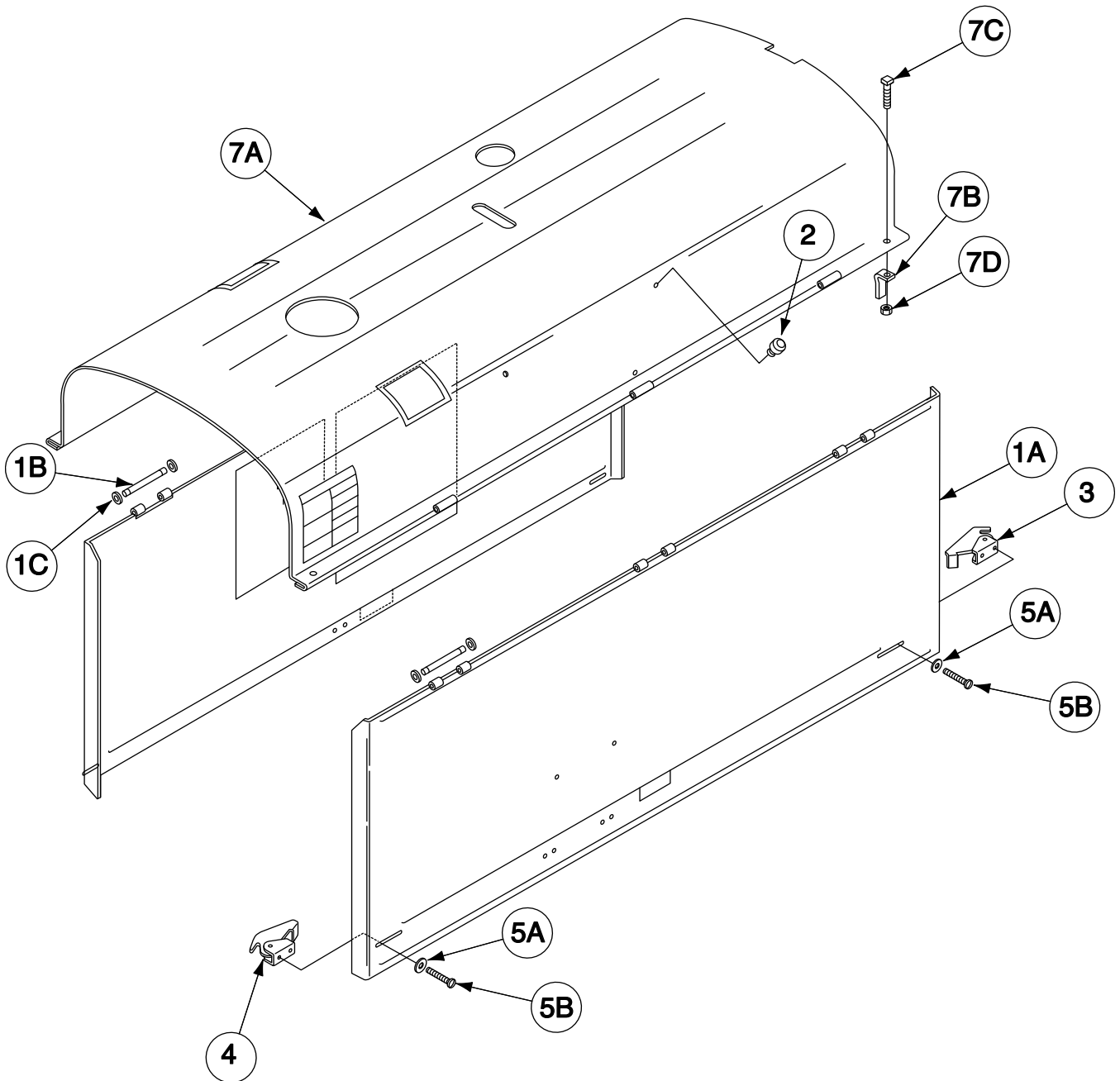


Indicates a change this printing.

Use only the parts marked "x" in the column under the heading number called for in the model index page.

ITEM	DESCRIPTION	PART NO.	QTY.	1	2	3	4	5	6	7	8	9
1	Generator Frame Assembly, Includes: Frame Assembly	L8576-9	1	X								
		L9074-3	1	X								
	Interpole Coil & Pole (Set of 4-3, 6, 9 & 12 O'Clock) Includes:	S12261-21	1	X								
2	Interpole Coil (Set of 4-3, 6, 9 & 12 O'Clock)	S12261-21A	1	X								
2A	Interpole Piece	S12260-6	4	X								
3	Shunt Coils (Top & Bottom)	FJW5-AP	1	X								
4	Series Coil (Top & Bottom)	FJW115-W	1	X								
5	Main Poles	S10745-12	4	X								
6	Armature	M7014-13	1	X								
7A	Bearing	M9300-180	1	X								
7B	Bearing Shoulder Ring	S18541	1	X								
8	Blower Segments (Sold in Set of 4 Only)	M14361	1	X								
9A	7/16-14 x .75 HHCS (Blower Segments to Engine Coupling)	T8833-44	8	X								
9B	Lock Washer	E106A-8	8	X								
10	Disc Backing Plate	S8042	2	X								
11	Coupling Disc	M6730	1	X								
12	Coupling Ring (Inside)	S14233	1	X								
13	Coupling Ring (Outside-Closest to Engine)	S14232	1	X								
14A	7/16-14 x 1.50 HHCS (Coupling Rings to Armature Hub)	T8833-2	8	X								
14B	Lock Washer	E106A-8	8	X								
15A	3/8-16 x 1.00 HHCS (Not Shown)	CF000019	5	X								
15B	Lock Washer (Not Shown)	E106A-16	5	X								
16A	1/2-13 x 2.75 HHCS	CF000123	2	X								
16B	Plain Washer	S9262-1	2	X								
16C	Welder Foot Support Rubber	T8823	2	X								
16E	Mounting Bracket (Not Shown)	S10040-86	2	X								
16F	Rubber Pad	T8822	2	X								
16G	1/2-13 HLN	T9187-4	2	X								
16H	Plain Washer	S9262-5	2	X								
17	3/8-16 HN	CF000067	2	X								
18	Ground Decal	T13260-4	2	X								

Roof & Doors

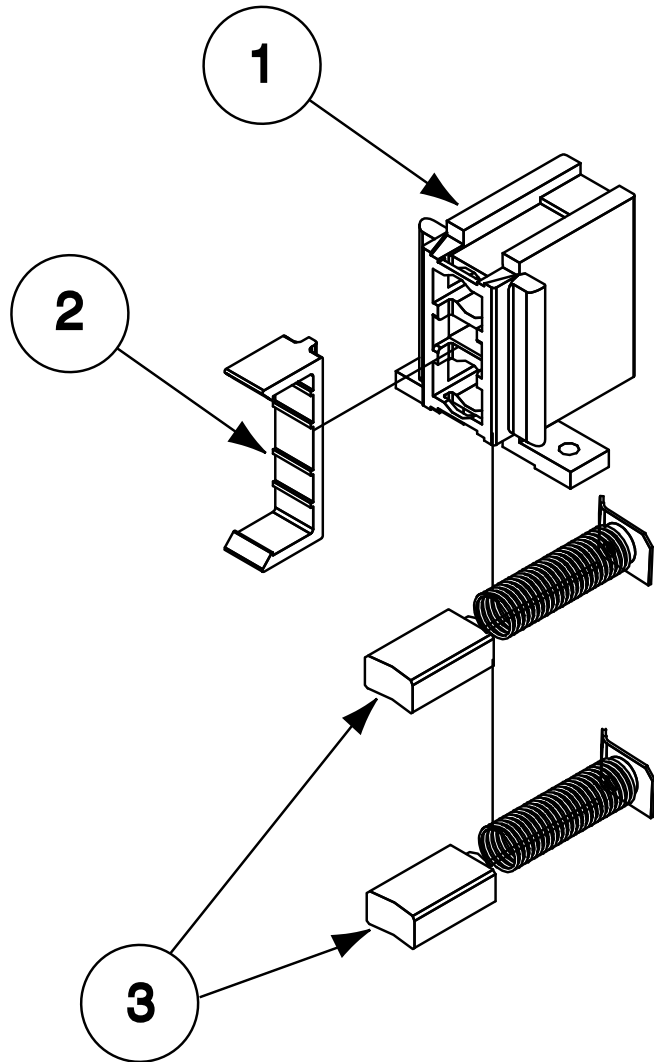


Indicates a change this printing.

Use only the parts marked "x" in the column under the heading number called for in the model index page.

ITEM	DESCRIPTION	PART NO.	QTY.	1	2	3	4	5	6	7	8	9
1A	Door	L6659-8	2	X								
1B	Door Hinge Pin	S20295	6	X								
1C	Retaining Ring	S9776-62	12	X								
2	Door Bumper (Mounts in Roof)	T15154	4	X								
3	Door Hook Assembly	S10656-3	2	X								
4	Door Hook Assembly	S10656-4	2	X								
5A	Door Hook Washer	T10878	4	X								
5B	Self Tapping Screw	S8025-92	8	X								
7A	Roof (Codes 10956, 10636, 11214, 11488 & 11549)	L5193-7	1	X								
7A	Roof (Codes 10567 & C1/056/10156)	L5193-8	1	X								
7B	Roof Mounting Angle	S13593	4	X								
7C	5/16-18 x 1.50 SQHS	CF000258	4	X								
7D	5/16-18 HLN	T9187	4	X								
9	Warning Decal (Not Shown)	S25896-1	1	X								
10	CO Warning Decal (Not Shown)	M21436	1	X								
11	Fuel Warning Decal (Not Shown)	T13086-205	1	X								

Alternator Brush Holder

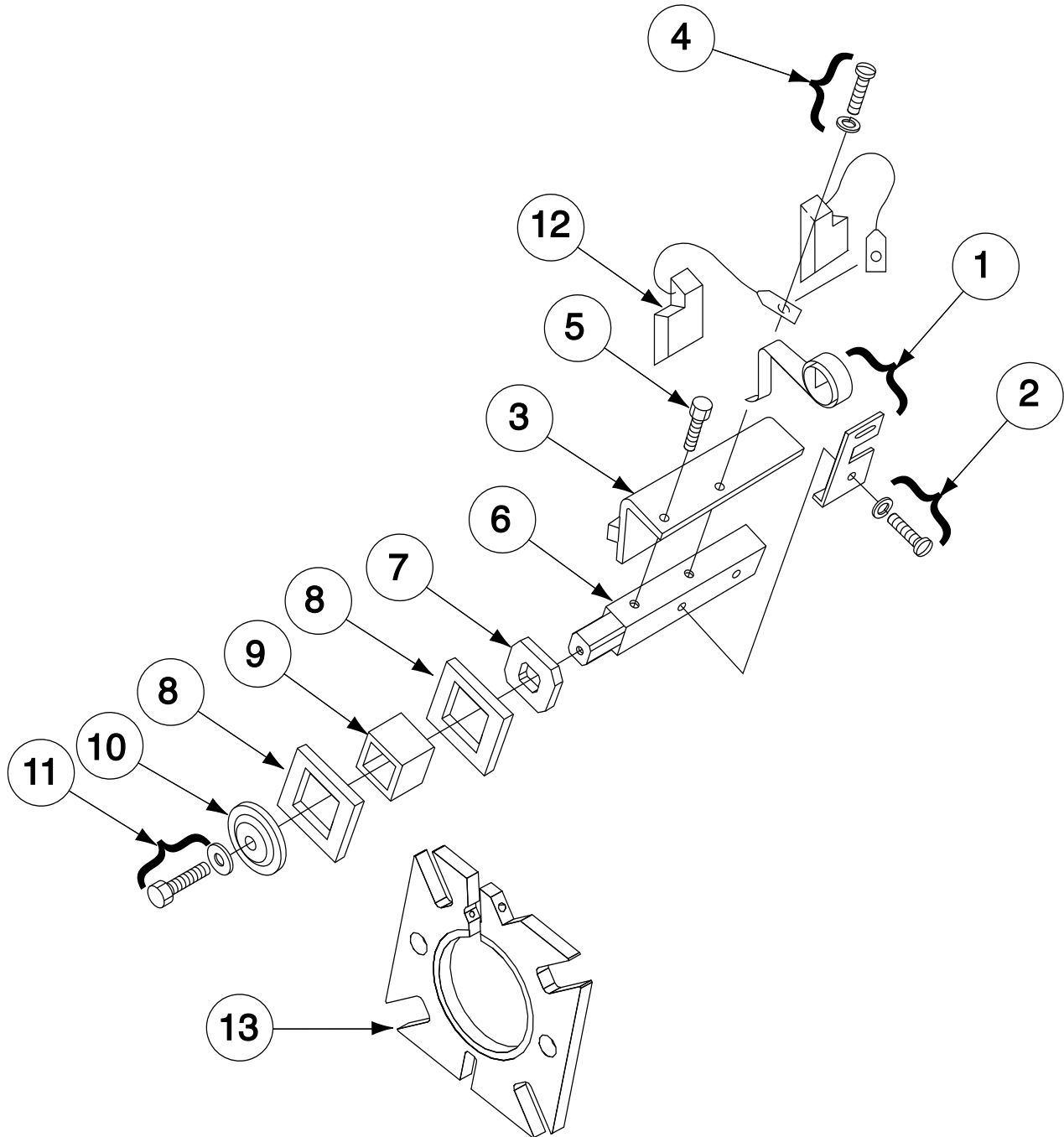


Indicates a change this printing.

Use only the parts marked "x" in the column under the heading number called for in the model index page.

ITEM	DESCRIPTION	PART NO.	QTY.	1	2	3	4	5	6	7	8	9
1	Alternator Brush Holder Assembly, Includes: Brush Holder Cartridge	M16158 G2114	1 1	X X								
2	Brush Assembly Retainer	M16157	1	X								
3	Brush Assembly	S19480	2	X								
4	Brush Holder Bracket (Not Shown)	M19896	1	X								

Generator Brush Holder



Indicates a change this printing.

Use only the parts marked "x" in the column under the heading number called for in the model index page.

ITEM	DESCRIPTION	PART NO.	QTY.	1	2	3	4	5	6	7	8	9
1	Rocker & Brush Holder Assembly	S13247-54	1	X								
2	Spring & Clip Assembly	T8495	2	X								
2	5/16-18 x .75 HHCS	CF000040	2	X								
3	Plate and Retainer Assembly	M6304-2B	1	X								
4	5/16-18 x .75 HHCS	CF000040	1	X								
5	5/16-18 x .625 HHCS	CF000106	1	X								
6	Stud	M6963-4	1	X								
7	Clamping Washer	T9020	1	X								
8	Insulating Washer	T4479	2	X								
9	Insulating Tube	S13721-1	1	X								
10	Clamping Washer	T2414	1	X								
11	3/8-16 x 1.00 HHCS	CF000019	1	X								
11	Lock Washer	E106A-16	1	X								
12	Generator Brush	T2687	8	X								
13	Rocker Assembly, Includes:	S16986-1	1	X								
	Rocker	M9857-1	1	X								
	Lock Washer (Not Shown)	E106A-2	1	X								
	1/4-20 x 2.00 HHCS (Not Shown)	T8833-22	1	X								

LECO/RDA PARTS NUMBER CROSS REFERENCE LIST

Indicates a change this printing.

PAGE NO.	ITEM	DESCRIPTION	LINCOLN PART NO.	RED-D-ARC PART NO.
P-485-B	xx	Air Filter (CODE NO. 10956, 11214 & 11488)	M19618-43	5106200
P-485-B	xx	Air Filter Intake Hose Clamp	M19618-51	3135118112
P-485-B	xx	Muffler	M19618-64	5180062
P-485-B	xx	Muffler Gasket	M19618-63	1537112370
P-485-B	xx	Fuel Solenoid (Code No. 10956 & 11214)	M19618-6	4950030
P-485-B	xx	Fuel Solenoid (Code No. C1/056/10156, 10567, 10636)	M19618-6	4950030
P-485-B	xx	Fuel Solenoid Bracket (Code No. C1/056/10156, 10567, 10636)	M19618-7	5630010
P-485-B	xx	Fuel Filter Assembly (Includes Filter)	M19618-13	1907743010
P-485-C.1	6A	(#) Nameplate (Code No. 10956 & 11214)	M19618-73	5701134
P-485-C.1	6A	Upper Nameplate (Code 11488)	M19618-84	5701136
P-485-C.1	6A	Lower Nameplate (Code 11488)	M19618-77	5701137
P-485-C.1	12	Starter Switch	M19618-49	3221033220
P-485-C.2	19	Temperature Gauge (Codes 11214 & Below)	M19618-36	4950016
P-485-C.2	20	Extension Nut (Murphy) (Codes 11214 & Below)	M19618-37	6420568
P-485-D.1	1	Radiator	M19618-35	1985972060
P-485-D.1	1	Radiator w/Fan Shroud (V1903)	M19618-83	KRDA-03
P-485-D.1	1	Radiator w/Fan Shroud (V2003)	M19618-82	KRDA-03M
P-485-D.1	4A	Top Radiator Hose	M19618-54	1547172941
P-485-D.1	4B	Radiator Hose Clamp	M19618-55	1510872873
P-485-D.1	4C	Bottom Radiator Hose	M19618-58	1547172851
P-485-F.1	3A	Positive Battery Cable (Codes 10636 & Below)	M19618-32	4901129
P-485-F.1	4	Negative Battery Cable (Codes 10636 & Below)	M19618-33	4901136
P-485-F.1	4B	Negative Battery Cable Jumper (Codes 10636 & Below)	M19618-65	4901163

(#) - SPECIFY UPPER OR LOWER NAMEPLATE WHEN ORDERING.

PART NUMBERS LISTED ARE CURRENTLY IN USE.

* RED-D-ARC PART NO. TO BE ORDERED FROM RED-D-ARC PARTS DEPARTMENT.